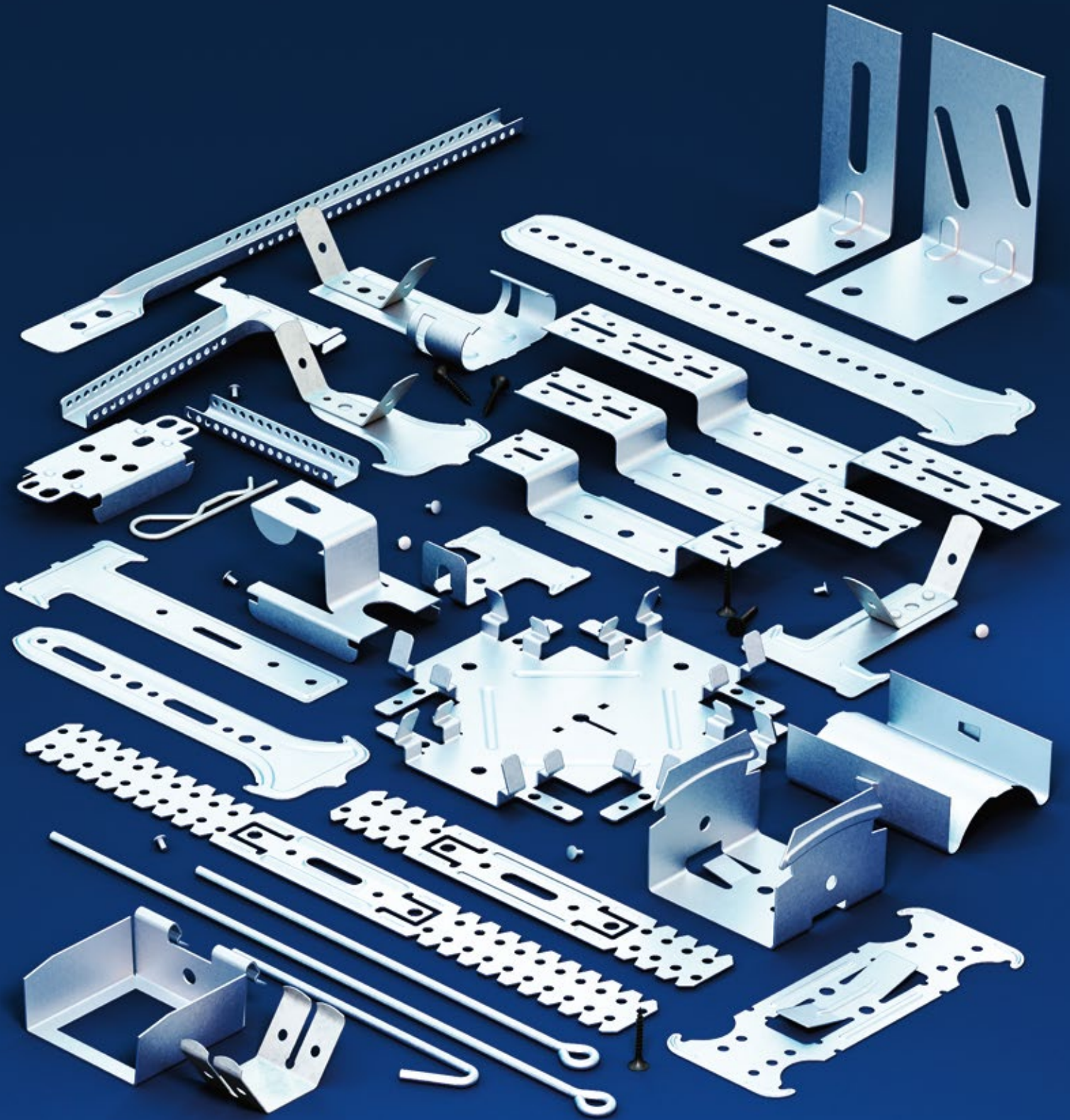




**DRYWALL
ACCESSORIES
PRODUCTION**





HISTORY

TAMADEx was founded in 1990 as a physical company (consortium), dealing in metal, especially pressing works with cooperation for the Czech and foreign partners. Since 1994, the company extended its production with a new range of metallic elements for drywall systems. In 2000, a company TAMADEx spol. s r.o. was established, which followed the physical activity of TAMADEx firm.



PRODUCTION

The company deals mainly with the manufacturing of metal connection parts and inspection doors for drywall systems. Another focus is product assembly, cold stamping and finally the production of bending and cutting tools in the tool-making workshop.



EXPORT

TAMADEx is traditional Czech manufacturer and supplier however we also export to European countries.

Spain / France / Belgium / Netherlands / Germany / Switzerland / Italy / Austria / Finland / Estonia / Latvia / Lithuania / Poland / Slovakia / Hungary / Romania / Bosnia and Herzegovina / Slovenia / Serbia / Greece



SERVICES

Fast deliveries of goods, production of atypical size inspection doors and metal construction elements, technical support and individual approach to each of our customer is very important for the company. To our foreign partners we also offer neutral packaging and custom labeling as required.

**SUSPENSION
ELEMENTS**

3-28

**SANITARY
SUPPORTS**

29-32

DOWELS

33-37

SCREWS

39-42

BINDERS

43-44

TAPES

45-48

LATHS

49-52

INSULATION

52-60



KEY PROPERTIES OF METAL ELEMENTS



The element is used for installation of profile in given width.



The element is used for installation into drywall steel profile CD with dimensions of 60x27 mm.



The element is used for installation into drywall steel profile PC with dimensions of 60x27 mm.



The element is used for installation into drywall steel profile RG with dimensions of 45x18 mm.



The element is used for installation into drywall steel profile BA (bordo arrotondato) with dimensions of 50x15 mm.



The element is used for installation into drywall steel profile BA (bordo arrotondato) with dimensions of 50x27 mm.



The element is used for installation into drywall steel profile BS (bordo schiacciato) with dimensions of 50x15 mm.



The element is used for installation into drywall steel profile BS (bordo schiacciato) with dimensions of 50x27 mm.



The element is used for installation of drywall steel profile UA.



The element is used for installation into drywall steel profile Tragprofil with dimensions of 40x28 mm.



The element is part of the suspension system nonius.



The element is used for wooden structure installation.



The element is used in constructions where reduction of structural noise and vibration is required.



The element is used for installation onto a steel beam with shape „I“ or „H“.



The element is used in constructions where fire resistance is required.



The element is used for installation of cassette ceiling construction.



The element is used in constructions where higher load is required.



The element is part of the wire suspension system.

- Selected products and other non-standard dimensions are available only on demand and it is not possible to return it.

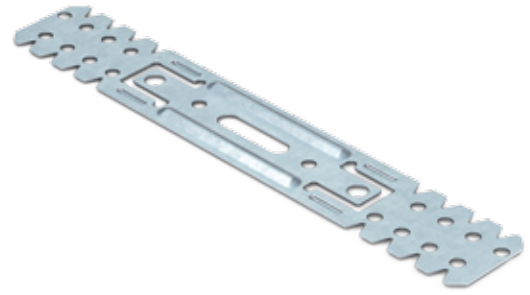
Real weight may vary in range of +/-5% according to ČSN EN10143.



**SUSPENSION
ELEMENTS**

PROFILE BRACKET

The profile bracket is used as a mounting element for direct anchoring of the steel drywall profiles into a vertical, horizontal or sloping construction of the building. It is produced by compression molding from rolled galvanized steel sheet with thickness of 0.80 mm or 1.00 mm. The company is producing the direct hangers for profiles in the various widths and lengths to ensure the high variability of use.



45

Order no.	Product no.	Article name	Thickness	Load	Packing	Weight	Pallet	Bar code
TMD-0206	1.348201 T	Profile bracket 45/075	1.00 mm	0,50 kN	100 pcs	3,75 kg	16 800 pcs	8595136503522
TMD-0203	1.348200 T	Profile bracket 45/130	1.00 mm	0,50 kN	100 pcs	5,70 kg	10 500 pcs	8595136503539

50



Order no.	Product no.	Article name	Thickness	Load	Packing	Weight	Pallet	Bar code
TMD-3410	TMD-3410	Profile bracket 50/055	0,80 mm	0,40 kN	100 pcs	2,90 kg	16 800 pcs	8595136503492
TMD-4691	TMD-4691	Profile bracket 50/125	0.80 mm	0,40 kN	100 pcs	4,28 kg	10 500 pcs	8595136502846
TMD-4692	TMD-4692	Profile bracket 50/125	1.00 mm	0,50 kN	100 pcs	5,22 kg	10 500 pcs	8595136503508
TMD-0201	1.348169 T	Wood bracket 50/125	1.00 mm	0,50 kN	100 pcs	5,61 kg	10 500 pcs	8595136503546

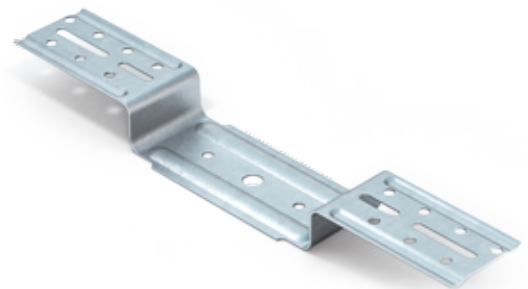
60

Order no.	Product no.	Article name	Thickness	Load	Packing	Weight	Pallet	Bar code
TMD-0115	1.348102 T	Profile bracket 60/055	0.80 mm	0,40 kN	100 pcs	2,89 kg	16 800 pcs	8595136500064
TMD-4355	1.348102.1 T	Profile bracket 60/055	1.00 mm	0,50 kN	100 pcs	3,61 kg	16 800 pcs	8595136503515
TMD-4413	1.348102,75 T	Profile bracket 60/075	0.80 mm	0,40 kN	100 pcs	3,34 kg	10 500 pcs	8595136502631
TMD-3939	1.348102,71 T	Profile bracket 60/075	1.00 mm	0,50 kN	100 pcs	4,18 kg	10 500 pcs	8595136502600
TMD-0113	1.348100 T	Profile bracket 60/125	0.80 mm	0,40 kN	100 pcs	4,46 kg	10 500 pcs	8595136500293
TMD-0114	1.348101 T	Profile bracket 60/125	1.00 mm	0,50 kN	100 pcs	5,57 kg	10 500 pcs	8595136500057
TMD-4619	1.348101.208 T	Profile bracket 60/200	0.80 mm	0,40 kN	100 pcs	6,60 kg	6 600 pcs	8595136503188
TMD-3825	1.348101.200 T	Profile bracket 60/200	1.00 mm	0,50 kN	100 pcs	8,25 kg	6 600 pcs	8595136501832
TMD-3846	1.348101.250 T	Profile bracket 60/250	1.00 mm	0,50 kN	50 pcs	5,03 kg	-	8595136502204
TMD-3860	1.348101.300 T	Profile bracket 60/300	1.00 mm	0,50 kN	50 pcs	5,92 kg	-	8595136502211
• TMD-3885	1.348101.350 T	Profile bracket 60/350	1.00 mm	0,50 kN	50 pcs	6,80 kg	-	8595136502310
• TMD-3879	1.348101.400 T	Profile bracket 60/400	1.00 mm	0,50 kN	50 pcs	7,69 kg	-	8595136502280

• Atypical length production possible

ADJUSTING ROCKER BAR

Similarly to the profile bracket also the adjusting rocker bar is used for direct mounting of drywall steel profiles into vertical, horizontal or sloping structure of the building. The element is produced by compression molding from rolled galvanized steel sheet with thickness of 0.80 mm or 1.00 mm and many different length variations. The hanger is produced with circle and oval openings which are used for anchoring into the building structure and mounting the metal profiles using self-drilling screws. A main difference in comparison with profile bracket is pressed bend which gives to the hanger acoustic properties and higher loading. It is mostly used in the rooms where the high fire resistance is needed.

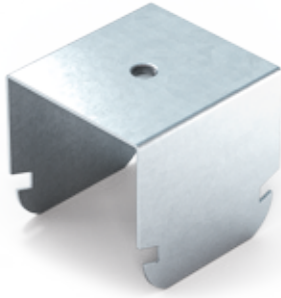


60



Order no.	Product no.	Article name	Thickness	Load	Packing	Weight	Pallet	Bar code
TMD-0116	1.348103 T	Adjusting rocker bar 60/035	0.80 mm	0,60 kN	100 pcs	3,19 kg	10 800 pcs	8595136500019
TMD-0117	1.348104 T	Adjusting rocker bar 60/065	0.80 mm	0,60 kN	100 pcs	4,10 kg	6 400 pcs	8595136500026
TMD-0118	1.348105 T	Adjusting rocker bar 60/095	0.80 mm	0,60 kN	100 pcs	5,02 kg	6 400 pcs	8595136500033
TMD-3251	1.348105.120	Adjusting rocker bar 60/120	1.00 mm	0,60 kN	100 pcs	7,54 kg	6 000 pcs	8595136501849
TMD-0119	1.348105.150	Adjusting rocker bar 60/150	1.00 mm	0,60 kN	100 pcs	8,95 kg	6 000 pcs	8595136501856
TMD-0947	1.348105.170	Adjusting rocker bar 60/170	1.00 mm	0,60 kN	25 pcs	2,45 kg	-	8595136501863
TMD-3399	1.348105.200	Adjusting rocker bar 60/200	1.00 mm	0,60 kN	25 pcs	2,80 kg	-	8595136501870
TMD-3610	1.348105.250	Adjusting rocker bar 60/250	1.00 mm	0,60 kN	25 pcs	3,25 kg	-	8595136501887
• TMD-3432	1.348105.300	Adjusting rocker bar 60/300	1.00 mm	0,60 kN	25 pcs	3,75 kg	-	8595136501894
• TMD-3611	1.348105.350	Adjusting rocker bar 60/350	1.00 mm	0,60 kN	25 pcs	4,60 kg	-	8595136501900
• TMD-3612	1.348105.400	Adjusting rocker bar 60/400	1.00 mm	0,60 kN	25 pcs	4,80 kg	-	8595136501917
• TMD-3613	1.348105.450	Adjusting rocker bar 60/450	1.00 mm	0,60 kN	25 pcs	5,70 kg	-	8595136501924
• TMD-3614	1.348105.500	Adjusting rocker bar 60/500	1.00 mm	0,60 kN	25 pcs	6,05 kg	-	8595136501931

CROSS CONNECTOR BA / BS



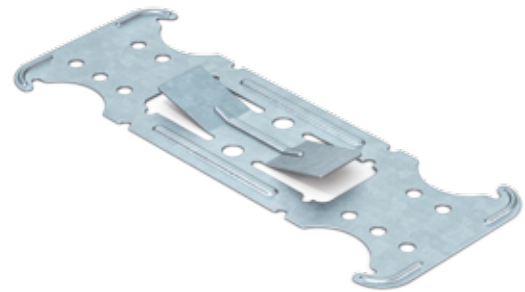
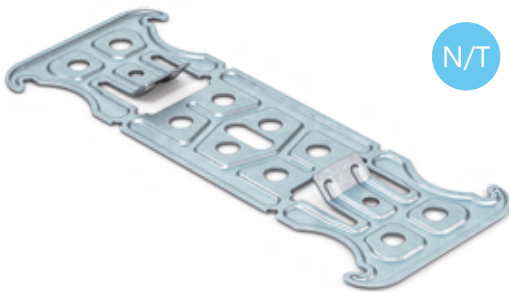
The cross connector is used for mounting the double cross grid created from drywall steel profiles BA 50 or BS 50. It is produced by compression molding of the rolled galvanized steel sheet with a thickness of 1.00 mm in variant with a hole of 6 mm or a thread M6. To simplify the work it is supplied already bent state and it is secured by snapping into the profile.



Order no.	Product no.	Article name	Thickness	Load	Packing	Weight	Pallet	Bar code
TMD-4439	1.348213D BA50	Cross connector BA 50/27	1.00 mm	0,80 kN	100 pcs	4,64 kg	10 800 pcs	8595136503638
TMD-4441	1.348213M BA50	Cross connector BA 50/27 (thread M6)	1.00 mm	0,80 kN	100 pcs	4,64 kg	10 800 pcs	8595136503645
TMD-4440	1.348213D BS50	Cross connector BS 50/27	1.00 mm	0,80 kN	100 pcs	4,64 kg	10 800 pcs	8595136503676
TMD-4442	1.348213M BS50	Cross connector BS 50/27 (thread M6)	1.00 mm	0,80 kN	100 pcs	4,64 kg	10 800 pcs	8595136503683

CROSS CONNECTOR CD STRAIGHT

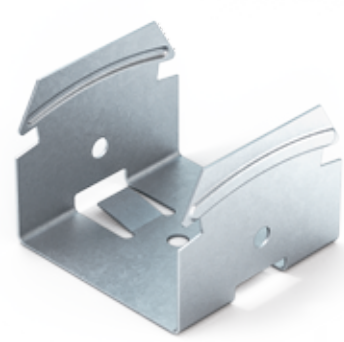
The cross connector is used for mounting the double cross grid created from drywall steel profiles CD 60. It is produced by compression molding of the rolled galvanized steel sheet with a thickness of 0.80 mm. The bracket is provided with elements to define position between the connected profiles. To simplify the manipulation and packaging, it is supplied in a straight state and it is bent during mounting.



Order no.	Product no.	Article name	Thickness	Load	Packing	Weight	Pallet	Bar code
TMD-0142	1.348120 T	Cross connector CD 60/27 - straight	0.80 mm	0,33 kN	100 pcs	3,32 kg	20 000 pcs	8595136500088
TMD-3973	1.348120 N/T	Cross connector CD 60/27 - straight (N/T)	0.80 mm	0,40 kN	100 pcs	3,47 kg	20 000 pcs	8595136502549

CROSS CONNECTOR CD BENDED

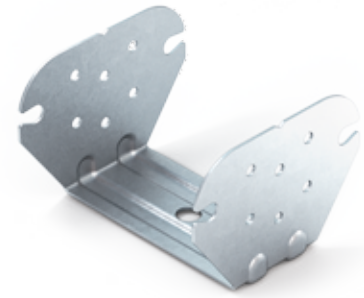
The cross connector is used for mounting the double cross grid created from drywall steel profiles CD 60. It is produced by compression molding of the rolled, galvanized steel sheet with a thickness of 0.80 mm. The bracket is provided with elements to define position between the connected profiles. To simplify the work it is supplied already bended and it is secured by snapping into the profile.



Order no.	Product no.	Article name	Thickness	Load	Packing	Weight	Pallet	Bar code
TMD-0143	1.348121 T	Cross connector CD 60/27- bended	0.80 mm	0,40 kN	100 pcs	4,88 kg	10 800 pcs	8595136500071
TMD-3974	1.348121 N/T	Cross connector CD 60/27- bended (N/T)	0.80 mm	0,40 kN	100 pcs	4,85 kg	10 800 pcs	8595136502532

CROSS CONNECTOR PC

The cross connector is used for mounting the double cross grid created from drywall steel profiles PC 60. It is produced by compression molding of the rolled, galvanized steel sheet with a thickness of 1.00 mm. To simplify the work it is supplied already bended and secured by snapping into the profile.

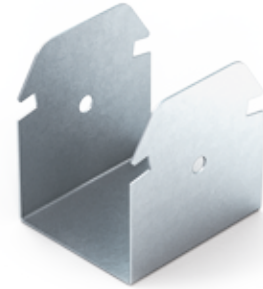


PC60

Order no.	Product no.	Article name	Thickness	Load	Packing	Weight	Pallet	Bar code
TMD-3907	1.348184 T	Cross connector PC 60/27 - bended	1.00 mm	0,50 kN	100 pcs	4,33 kg	6 400 pcs	8595136503690

CROSS CONNECTOR CD / UA

The cross connector is used for mounting the double cross grid created from drywall steel profiles CD 60 and UA 50. It is produced by compression molding of the rolled galvanized steel sheet with a thickness of 1.00 mm. To simplify the work it is supplied already bended and secured by snapping into the profile.

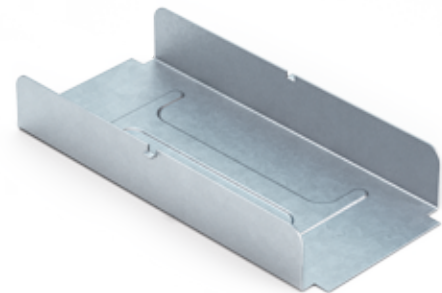


UA50 CD60

Order no.	Product no.	Article name	Thickness	Load	Packing	Weight	Pallet	Bar code
TMD-0199	1.348167.1 T	Cross connector CD/UA50 - bended	1.00 mm	0,40 kN	50 pcs	3,75 kg	3 000 pcs	8595136501245

SECTION CONNECTOR RG

The section connector is used to connect two drywall steel profiles RG 45 which allows extending the structure grid. It is produced by compression molding of the rolled galvanized steel sheet with a thickness of 0.55 mm. The connector does not serve as supporting element and the strength of construction is achieved after a board mounting.

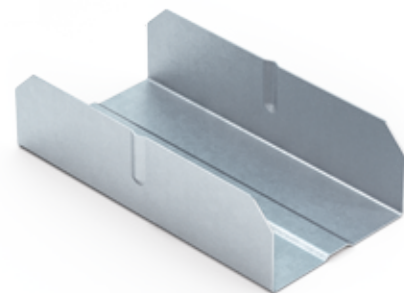
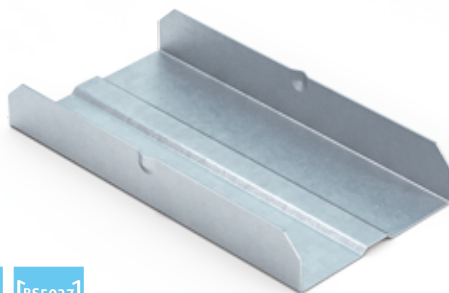


RG45

Order no.	Product no.	Article name	Thickness	Lenght	Packing	Weight	Pallet	Bar code
TMD-0211	1.348206 T	Section connector RG 45/18 - 100 mm	0.55 mm	100 mm	100 pcs	2,80 kg	8 400 pcs	8595136503706

SECTION CONNECTOR BA / BS

The section connector is used to connect two drywall steel profiles BA/BS 50 which allows extending the structure grid. It is produced by compression molding of the rolled, galvanized steel sheet with a thickness of 0.55 mm for profile height of 27 mm or 15 mm. The connector does not serve as supporting element and the strength of construction is achieved after a board mounting.



BA5015 BA5027 BS5015 BS5027

Order no.	Product no.	Article name	Thickness	Lenght	Packing	Weight	Pallet	Bar code
TMD-4447	1.348215 5015	Section connector BA-BS 50/15 - 090 mm	0.55 mm	90 mm	100 pcs	2,85 kg	10 800 pcs	8595136503713
TMD-4448	1.348215 5027	Section connector BA-BS 50/27 - 090 mm	0.55 mm	90 mm	100 pcs	3,80 kg	10 800 pcs	8595136503720

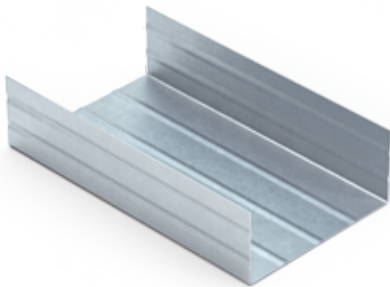
SECTION CONNECTOR CD

The section connector is used to connect two drywall steel profiles CD 60 which allows extending the structure grid. It is produced by compression molding of the rolled galvanized steel sheet with a thickness of 0.55 mm in different models. The connector does not serve as supporting element and the strength of construction is achieved after a board mounting.



Order no.	Product no.	Article name	Thickness	Length	Packing	Weight	Pallet	Bar code
TMD-0145	1.348122.1 T	Section connector CD 60/27 - 080 mm	0.55 mm	80 mm	100 pcs	3,75 kg	8 400 pcs	8595136501238
TMD-0146	1.348123 T	Section connector CD 60/27 - arch	0.55 mm	80 mm	100 pcs	3,99 kg	8 400 pcs	8595136500477
TMD-0144	1.348122 T	Section connector CD 60/27 - 100 mm	0.55 mm	100 mm	100 pcs	4,37 kg	8 400 pcs	8595136500118

SECTION CONNECTOR PC

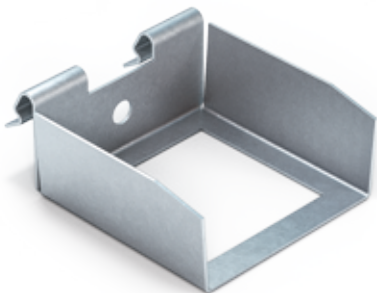


The section connector is used to connect two drywall steel profiles PC 60 which allows extending the structure grid. It is produced by compression molding of the rolled galvanized steel sheet with a thickness of 0.55 mm. The connector does not serve as supporting element and the strength of construction is achieved after a board mounting.



Order no.	Product no.	Article name	Thickness	Length	Packing	Weight	Pallet	Bar code
TMD-3908	1.348185 T	Section connector PC 60/27 - 100 mm	0.55 mm	100 mm	100 pcs	4,52 kg	8 400 pcs	8595136503737

LEVEL CONNECTOR CD

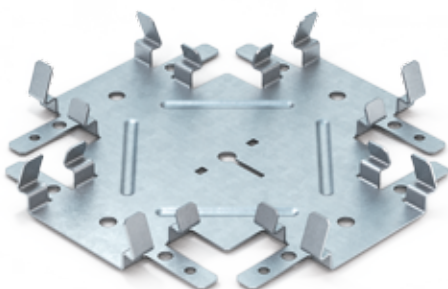


The level connector is used for mounting single cross grid created from drywall steel profiles CD 60. It is produced by compression molding of the rolled, galvanized steel sheet with a thickness of 1.00 mm. The connector does not serve as supporting element and can be used for T or cross connection.



Order no.	Product no.	Article name	Thickness	Packing	Weight	Pallet	Bar code
TMD-2358	1.348125 TV	Level connector CD 60/27	1.00 mm	100 pcs	5,27 kg	6 000 pcs	8595136500286

LEVEL CONNECTOR CD FOUR-POINT



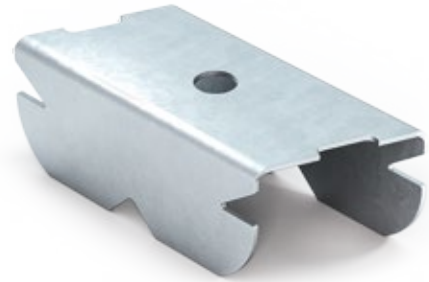
The level connector is used for mounting single cross grid created from drywall steel profiles CD 60. It is produced by compression molding of the rolled, galvanized steel sheet with a thickness of 1.00 mm. The connector does not serve as supporting element and can be used for cross connection only.



Order no.	Product no.	Article name	Thickness	Packing	Weight	Pallet	Bar code
TMD-0149-Z	1.348125.1 T	Level connector CD 60/27 - four-point	1.00 mm	24 pcs	3,36 kg	2 400 pcs	8595136501481

DIRECT HANGER RG

The hanger is used for low direct mounting of drywall steel profiles RG 45 into a vertical, horizontal or sloping construction of the building. It is produced by compression molding from rolled, galvanized steel sheet with thickness of 1.00 mm in variant with a hole of 6 mm or a thread M6. Locking into the profile is done by rotating the hanger.

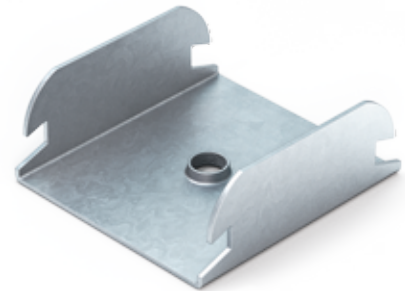


RG45

Order no.	Product no.	Article name	Thickness	Load	Packing	Weight	Pallet	Bar Code
TMD-4266	TMD-4266	Direct hanger RG 45/18	1.00 mm	0,40 kN	100 pcs	2,25 kg	19 800 pcs	8595136504758
TMD-0213	TMD-0213	Direct hanger RG 45/18 (thread M6)	1.00 mm	0,40 kN	100 pcs	2,25 kg	19 800 pcs	8595136504765

DIRECT HANGER BA / BS

The hanger is used for low direct mounting of drywall steel profiles BA 50 or BS 50 into a vertical horizontal or sloping construction of the building. It is produced by compression molding from rolled, galvanized steel sheet with thickness of 1.00 mm in variant with a hole of 6 mm or a thread M6. Locking into the profile is done by snapping.

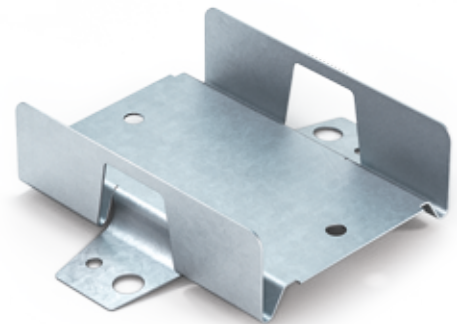


BA5015 BA5027 BS5015 BS5027

Order no.	Product no.	Article name	Thickness	Load	Packing	Weight	Pallet	Bar Code
TMD-4443	1.348214D BA50	Direct hanger BA 50/15	1.00 mm	0,20 kN	100 pcs	2,50 kg	19 800 pcs	8595136503614
TMD-4445	1.348214M BA50	Direct hanger BA 50/15 (thread M6)	1.00 mm	0,20 kN	100 pcs	2,52 kg	19 800 pcs	8595136503621
TMD-4444	1.348214D BS50	Direct hanger BS 50/15	1.00 mm	0,20 kN	100 pcs	2,50 kg	19 800 pcs	8595136503652
TMD-4446	1.348214M BS50	Direct hanger BS 50/15 (thread M6)	1.00 mm	0,20 kN	100 pcs	2,52 kg	19 800 pcs	8595136503669

DIRECT HANGER CD

The hanger is used for low direct mounting of drywall steel profiles CD 60 into a vertical, horizontal or sloping construction of the building. It is produced by compression molding from rolled, galvanized steel sheet with thickness of 0.60 mm. Locking into the profile is done by sliding and can be also used as a connector.

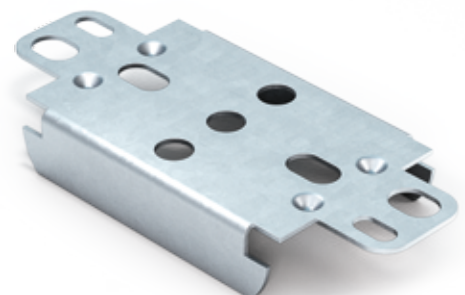


CD60

Order no.	Product no.	Article name	Thickness	Length	Load	Packing	Weight	Pallet	Bar code
TMD-0147-Z	1.348124 T	Direct hanger CD 60/27	0.60 mm	80 mm	0,25 kN	100 pcs	3,80 kg	5 000 pcs	8595136500279

DIRECT HANGER CD KLIKK FIX

The hanger is used for low direct mounting of drywall steel profiles CD 60 into a vertical, horizontal or sloping construction of the building. It is produced by compression molding from rolled, galvanized steel sheet with thickness of 1.00 mm. Locking into the profile is done by snapping.



CD60

Order no.	Product no.	Article name	Thickness	Load	Packing	Weight	Pallet	Bar code
TMD-4755	TMD-4755	Direct hanger CD 60/27 - Klick fix	1.00 mm	0,50 kN	100 pcs	2,85 kg	16 200 pcs	8595136502879

SUSPENSION WIRE PLAIN



The element is made of galvanized steel wire with diameter of 4.00 mm. It is used for extended suspension of the steel drywall or main profile structures into solid construction of the building. Quick hanger or butterfly spring can be mounted on the straight end of the wire.

- Atypical length production possible



Order no.	Product no.	Article name	Diameter	Load	Packing	Weight	Pallet	Bar code
TMD-5067	TMD-5067	Suspension wire plain - 1000 mm	4.00 mm	0,40 kN	100 pcs	9,80 kg	10 000 pcs	8595136504826
TMD-5066	TMD-5066	Suspension wire plain - 1500 mm	4.00 mm	0,40 kN	100 pcs	14,70 kg	5 000 pcs	8595136504833
TMD-4999	TMD-4999	Suspension wire plain - 2000 mm	4.00 mm	0,40 kN	100 pcs	19,60 kg	5 000 pcs	8595136504062
TMD-4711	TMD-4711	Suspension wire plain - 2500 mm	4.00 mm	0,40 kN	100 pcs	24,50 kg	4 000 pcs	8595136504079
TMD-3634	TMD-3634	Suspension wire plain - 3000 mm	4.00 mm	0,40 kN	100 pcs	29,40 kg	3 000 pcs	8595136504086

SUSPENSION WIRE WITH HOOK



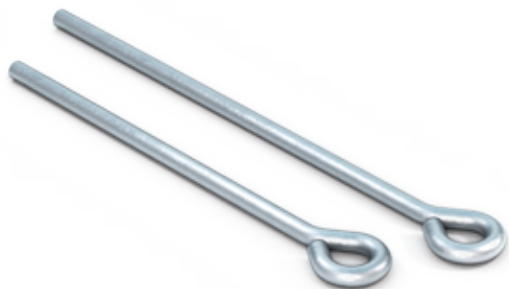
The element is made of galvanized steel wire with diameter of 4.00 mm. It is used for suspension of the steel drywall or main profile structures into solid construction of the building. The hook forms one side of the wire and is used for anchoring into hanger peg or attaching the cassette profile. The straight end of suspension wire can be used for sliding in the butterfly double clip or spring hanger brackets.

- Atypical length production possible



Order no.	Product no.	Article name	Diameter	Load	Packing	Weight	Pallet	Bar code
TMD-2927	1.348139 T	Suspension wire with hook - 0125 mm	4.00 mm	0,50 kN	100 pcs	1,42 kg	30 000 pcs	8595136500514
TMD-1274	1.348140 T	Suspension wire with hook - 0250 mm	4.00 mm	0,50 kN	100 pcs	2,58 kg	20 000 pcs	8595136500521
TMD-2824	1.348141 T	Suspension wire with hook - 0375 mm	4.00 mm	0,50 kN	100 pcs	3,75 kg	14 000 pcs	8595136500538
TMD-2831	1.348142 T	Suspension wire with hook - 0500 mm	4.00 mm	0,50 kN	100 pcs	4,91 kg	10 000 pcs	8595136500545
TMD-2905	1.348143 T	Suspension wire with hook - 0750 mm	4.00 mm	0,50 kN	100 pcs	7,23 kg	10 000 pcs	8595136500552
TMD-2988	1.348144 T	Suspension wire with hook - 1000 mm	4.00 mm	0,50 kN	100 pcs	9,58 kg	10 000 pcs	8595136500569
TMD-3012	1.348145 T	Suspension wire with hook - 1200 mm	4.00 mm	0,50 kN	100 pcs	11,42 kg	5 000 pcs	8595136500576
TMD-2938	1.348146 T	Suspension wire with hook - 1500 mm	4.00 mm	0,50 kN	100 pcs	14,22 kg	5 000 pcs	8595136500583
TMD-3044	1.348147 T	Suspension wire with hook - 2000 mm	4.00 mm	0,50 kN	100 pcs	18,87 kg	5 000 pcs	8595136500590
TMD-0926	TMD-0926	Suspension wire with hook - 2500 mm	4.00 mm	0,50 kN	100 pcs	23,53 kg	4 000 pcs	8595136504802
TMD-2218	TMD-2218	Suspension wire with hook - 3000 mm	4.00 mm	0,50 kN	100 pcs	28,18 kg	3 000 pcs	8595136502853

SUSPENSION WIRE WITH EYELET 6 MM



The element is made of galvanized steel wire with diameter of 4.00 mm. It is used for suspension of the steel drywall or main profile structures into solid construction of the building. The eyelet with diameter 6.0 mm forms one side of the wire and is used for anchoring into the ceiling. The straight end of suspension wire can be used for sliding in the butterfly double clip or spring hanger brackets.

- Atypical length production possible

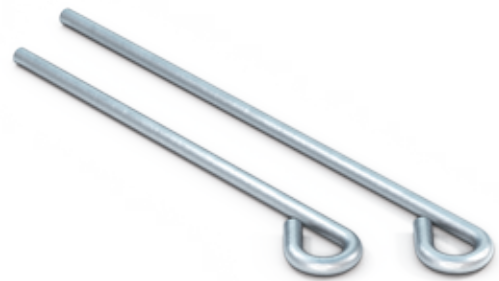


Order no.	Product no.	Article name	Diameter	Load	Packing	Weight	Pallet	Bar code
TMD-0159	1.348130 T	Suspension wire with eyelet - 0125 mm	4.00 mm	0,50 kN	100 pcs	1,35 kg	50 000 pcs	8595136500149
TMD-0160	1.348131 T	Suspension wire with eyelet - 0250 mm	4.00 mm	0,50 kN	100 pcs	2,52 kg	20 000 pcs	8595136500156
TMD-0161	1.348132 T	Suspension wire with eyelet - 0375 mm	4.00 mm	0,50 kN	100 pcs	3,68 kg	20 000 pcs	8595136500163
TMD-0162	1.348133 T	Suspension wire with eyelet - 0500 mm	4.00 mm	0,50 kN	100 pcs	4,85 kg	10 000 pcs	8595136500170
TMD-0163	1.348134 T	Suspension wire with eyelet - 0750 mm	4.00 mm	0,50 kN	100 pcs	7,18 kg	10 000 pcs	8595136500187
TMD-0164	1.348135 T	Suspension wire with eyelet - 1000 mm	4.00 mm	0,50 kN	100 pcs	9,50 kg	10 000 pcs	8595136500194
TMD-0165	1.348136 T	Suspension wire with eyelet - 1200 mm	4.00 mm	0,50 kN	100 pcs	11,36 kg	5 000 pcs	8595136500484
TMD-0166	1.348137 T	Suspension wire with eyelet - 1500 mm	4.00 mm	0,50 kN	100 pcs	14,16 kg	5 000 pcs	8595136500491
TMD-0167	1.348138 T	Suspension wire with eyelet - 2000 mm	4.00 mm	0,50 kN	100 pcs	18,81 kg	5 000 pcs	8595136500507
TMD-0853	TMD-0853	Suspension wire with eyelet - 2500 mm	4.00 mm	0,50 kN	100 pcs	23,47 kg	4 000 pcs	8595136503744
TMD-0852	TMD-0852	Suspension wire with eyelet - 3000 mm	4.00 mm	0,50 kN	100 pcs	28,12 kg	3 000 pcs	8595136503751

SUSPENSION WIRE WITH EYELET 8 MM

The element is made of galvanized steel wire with diameter of 4.00 mm. It is used for suspension of the steel drywall or main profile structures into solid construction of the building. The eyelet with diameter 8.0 mm forms one side of the wire and is used for anchoring into the ceiling. The straight end of suspension wire can be used for sliding in the butterfly double clip or spring hanger brackets.

- Atypical length production possible

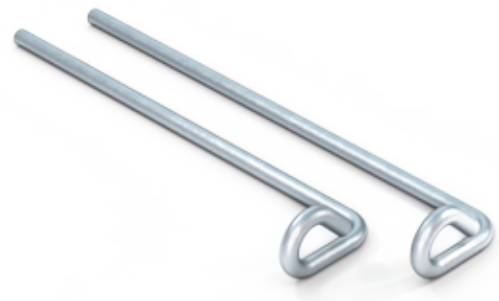


Order no.	Product no.	Article name	Diameter	Load	Packing	Weight	Pallet	Bar code
TMD-4394	TMD-4394	Suspension wire with eyelet 8 mm - 0125 mm	4.00 mm	0,40 kN	100 pcs	1,38 kg	30 000 pcs	8595136503768
TMD-4701	TMD-4701	Suspension wire with eyelet 8 mm - 0250 mm	4.00 mm	0,40 kN	100 pcs	2,55 kg	20 000 pcs	8595136503775
TMD-4828	TMD-4828	Suspension wire with eyelet 8 mm - 0375 mm	4.00 mm	0,40 kN	100 pcs	3,74 kg	14 000 pcs	8595136503782
TMD-4894	TMD-4894	Suspension wire with eyelet 8 mm - 0500 mm	4.00 mm	0,40 kN	100 pcs	4,88 kg	10 000 pcs	8595136503799
TMD-4895	TMD-4895	Suspension wire with eyelet 8 mm - 0750 mm	4.00 mm	0,40 kN	100 pcs	7,20 kg	10 000 pcs	8595136503805
TMD-4775	TMD-4775	Suspension wire with eyelet 8 mm - 1000 mm	4.00 mm	0,40 kN	100 pcs	9,53 kg	10 000 pcs	8595136503812
TMD-4896	TMD-4896	Suspension wire with eyelet 8 mm - 1500 mm	4.00 mm	0,40 kN	100 pcs	14,19 kg	5 000 pcs	8595136503829
TMD-4897	TMD-4897	Suspension wire with eyelet 8 mm - 2000 mm	4.00 mm	0,40 kN	100 pcs	18,84 kg	5 000 pcs	8595136503836
TMD-4898	TMD-4898	Suspension wire with eyelet 8 mm - 2500 mm	4.00 mm	0,40 kN	100 pcs	23,49 kg	4 000 pcs	8595136503843
TMD-4899	TMD-4899	Suspension wire with eyelet 8 mm - 3000 mm	4.00 mm	0,40 kN	100 pcs	28,15 kg	3 000 pcs	8595136503850

SUSPENSION WIRE WITH BENT EYELET 8 MM

The element is made of galvanized steel wire with diameter of 4.00 mm. It is used for suspension of the steel drywall or main profile structures into solid construction of the building. The bended eyelet with diameter 8.0 mm forms one side of the wire and is used for easy anchoring into the ceiling. The straight end of suspension wire can be used for sliding in the butterfly double clip or spring hanger brackets.

- Atypical length production possible

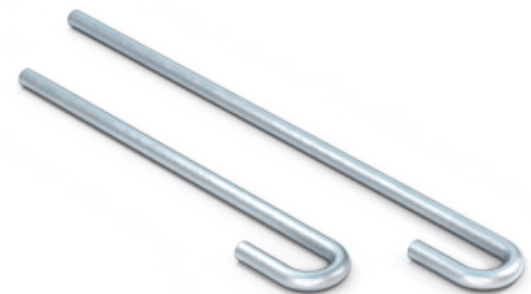


Order no.	Product no.	Article name	Diameter	Load	Packing	Weight	Bar code
TMD-4395	TMD-4395	Suspension wire with bent eyelet - 0125 mm	4.00 mm	0,40 kN	100 pcs	1,63 kg	8595136503867
TMD-4399	TMD-4399	Suspension wire with bent eyelet - 0250 mm	4.00 mm	0,40 kN	100 pcs	2,79 kg	8595136503874
TMD-4400	TMD-4400	Suspension wire with bent eyelet - 0375 mm	4.00 mm	0,40 kN	100 pcs	3,95 kg	8595136503881
TMD-4401	TMD-4401	Suspension wire with bent eyelet - 0500 mm	4.00 mm	0,40 kN	100 pcs	5,12 kg	8595136503898
TMD-4626	TMD-4626	Suspension wire with bent eyelet - 0750 mm	4.00 mm	0,40 kN	100 pcs	7,45 kg	8595136503904
TMD-4402	TMD-4402	Suspension wire with bent eyelet - 1000 mm	4.00 mm	0,40 kN	100 pcs	9,78 kg	8595136503911
TMD-4627	TMD-4627	Suspension wire with bent eyelet - 1500 mm	4.00 mm	0,40 kN	100 pcs	14,43 kg	8595136503928
TMD-4628	TMD-4628	Suspension wire with bent eyelet - 2000 mm	4.00 mm	0,40 kN	100 pcs	19,09 kg	8595136503935
TMD-4629	TMD-4629	Suspension wire with bent eyelet - 2500 mm	4.00 mm	0,40 kN	100 pcs	23,74 kg	8595136503942
TMD-4630	TMD-4630	Suspension wire with bent eyelet - 3000 mm	4.00 mm	0,40 kN	100 pcs	28,40 kg	8595136503959

SUSPENSION WIRE WITH ARCH 8 MM

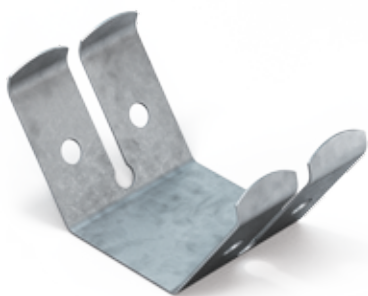
The element is made of galvanized steel wire with diameter of 4.00 mm. It is used for suspension of the steel drywall or main profile structures into solid construction of the building. The arch forms one side of the wire and is used for anchoring into hanger peg or attaching the cassette profile. The straight end of suspension wire can be used for sliding in the butterfly double clip or spring hanger brackets.

- Atypical length production possible



Order no.	Product no.	Articlename	Diameter	Load	Packing	Weight	Pallet	Bar code
TMD-4396	TMD-4396	Suspension wire with arch - 0125 mm	4.00 mm	0,40 kN	100 pcs	1,45 kg	30 000 pcs	8595136503966
TMD-4403	TMD-4403	Suspension wire with arch - 0250 mm	4.00 mm	0,40 kN	100 pcs	2,61 kg	20 000 pcs	8595136503973
TMD-4631	TMD-4631	Suspension wire with arch - 0375 mm	4.00 mm	0,40 kN	100 pcs	3,77 kg	14 000 pcs	8595136503980
TMD-4404	TMD-4404	Suspension wire with arch - 0500 mm	4.00 mm	0,40 kN	100 pcs	4,94 kg	10 000 pcs	8595136503997
TMD-4632	TMD-4632	Suspension wire with arch - 0750 mm	4.00 mm	0,40 kN	100 pcs	7,27 kg	10 000 pcs	8595136504000
TMD-4405	TMD-4405	Suspension wire with arch - 1000 mm	4.00 mm	0,40 kN	100 pcs	9,60 kg	10 000 pcs	8595136504017
TMD-4406	TMD-4406	Suspension wire with arch - 1500 mm	4.00 mm	0,40 kN	100 pcs	14,25 kg	5 000 pcs	8595136504024
TMD-4633	TMD-4633	Suspension wire with arch - 2000 mm	4.00 mm	0,40 kN	100 pcs	18,91 kg	5 000 pcs	8595136504031
TMD-4576	TMD-4576	Suspension wire with arch - 2500 mm	4.00 mm	0,40 kN	100 pcs	23,56 kg	4 000 pcs	8595136504048
TMD-4407	TMD-4407	Suspension wire with arch - 3000 mm	4.00 mm	0,40 kN	100 pcs	28,22 kg	3 000 pcs	8595136504055

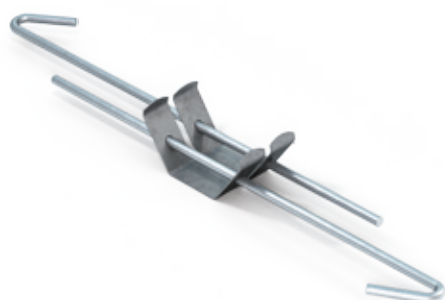
BUTTERFLY CLIP



The butterfly clip is used for connecting two suspension wires in a drywall construction. It is produced by compression molding from spring metal sheet with thickness of 0.60 mm which is covered by anticorrosive Delta Protekt surface. The element allows very simple and highly variable reduction of the ceiling.



Order no.	Product no.	Article name	Thickness	Load	Packing	Weight	Pallet	Bar code
TMD-0153-Z	1.348128 T	Butterfly clip (double spring)	0.60 mm	0,40 kN	100 pcs	1,20 kg	30 000 pcs	8595136500040



SUSPENSION SET HOOK+HOOK

The element is consisted of two galvanized steel wires with diameter of 4 mm and the butterfly clip with thickness of 0.60 mm. It is primarily used for anchoring the suspended cassette construction. The hook on the both sides of the set allows quick fixing into the building structure and insertion of the T-profile.



Order no.	Product no.	Article name	Range	Load	Packing	Weight
• TMD-3666	TMD-3666	Suspension set H/H - 0090 x 0090	80-140 mm	0,40 kN	100 pcs	3,30 kg
• TMD-3667	TMD-3667	Suspension set H/H - 0115 x 0115	100-190 mm	0,40 kN	100 pcs	3,80 kg
• TMD-3668	TMD-3668	Suspension set H/H - 0165 x 0165	150-290 mm	0,40 kN	100 pcs	4,76 kg
• TMD-5019	TMD-5019	Suspension set H/H - 0215 x 0215	200-390 mm	0,40 kN	100 pcs	4,74 kg
• TMD-3927	TMD-3927	Suspension set H/H - 0250 x 0250	235-460 mm	0,40 kN	100 pcs	6,42 kg
• TMD-3949	TMD-3949	Suspension set H/H - 0315 x 0315	300-590 mm	0,40 kN	100 pcs	7,70 kg
• TMD-3672	TMD-3672	Suspension set H/H - 0315 x 0715	700-990 mm	0,40 kN	50 pcs	5,81 kg
• TMD-3673	TMD-3673	Suspension set H/H - 0315 x 1015	1000-1290 mm	0,40 kN	50 pcs	7,28 kg
• TMD-3928	TMD-3928	Suspension set H/H - 0315 x 1215	1200-1490 mm	0,40 kN	50 pcs	8,26 kg
• TMD-3951	TMD-3951	Suspension set H/H - 0315 x 1515	1500-1790 mm	0,40 kN	50 pcs	9,73 kg
• TMD-3952	TMD-3952	Suspension set H/H - 0315 x 1715	1700-1990 mm	0,40 kN	50 pcs	10,71 kg
• TMD-3671	TMD-3671	Suspension set H/H - 0415 x 0415	400-790 mm	0,40 kN	50 pcs	4,83 kg
• TMD-3929	TMD-3929	Suspension set H/H - 0515 x 0515	500-990 mm	0,40 kN	50 pcs	5,81 kg
• TMD-3389	TMD-3389	Suspension set H/H - 0515 x 1015	1000-1490 mm	0,40 kN	50 pcs	8,26 kg
• TMD-3329	TMD-3329	Suspension set H/H - 0815 x 0815	800-1590 mm	0,40 kN	50 pcs	8,75 kg
• TMD-3953	TMD-3953	Suspension set H/H - 1015 x 1015	1000-1990 mm	0,40 kN	50 pcs	10,71 kg



SUSPENSION SET EYE + HOOK

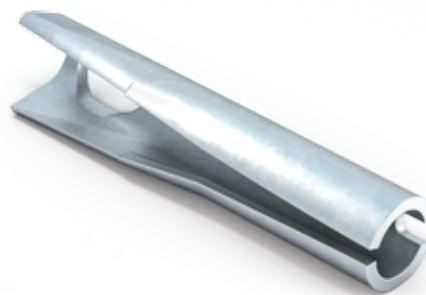
The element is consisted of two galvanized steel wires with diameter of 4 mm and the butterfly clip with thickness of 0.60 mm. It is primarily used for anchoring the suspended cassette construction. The hook and eye of the set allows quick fixing into the building structure and insertion of the T-profile.



Order no.	Product no.	Article name	Range	Load	Packing	Weight
• TMD-3151	TMD-3151	Suspension set E/H - 0165 x 0165	150-290 mm	0,40 kN	100 pcs	3,69 kg
• TMD-3778	TMD-3778	Suspension set E/H - 0215 x 0215	200-390 mm	0,40 kN	100 pcs	5,67 kg
• TMD-3350	TMD-3350	Suspension set E/H - 0315 x 0315	300-590 mm	0,40 kN	100 pcs	7,63 kg
• TMD-4066	TMD-4066	Suspension set E/H - 0415 x 0415	400-790 mm	0,40 kN	50 pcs	4,80 kg
• TMD-4067	TMD-4067	Suspension set E/H - 0415 x 0415	500-990 mm	0,40 kN	50 pcs	5,78 kg

HANGER PEG

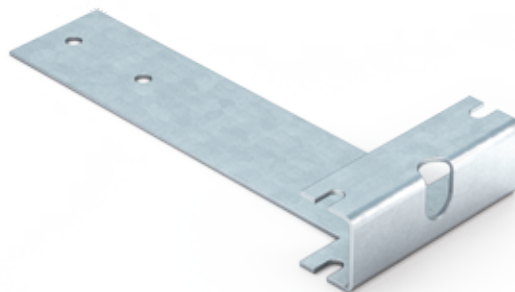
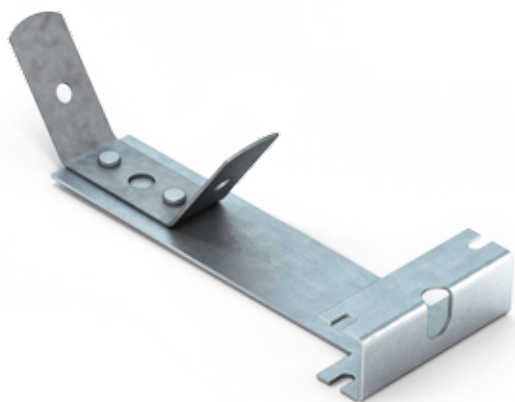
The peg is used as anchoring nail in vibrated concrete for the suspension wire with a hook in drywall construction. It is produced by compression molding from spring metal sheet with thickness of 1.20 mm which is covered by anticorrosive Delta Pro-tek surface. Installation is carried out by hammering into a concrete and subsequent hanging of the wire.



Order no.	Product no.	Article name	Diameter	Length	Load	Packing	Weight	Pallet	Bar code
TMD-0195-Z	1.348164 T	Hanger peg	4.20 mm	42 mm	0,25 kN	100 pcs	1,80 kg	100 000 pcs	8595136500927

QUICK HANGER RG

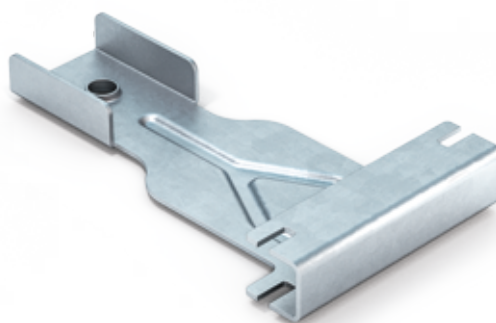
The bracket is used for a quick mounting of drywall steel profiles RG 45 into a horizontal construction of the building. It is produced by compression molding of rolled galvanized metal sheet with thickness of 1.00 mm and single spring clip which is pressed into the hanger with two rivets. The installation is done by rotating the bracket into the profile and subsequent hanging on the suspension wire which allows a quick and easy leveling of the construction.



Order no.	Product no.	Article name	Thickness	Load	Packing	Weight	Pallet	Bar code
TMD-0207	1.348202 T	Quick hanger bracket RG 45/18 - rotary	1.00 mm	0,25 kN	100 pcs	3,65 kg	6 000 pcs	8595136504215
TMD-2953	TMD-2953	Quick hanger no-spring RG 45/18 - rotary	1.00 mm	0,25 kN	100 pcs	2,65 kg	6 000 pcs	8595136504222

QUICK HANGER BA / BS

The bracket is used for a quick mounting of drywall steel profiles BA 50 or BS 50 into a horizontal construction of the building. It is produced by compression molding of rolled galvanized metal sheet with thickness of 1.00 mm and single spring clip which is pressed and locked into the hanger. The installation is done by rotating the bracket into the profile and subsequent hanging on the suspension wire which allows a quick and easy leveling of the construction.



Order no.	Product no.	Article name	Thickness	Load	Packing	Weight	Pallet	Bar code
TMD-4435	1.348211 BA5027	Quick hanger bracket BA 50/27 - rotary	1.00 mm	0,40 kN	100 pcs	3,36 kg	10 800 pcs	8595136504154
TMD-4437	1.348212 BA5027	Quick hanger no-spring BA 50/27 - rotary	1.00 mm	0,40 kN	100 pcs	2,61 kg	19 800 pcs	8595136504178
TMD-4436	1.348211 BS5027	Quick hanger bracket BS 50/27 - rotary	1.00 mm	0,40 kN	100 pcs	3,36 kg	10 800 pcs	8595136504161
TMD-4438	1.348212 BS5027	Quick hanger no-spring BS 50/27 - rotary	1.00 mm	0,40 kN	100 pcs	2,61 kg	19 800 pcs	8595136504185

QUICK HANGER CD



The bracket is used for a quick mounting of drywall steel profiles CD 60 into a horizontal construction of the building. It is produced by compression molding of rolled galvanized metal sheet with thickness of 0.80 mm and single spring clip which is pressed into the hanger with two rivets. The installation is done by sliding into the profile and subsequent hanging on the suspension wire which allows a quick and easy leveling of the construction.



Order no.	Product no.	Article name	Thickness	Load	Packing	Weight	Pallet	Bar code
TMD-0132	1.348114 T	Quick hanger bracket CD 60/27 - T	0.80 mm	0,25 kN	100 pcs	2,60 kg	10 800 pcs	8595136500125
TMD-1618	1.348114.1 T	Quick hanger no-spring CD 60/27 - T	0.80 mm	0,25 kN	100 pcs	1,75 kg	20 000 pcs	8595136504093



QUICK HANGER ROUNDED CD

The bracket is used for a quick mounting of drywall steel profiles CD 60 into a horizontal construction of the building. It is produced by compression molding of rolled galvanized metal sheet with thickness of 0.80 mm and single spring clip which is pressed into the hanger with two rivets. The installation is done by snapping into the profile and subsequent hanging on the suspension wire which allows a quick and easy leveling of the construction.



Order no.	Product no.	Article name	Thickness	Load	Packing	Weight	Pallet	Bar code
TMD-0133	1.348115 T	Quick hanger bracket CD 60/27 - rounded	0.80 mm	0,25 kN	100 pcs	2,35 kg	10 800 pcs	8595136500446
TMD-1614	1.348115.1 T	Quick hanger no-spring CD 60/27 - rounded	0.80 mm	0,25 kN	100 pcs	1,50 kg	20 000 pcs	8595136504109

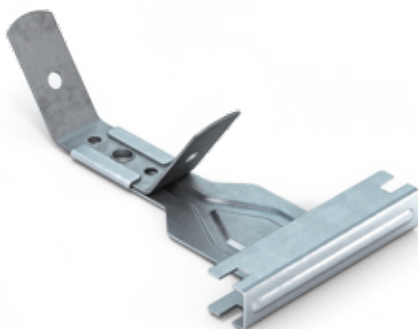


QUICK HANGER WITH LOCK CD

The bracket is used for a quick mounting of drywall steel profiles CD 60 into a horizontal construction of the building. It is produced by compression molding of rolled galvanized metal sheet with thickness of 0.80 mm and single spring clip which is pressed into the profile and subsequent hanging on the suspension wire which allows a quick and easy leveling of the construction. Locking part is used for any dilatation between the profile nad hanger.



Order no.	Product no.	Article name	Thickness	Load	Packing	Weight	Pallet	Bar code
TMD-3341	1.348115T/2	Quick hanger bracket CD 60/27 - with lock	0.80 mm	0,25 kN	100 pcs	2,80 kg	10 800 pcs	8595136500453



QUICK HANGER ROTARY CD

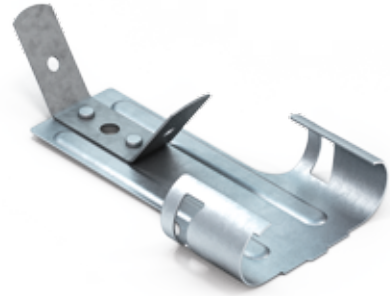
The bracket is used for a quick mounting of drywall steel profiles CD 60 into a horizontal construction of the building. It is produced by compression molding of rolled galvanized metal sheet with thickness of 0.80 mm and single spring clip which is pressed and locked into the hanger. The installation is done by rotating the bracket into the profile and subsequent hanging on the suspension wire which allows a quick and easy leveling of the construction.



Order no.	Product no.	Article name	Thickness	Load	Packing	Weight	Pallet	Bar code
TMD-4120	TMD-4120	Quick hanger bracket CD 60/27 - rotary	0.80 mm	0,40 kN	100 pcs	2,95 kg	10 800 pcs	8595136504130

QUICK HANGER FOUR-POINT CD

The bracket is used for a quick mounting of drywall steel profiles CD 60 into a horizontal construction of the building. It is produced by compression molding of rolled galvanized metal sheet with thickness of 0.80 mm or 1.00 mm and single spring clip which is pressed into the hanger by two rivets. The installation is done by rotating the bracket into the profile and subsequent hanging on the suspension wire which allows a quick and easy leveling of the construction.



Order no.	Product no.	Article name	Thickness	Load	Packing	Weight	Pallet	Bar code
TMD-3327	1.348118 T	Quick hanger bracket CD 60/27 - 4-point	0.80 mm	0,40 kN	100 pcs	4,03 kg	6 000 pcs	8595136500408
TMD-3436	1.348118,08	Quick hanger bracket CD 60/27 - 4-point	1.00 mm	0,40 kN	100 pcs	4,82 kg	6 000 pcs	8595136504819
TMD-2597	1.348171 T	Quick hanger no-spring CD 60/27 - 4-point	0.80 mm	0,40 kN	100 pcs	3,18 kg	8 400 pcs	8595136500972
TMD-3983	1.348171,1 T	Quick hanger no-spring CD 60/27 - 4-point	1.00 mm	0,40 kN	100 pcs	3,97 kg	8 400 pcs	8595136504116

QUICK HANGER SPRING CD

The bracket is used for a quick mounting of drywall steel profiles CD 60 into a horizontal construction of the building. It is produced by compression molding from spring metal sheet with thickness of 0.60 mm, wire with diameter of 4.00 mm and single spring clip. The installation is done by snapping into the profile and subsequent hanging on the suspension wire which allows a quick and easy leveling of the construction.



Order no.	Product no.	Article name	Thickness	Load	Packing	Weight	Pallet	Bar code
TMD-0139-Z	1.348119 T	Quick hanger bracket CD 60/27 - spring	0.60 mm	0,40 kN	100 pcs	3,30 kg	5 000 pcs	8595136500460

QUICK HANGER FOR MAIN RUNNERS

The bracket is used for a quick mounting of steel main runner (T) profiles into a horizontal construction of the building. It is produced by compression molding of rolled galvanized metal sheet with thickness of 1.25 mm and single spring clip which is pressed into the hanger with two rivets. The installation is done by sliding onto the profile and subsequent hanging on the suspension wire which allows a quick and easy leveling of the construction.



Order no.	Product no.	Article name	Thickness	Load	Packing	Weight	Pallet	Bar code
TMD-1652	TMD-1652	Quick hanger bracket T-profile (65)	1.25 mm	0,15 kN	100 pcs	1,82 kg	16 200 pcs	8595136504147
TMD-0136	1.348117 T	Quick hanger bracket T-profile (S10)	1.25 mm	0,15 kN	100 pcs	2,40 kg	16 200 pcs	8595136500095
TMD-0137	1.348117 T/A	Quick hanger bracket T-profile (Armstrong)	1.25 mm	0,15 kN	100 pcs	2,40 kg	16 200 pcs	8595136501276

QUICK HANGER WITH HOOK

The bracket is used for a quick mounting of steel main runner (T) profiles or extending suspension wire into a horizontal construction of the building. It is produced from galvanized steel wire with diameter of 4.00 mm and single spring clip. The installation is done by hooking into the profile and subsequent hanging on the suspension wire which allows a quick and easy leveling of the construction.



Order no.	Product no.	Article name	Thickness	Load	Packing	Weight	Pallet	Bar code
TMD-0157-Z	1.348129 T	Quick hanger bracket with hook	4.00 mm	0,40 kN	100 pcs	2,40 kg	10 500 pcs	8595136500644

QUICK HANGER FOR WOOD



The bracket is used for a quick mounting of a wooden laths into a solid construction of the building in horizontal system. It is produced by compression molding of rolled galvanized metal sheet with thickness of 1.00 mm and single spring clip which is press into the hanger with two rivets. The installation is done by screwing the timber to the hanger bracket and subsequent hanging on the suspension wire which allows a quick and easy leveling of the construction.



Order no.	Product no.	Article name	Thickness	Load	Packing	Weight	Pallet	Bar code
TMD-0135	1.348116 T	Quick hanger bracket for wood	1.00 mm	0,50 kN	100 pcs	2,10 kg	16 200 pcs	8595136500101

QUICK HANGER TRAGPROFIL U

The bracket is used for a quick mounting of a Tragprofil into a construction of the building in horizontal system. It is produced by compression molding of rolled galvanized metal sheet with thickness of 1.00 mm and single spring clip which is press into the hanger with two rivets. The installation is done by rotating into the profile and subsequent hanging on the suspension wire which allows a quick and easy leveling of the construction.



Order no.	Product no.	Article name	Thickness	Load	Packing	Weight	Pallet	Bar code
TMD-4467	1.348217	Quick hanger bracket U 40/28 - L	1.00 mm	0,20 kN	100 pcs	2,35 kg	16 200 pcs	8595136504208
TMD-4725	TMD-4725	Quick hanger no-spring U 48/28 - L	1.00 mm	0,40 kN	100 pcs	1,55 kg	16 200 pcs	8595136504192

ANGLE BRACKET BA / BS

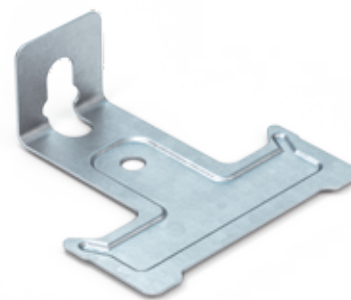
The angel bracket is used for mounting double cross grid created from drywall steel profiles BA 50 or BS 50. It is produced by compression molding of the rolled galvanized steel sheet with a thickness of 0.80 mm for profile height of 27 mm or 15 mm. In one cross connection there are two brackets needed, which are mounted into the bottom profile by rotating and the top profile is anchored by bending the horizontal paw. The locking with self drilling screw will ensure up to twice strength of the whole construction.



Order no.	Product no.	Article name	Thickness	Load	Packing	Weight	Pallet	Bar code
TMD-4431	1.348210 BA5015	Angle bracket BA 50/15	0.80 mm	0,17 kN	100 pcs	1,30 kg	19 800 pcs	8595136504239
TMD-4433	1.348210 BA5027	Angle bracket BA 50/27	0.80 mm	0,17 kN	100 pcs	1,55 kg	19 800 pcs	8595136504246
TMD-4432	1.348210 BS5015	Angle bracket BS 50/15	0.80 mm	0,17 kN	100 pcs	1,30 kg	19 800 pcs	8595136504253
TMD-4434	1.348210 BS5027	Angle bracket BS 50/27	0.80 mm	0,17 kN	100 pcs	1,55 kg	19 800 pcs	8595136504260

ANGLE BRACKET CD

The angle bracket is used for mounting double cross grid created from drywall steel profiles CD 60. It is produced by compression molding of the rolled galvanized steel sheet with a thickness of 0.80 mm. In one cross connection there are two brackets needed which are mounted into the bottom profile by sliding and the top profile is anchored by bending the horizontal paw. The locking with self drilling screw will ensure up to twice strength of the whole construction.

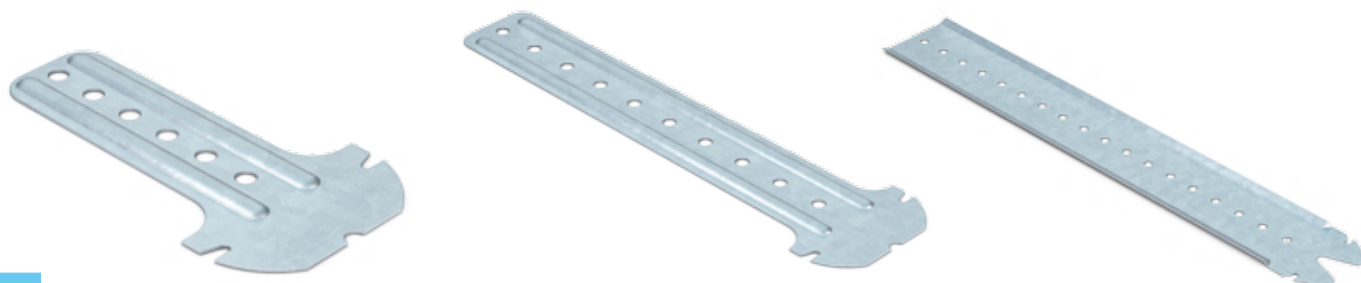


CD60

Order no.	Product no.	Article name	Thickness	Load	Packing	Weight	Pallet	Bar code
TMD-0131	1.348113 T	Angle bracket CD 60/27	0.80 mm	0,15 kN	100 pcs	1,40 kg	19 800 pcs	8595136500132

CHEVRON HANGER RG

The chevron hanger is used as mounting element for anchoring the drywall steel profiles RG 45 into the wooden construction of the buildings in a horizontal or sloping system. It is produced by compression molding of a rolled, galvanized metal sheet with thickness of 0.80 mm. It is screwed into the sides of a chevron or chalets with a flat headed screws. The installation is done by snapping into profile after screwing into the construction.

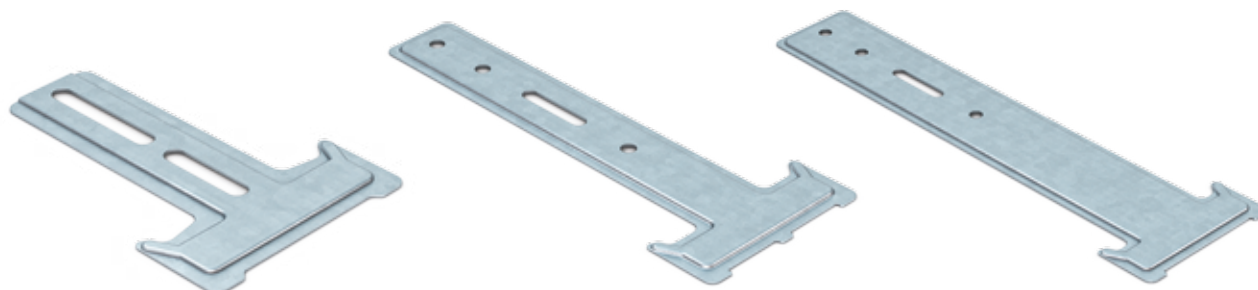


RG45

Order no.	Product no.	Article name	Thickness	Load	Packing	Weight	Pallet	Bar code
• TMD-0210	1.348205 T	Chevron hanger RG 45/18 - 080 mm	0.80 mm	0,30 kN	100 pcs	1,25 kg	20 000 pcs	8595136504307
• TMD-0209	1.348204 T	Chevron hanger RG 45/18 - 170 mm	0.80 mm	0,30 kN	100 pcs	2,75 kg	16 800 pcs	8595136504291
• TMD-0212	1.348207 T	Chevron hanger RG 45/18 - 300 mm	0.80 mm	0,30 kN	100 pcs	7,85 kg	8 800 pcs	8595136504314

CHEVRON HANGER CD

The chevron hanger is used as mounting element for anchoring the drywall steel profiles CD 60 into the wooden construction of the buildings in a horizontal or sloping system. It is produced by compression molding of a rolled, galvanized metal sheet with thickness of 0.80 mm and 1.00 mm. It is screwed into the sides of a chevron or chalets with a flat headed screws. The installation is done by sliding into profile after screwing into the construction.

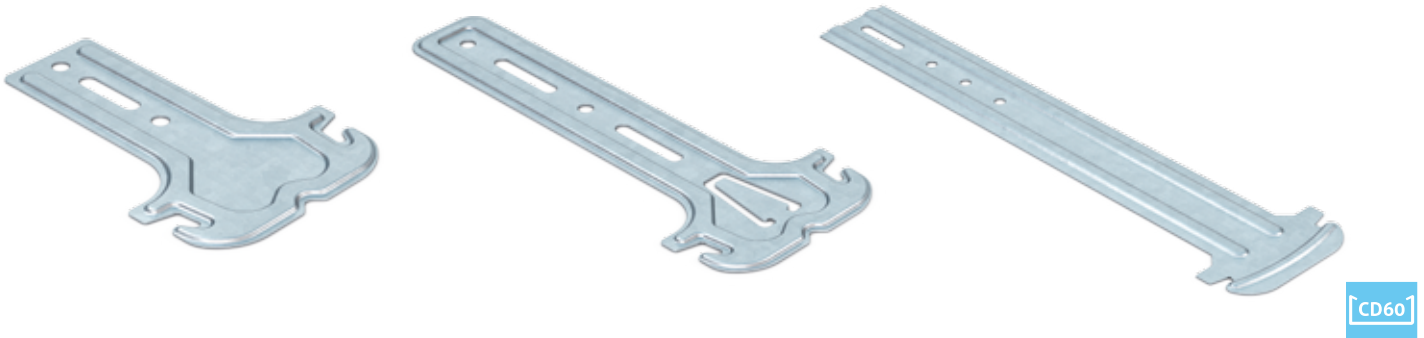


CD60

Order no.	Product no.	Article name	Thickness	Load	Packing	Weight	Pallet	Bar code
TMD-0120	1.348106 T	Chevron hanger CD 60/27 - T 090 mm	0.80 mm	0,25 kN	100 pcs	1,60 kg	10 500 pcs	8595136500224
TMD-0121	1.348107 T	Chevron hanger CD 60/27 - T 150 mm	1.00 mm	0,25 kN	100 pcs	3,35 kg	10 800 pcs	8595136500200
TMD-0122	1.348107.03T	Chevron hanger CD 60/27 - T 170 mm	1.00 mm	0,25 kN	100 pcs	3,65 kg	10 800 pcs	8595136501450
TMD-0125	1.348108 T	Chevron hanger CD 60/27 - T 200 mm	1.00 mm	0,25 kN	100 pcs	5,70 kg	9 000 pcs	8595136500361
TMD-0126	1.348109 T	Chevron hanger CD 60/27 - T 250 mm	1.00 mm	0,25 kN	100 pcs	7,2 kg	8 400 pcs	8595136500378
TMD-1087	1.348109,3T	Chevron hanger CD 60/27 - T 300 mm	1.00 mm	0,25 kN	100 pcs	8,8 kg	7 200 pcs	8595136501320
TMD-1485	1.348109,4T	Chevron hanger CD 60/27 - T 350 mm	1.00 mm	0,25 kN	100 pcs	9,6 kg	6 000 pcs	8595136501337
TMD-0960	1.348109,5T	Chevron hanger CD 60/27 - T 400 mm	1.00 mm	0,25 kN	100 pcs	11,2 kg	4 400 pcs	8595136501344
TMD-1583	1.348109,6T	Chevron hanger CD 60/27 - T 450 mm	1.00 mm	0,25 kN	50 pcs	6,00 kg	4 400 pcs	8595136501351
TMD-1739	1.348109,7T	Chevron hanger CD 60/27 - T 500 mm	1.00 mm	0,25 kN	50 pcs	6,80 kg	-	8595136501368

CHEVRON HANGER ROUNDED CD

The chevron hanger is used as mounting element for anchoring the drywall steel profiles CD 60 into the wooden construction of the buildings in a horizontal or sloping system. It is produced by compression molding of a rolled, galvanized metal sheet with thickness of 1.00 mm. It is screwed into the sides of a chevron or chalets with a flat headed screws. The installation is done by snapping into profile after screwing into the construction.



Order no.	Product no.	Article name	Thickness	Load	Packing	Weight	Pallet	Bar code
TMD-0130	1.348112 T	Chevron hanger CD 60/27 - R 090 mm	1.00 mm	0,25 kN	100 pcs	2,45 kg	10 500 pcs	8595136500392
TMD-0129	1.348111 T	Chevron hanger CD 60/27 - R 120 mm	1.00 mm	0,25 kN	100 pcs	3,20 kg	10 800 pcs	8595136500217
TMD-0128	1.348110.1T	Chevron hanger CD 60/27 - R 150 mm	1.00 mm	0,25 kN	100 pcs	3,70 kg	10 800 pcs	8595136500385
TMD-0127	1.348110 T	Chevron hanger CD 60/27 - R 170 mm	1.00 mm	0,25 kN	100 pcs	3,95 kg	10 800 pcs	8595136500248
TMD-1766	1.348109,9,2	Chevron hanger CD 60/27 - R 200 mm	1.00 mm	0,25 kN	100 pcs	5,70 kg	9 000 pcs	8595136501375
TMD-1767	1.348109,9,3	Chevron hanger CD 60/27 - R 250 mm	1.00 mm	0,25 kN	100 pcs	7,00 kg	8 400 pcs	8595136501382
TMD-1768	1.348109,9,4	Chevron hanger CD 60/27 - R 300 mm	1.00 mm	0,25 kN	100 pcs	8,80 kg	7 200 pcs	8595136501399
TMD-1769	1.348109,9,5	Chevron hanger CD 60/27 - R 350 mm	1.00 mm	0,25 kN	100 pcs	9,80 kg	6 000 pcs	8595136501412
TMD-1770	1.348109,9,6	Chevron hanger CD 60/27 - R 400 mm	1.00 mm	0,25 kN	100 pcs	11,60 kg	4 400 pcs	8595136501429
TMD-1771	1.348109,9,7	Chevron hanger CD 60/27 - R 450 mm	1.00 mm	0,25 kN	50 pcs	6,40 kg	4 400 pcs	8595136501436
TMD-1772	1.348109,9,8	Chevron hanger CD 60/27 - R 500 mm	1.00 mm	0,25 kN	50 pcs	6,60 kg	-	8595136501443

CHEVRON HANGER CD - N

The chevron hanger is used as mounting element for anchoring the drywall steel profiles CD 60 into the wooden construction of the buildings in a horizontal or sloping system. It is produced by compression molding of a rolled, galvanized metal sheet with thickness of 1.00 mm. It is screwed into the sides of a chevron or chalets with a flat headed screws. The installation is done by snapping into profile after screwing into the construction.



Order no.	Product no.	Article name	Thickness	Load	Packing	Weight	Pallet	Bar code
TMD-0123	1.348107.2T	Chevron hanger CD 60/27 - N 170 mm	1.00 mm	0,25 kN	100 pcs	3,65 kg	10 800 pcs	8595136501467
TMD-3083	1.348107.3 T	Chevron hanger CD 60/27 - N 270 mm	1.00 mm	1,36 kN	100 pcs	7,80 kg	10 500 pcs	8595136501474

CHEVRON HANGER PC

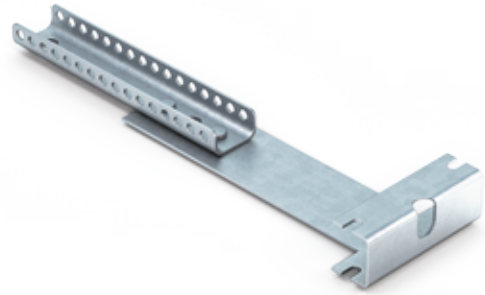
The chevron hanger is used as mounting element for anchoring the drywall steel profiles PC 60 into the wooden construction of the buildings in a horizontal or sloping system. It is produced by compression molding of a rolled, galvanized metal sheet with thickness of 0.80 mm and 1.00 mm. It is screwed into the sides of a chevron or chalets with a flat headed screws. The installation is done by snapping into profile after screwing into the construction.



Order no.	Product no.	Article name	Thickness	Load	Packing	Weight	Pallet	Bar code
TMD-3905	1.348182 T	Chevron hanger PC 60/27 - 200 mm	0.80 mm	0,40 kN	100 pcs	3,62 kg	10 500 pcs	8595136502891
TMD-3906	1.348183 T	Chevron hanger PC 60/27 - 300 mm	1.00 mm	0,40 kN	100 pcs	8,50 kg	10 500 pcs	8595136504321

NONIUS BOTTOM PART RG

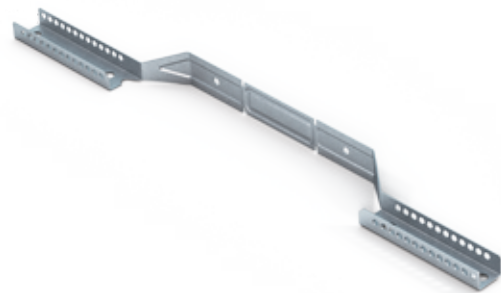
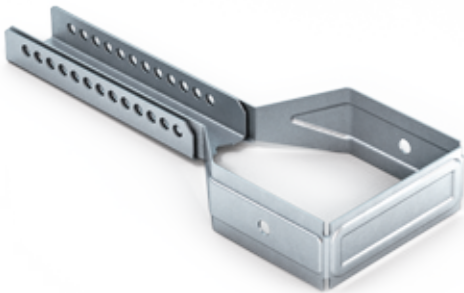
The nonius bottom part is used for mounting drywall steel profiles RG 45 into a construction of the building in horizontal system. It is produced by compression molding of rolled, galvanized metal sheet with thickness of 1.00 mm. It is used in the systems where higher load capacity, fire resistance and buckling strength is required. The set consists of upper part, bottom part and nonius cutters. The installation is done by rotating the hanger into the profile and fixing it into the upper part.



Order no.	Product no.	Article name	Thickness	Load	Packing	Weight	Pallet	Bar code
TMD-0208	1.348203 T	Nonius bottom part RG 45/18 - rotary	1.00 mm	0,25 kN	100 pcs	4,50 kg	6 000 pcs	8595136504369

NONIUS BOTTOM PART UA 50

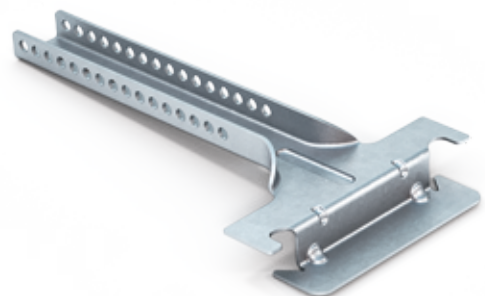
The nonius bottom part is used for mounting drywall steel profiles UA 50 into a construction of the building in horizontal system. It is produced by compression molding of rolled, galvanized metal sheet with thickness of 0.70 mm. It is used in the systems where higher load capacity, fire resistance and buckling strength is required. The set consists of a upper part, bottom part and nonius cutters. The installation is done by folding around the profile and fixing it into the upper part.



Order no.	Product no.	Article name	Thickness	Packing	Weight	Pallet	Bar code
TMD-5055	TMD-5055	Nonius bottom part UA 50 /40	0.70 mm	100 pcs	2,15 kg	6 000 pcs	8595136504796

NONIUS BOTTOM PART CD

The nonius bottom part is used for mounting drywall steel profiles CD 60 into a construction of the building in horizontal system. It is produced by compression molding of rolled, galvanized metal sheet with thickness of 1.25 mm. It is used in the systems where higher load capacity, fire resistance and buckling strength is required. The set consists of upper part, bottom part and nonius cutters. The installation is done by rotating into the profile in horizontal position and a subsequent elevation.



Order no.	Product no.	Article name	Thickness	Load	Packing	Weight	Pallet	Bar code
TMD-0188	1.348159 T	Nonius bottom part CD 60/27	1.25 mm	0,25 kN	100 pcs	4,35 kg	10 800 pcs	8595136500859

NONIUS SPRING BOTTOM PART CD

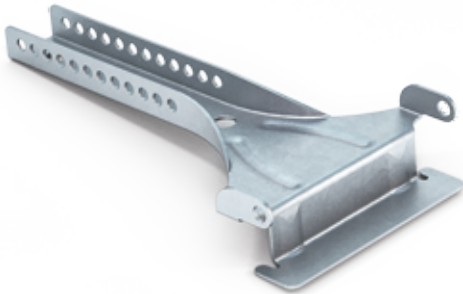


The nonius bottom part is used for mounting drywall steel profiles CD 60 into a construction of the building in horizontal system. It is produced by compression molding of rolled, galvanized metal sheet with thickness of 1.25 mm and single spring clip which is pressed into the hanger with two rivets. It is used in the systems where higher load capacity, fire resistance and buckling strength is required. This part is produced as universal element which can be mounted onto a nonius upper part or suspension wire. The installation is done by rotating into the profile in horizontal position and a subsequent elevation.



Order no.	Product no.	Article name	Thickness	Load	Packing	Weight	Pallet	Bar code
• TMD-3863	1.348159,2 T	Nonius spring bottom part CD 60/27	1.00 mm	0,40 kN	100 pcs	4,10 kg	6 000 pcs	8595136504345

NONIUS BOTTOM PART WITH LOCK CD

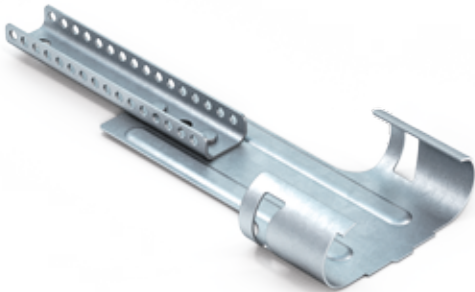


The nonius bottom part is used for mounting drywall steel profiles CD 60 into a construction of the building in horizontal system. It is produced by compression molding of rolled, galvanized metal sheet with thickness of 1.00 mm and it includes two additional lateral screw holes which works as lock for higher strenght. It is used in the systems where higher load capacity, fire resistance and buckling strength is required. The set consists of upper part, bottom part and nonius cotters. The installation is done by rotating into the profile in horizontal position and a subsequent elevation.



Order no.	Product no.	Article name	Thickness	Load	Packing	Weight	Pallet	Bar code
TMD-3918	1.348159 N	Nonius bottom part CD 60/27 – with lock	1.00 mm	0,40 kN	100 pcs	4,10 kg	6 800 pcs	8595136508695

NONIUS BOTTOM PART FOUR-POINT CD



The nonius bottom part is used for mounting drywall steel profiles CD 60 into a construction of the building in horizontal system. It is produced by compression molding of rolled, galvanized metal sheet with thickness of 0.80 mm and 1.00 mm. It is used in the systems where higher load capacity, fire resistance and buckling strength is required. The set consists of upper part, bottom part and nonius cotters. The installation is done by rotating the hanger into the profile and fixing it into the upper part.



Order no.	Product no.	Article name	Thickness	Load	Packing	Weight	Pallet	Bar code
TMD-0191	1.348162 T	Nonius bottom part CD 60/27 - four-point	0.80 mm	0,40 kN	100 pcs	5,0 kg	6 000 pcs	8595136500903
TMD-3985	1.348162,1 T	Nonius bottom part CD 60/27 - four-point	1.00 mm	0,40 kN	100 pcs	5,8 kg	6 000 pcs	8595136504338

NONIUS BOTTOM PART FOR MAIN RUNNERS



The nonius bottom part is used for mounting steel main runner (T) profiles into a construction of the building in horizontal system. It is produced by compression molding of rolled, galvanized metal sheet with thickness of 1.00 mm. It is used in the systems where higher load capacity, fire resistance and buckling strength is required. The set consists of upper part, bottom part and nonius cotters. The installation is done by sliding the hanger onto the profile and fixing it into the upper part.



Order no.	Product no.	Article name	Thickness	Load	Packing	Weight	Pallet	Bar code
TMD-0189	1.348160 T	Nonius bottom part T-profile	1.00 mm	0,40 kN	100 pcs	4,50 kg	10 800 pcs	8595136500866

NONIUS BOTTOM PART FOR WOOD

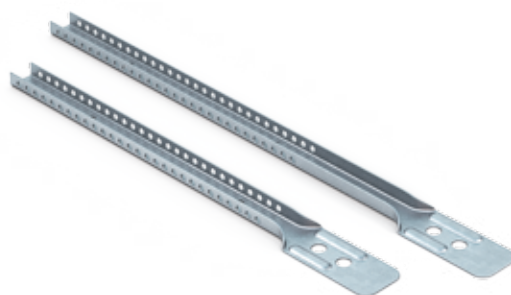
The nonius bottom part is used for mounting wooden frames into a construction of the building in horizontal system. It is produced by compression molding of rolled, galvanized metal sheet with thickness of 1.00 mm. It is used in the systems where higher load capacity, fire resistance and buckling strength is required. The set consists of upper part, bottom part and nonius cotters. The installation is done by screwing the wooden lath onto the hanger and fixing it into the upper part.



Order no.	Product no.	Article name	Thickness	Load	Packing	Weight	Pallet	Bar code
TMD-0190	1.348161 T	Nonius bottom part for wood	1.00 mm	0,50 kN	100 pcs	4,40 kg	10 800 pcs	8595136500873

NONIUS UPPER PART

The element is used as upper part of nonius set for drywall construction in horizontal system. It is produced by compression molding of rolled, galvanized metal sheet with thickness of 1.00 mm. It is used in the systems where higher load capacity, fire resistance and buckling strength is required. The set consists of a upper part, bottom part and nonius cotters. The installation is done by ceiling pin or nail plugs into a building structure.



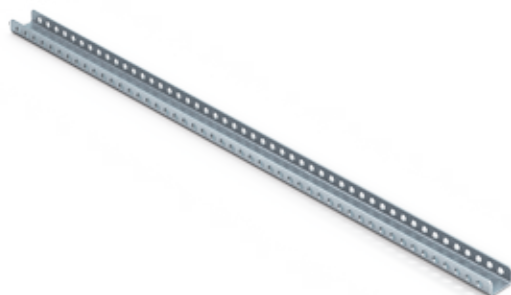
Atypical length production up to 3000 mm possible.



Order no.	Product no.	Article name	Thickness	Load	Packing	Weight	Bar code
TMD-3779-Z	1.348151.0 N	Nonius upper part - 0140 mm	1.00 mm	0.40 kN	100 pcs	3,20 kg	8595136504352
TMD-3780-Z	1.348151 N	Nonius upper part - 0240 mm	1.00 mm	0.40 kN	100 pcs	4,90 kg	8595136500651
TMD-3781-Z	1.348152 N	Nonius upper part - 0340 mm	1.00 mm	0.40 kN	100 pcs	6,90 kg	8595136500668
TMD-3782-Z	1.348153 N	Nonius upper part - 0440 mm	1.00 mm	0.40 kN	100 pcs	8,60 kg	8595136500675
TMD-3783-Z	1.348154 N	Nonius upper part - 0540 mm	1.00 mm	0.40 kN	100 pcs	9,30 kg	8595136500682
TMD-3784-Z	1.348155 N	Nonius upper part - 0640 mm	1.00 mm	0.40 kN	100 pcs	11,0 kg	8595136500699
TMD-3785-Z	1.348156 N	Nonius upper part - 0740 mm	1.00 mm	0.40 kN	100 pcs	12,70 kg	8595136500828
TMD-3786-Z	1.348157 N	Nonius upper part - 0840 mm	1.00 mm	0.40 kN	100 pcs	14,20 kg	8595136500835
TMD-3787-Z	1.348158 N	Nonius upper part - 0940 mm	1.00 mm	0.40 kN	100 pcs	16,10 kg	8595136500842

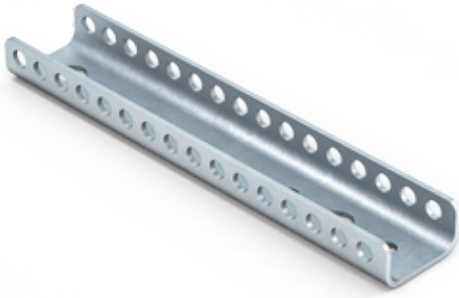
NONIUS EXTENDER

The element is used as extension part of nonius set for drywall construction in horizontal system. It is produced by compression molding of rolled, galvanized metal sheet with thickness of 1.00 mm. It is used in the systems where higher load capacity, fire resistance and buckling strength is required. The set consists of upper part, bottom part and nonius cotters. The extender is used for a long or variable suspension and it is mounted between the upper and bottom part with the connector.



Order no.	Product no.	Article name	Thickness	Load	Packing	Weight	Pallet
TMD-3435-Z	TMD-3435-Z	Nonius extender - 1000 mm	1.00 mm	0,40 kN	25 pcs	4,15 kg	1 000 pcs
TMD-0614-Z	TMD-0614-Z	Nonius extender - 2000 mm	1.00 mm	0,40 kN	25 pcs	8,30 kg	1 000 pcs
TMD-4577-Z	1.348163.9N	Nonius extender - 3000 mm	1.00 mm	0,40 kN	25 pcs	12,50 kg	1 000 pcs

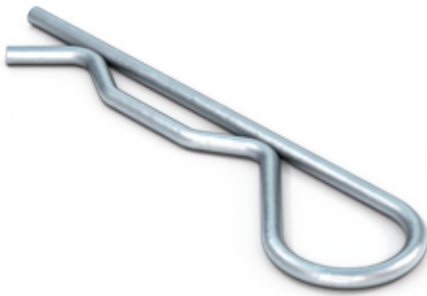
NONIUS CONNECTOR



The element is used as connection part of nonius set for a drywall construction in horizontal system. It is produced by compression molding of rolled, galvanized metal sheet with thickness of 1.00 mm. It is used in the systems where higher load capacity, fire resistance and buckling strength is required. The set consists of upper part, bottom part and nonius cotters. The connector is used for two parts of nonius which have the same width and there is no other possibility of connection - for example the upper part and extender.



Order no.	Product no.	Article name	Thickness	Load	Packing	Weight	Pallet	Bar code
TMD-0194	1.348163.2T	Nonius connector - 100 mm	1.00 mm	0,40 kN	100 pcs	1,80 kg	20 000 pcs	8595136504376
TMD-2110	1.348163.3T	Nonius connector - 170 mm	1.00 mm	0,40 kN	100 pcs	3,75 kg	10 800 pcs	8595136504383

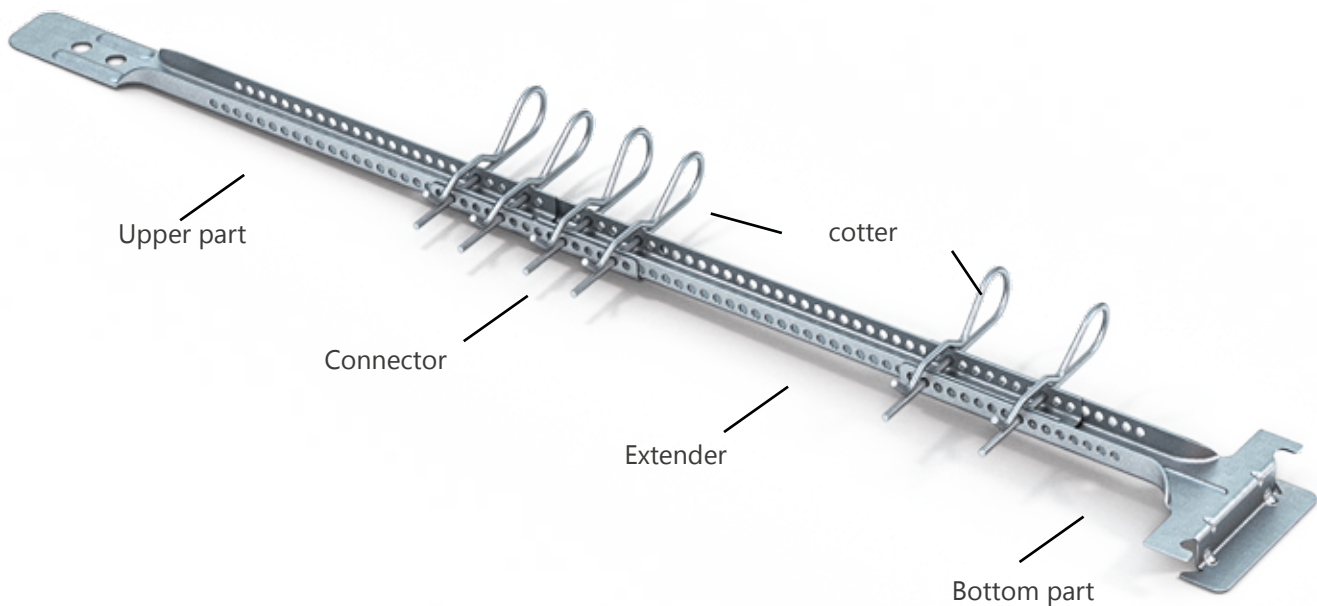


NONIUS COTTER

The element is used as security for two parts of nonius set for drywall construction in horizontal system. It is produced by compression molding of spring wire with diameter of 2.50 mm which is covered by anticorrosive Delta Protpekt surface. It is used in the systems where higher load capacity, fire resistance and buckling strength is required. The set consists of upper part, bottom part and nonius cotters. To ensure the structural strength it is recommended to use two pieces for one connection.



Order no.	Product no.	Article name	Diameter	Load	Packing	Weight	Pallet	Bar code
TMD-0192-Z	1.348163 , 1 T	Nonius cotter	2.50 mm	0,25 kN	100 pcs	0,61 kg	50 000 pcs	8595136502594



CONNECTING ANGLE 1.5

The angle is used for anchoring the drywall steel profiles UA into construction of the building in vertical system. It is produced by compression molding of rolled, galvanized metal sheet with thickness of 1.50 mm. The element is attached into construction by nail plugs and into the UA profiles by metric screws. The angle can be also used for fastening a steel door frame. The connecting parts are not included in the package.



UA50 UA75 UA100

Order no.	Product no.	Article name	Thickness	Packing	Weight	Pallet	Bar code
TMD-0196	1.348165 T	Connecting angle UA 050	1.50 mm	100 pcs	5,84 kg	10 500 pcs	8595136500255
TMD-0197	1.348166 T	Connecting angle UA 075	1.50 mm	100 pcs	10,55 kg	8 800 pcs	8595136500262
TMD-0198	1.348167 T	Connecting angle UA 100	1.50 mm	100 pcs	16,15 kg	5 400 pcs	8595136500934

CONNECTING ANGLE 2.0

The angle is used for anchoring the drywall steel profiles UA into a construction of the building in vertical system. It is produced by compression molding of rolled, galvanized metal sheet with thickness of 2.00 mm. The element is attached into a construction by nail plugs and into the UA profiles by metric screws. The angle can be also used for fastening a steel door frame. The connecting parts are not included in the package.

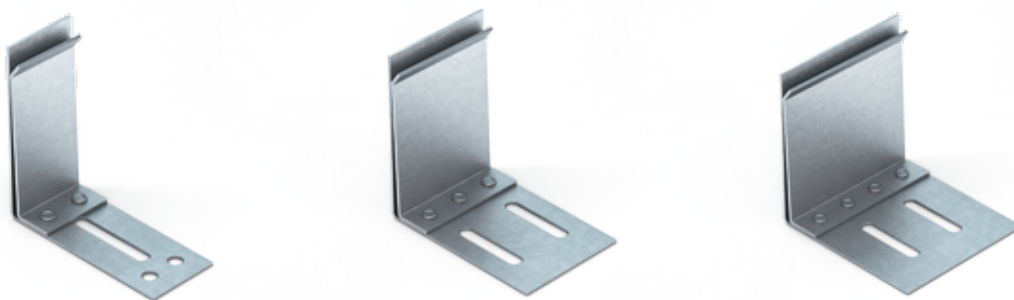


UA50 UA75 UA100 UA125

Order no.	Product no.	Article name	Thickness	Packing	Weight	Pallet	Bar code
TMD-4019	1.348165 C	Conecting angle UA 050	2.00 mm	8 pcs	0,89 kg	1 000 pcs	8595136504451
TMD-4020	1.348166 C	Conecting angle UA 075	2.00 mm	8 pcs	1,46 kg	1 000 pcs	8595136504468
TMD-4021	1.348167 C	Conecting angle UA 100	2.00 mm	8 pcs	2,35 kg	1 000 pcs	8595136504475
TMD-4022	1.348167,1 C	Conecting angle UA 125	2.00 mm	8 pcs	3,00 kg	1 000 pcs	8595136504482

CONNECTING ANGLE PLUG-IN

The angle is used for anchoring the drywall steel profiles UA into a construction of the building in vertical system. It is produced by compression molding of rolled, galvanized metal sheet with thickness of 2.00 mm. The plug plate is connected to the angle by riveting trough the steel which makes strong bond. The complete element is attached into a construction by nail plugs and by plugging the UA profile into a slot which speeds up the mounting. The angle can be also used for fastening a steel door frame. The connecting parts are not included in the package.



UA50 UA75 UA100 UA125

Order no.	Product no.	Article name	Thickness	Packing	Weight	Pallet	Bar code
TMD-4410	1.348165 C/S-T	Connecting angle plug-in UA 050	2.00 mm	8 pcs	1,52 kg	1 000 pcs	8595136504420
TMD-4421	1.348166 C/S-T	Connecting angle plug-in UA 075	2.00 mm	8 pcs	2,40 kg	1 000 pcs	8595136504413
TMD-4422	1.348167 C/S-T	Connecting angle plug-in UA 100	2.00 mm	8 pcs	3,45 kg	1 000 pcs	8595136504444
TMD-4423	1.348167,1 C/S-T	Connecting angle plug-in UA 125	2.00 mm	8 pcs	4,64 kg	1 000 pcs	8595136504437

CONNECTING ANGLE - MOUNTING SET

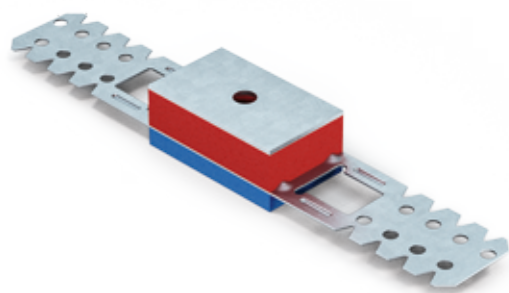


The angle is used for anchoring the drywall steel profiles UA into a construction of the building in vertical system. It is produced by compression molding of rolled, galvanized metal sheet with thickness of 1.50 mm. The element is attached into a construction by nail plugs and into the UA profiles by metric screws. The angle can be also used for fastening a steel door frame.

The mounting set contains – Nail plug 8x60 (8 pcs), washer M8 (8 pcs), bolt M8x16 (8pcs), nut M8 (8 ks), connecting angle (4 pcs)



Order no.	Product no.	Article name	Thickness	Packing	Weight	Bar code
TMD-3889	1.348165 SADA	Connecting angle UA 050 (mounting set)	1.50 mm	1 set	0,47 kg	8595136502648
TMD-3890	1.348166 SADA	Connecting angle UA 075 (mounting set)	1.50 mm	1 set	0,66 kg	8595136502655
TMD-3891	1.348167 SADA	Connecting angle UA 100 (mounting set)	1.50 mm	1 set	0,87 kg	8595136502662

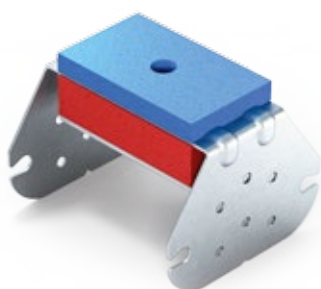


PROFILE BRACKET - ACOUSTIC SYLOMER

The profile bracket is used as a mounting element for direct anchoring of the steel drywall profiles into a vertical, horizontal or sloping construction of the building. It is produced by compression molding from rolled galvanized steel sheet with thickness of 1.00 mm and subsequent gluing the acoustic sylomer which helps to reduce a vibration and structural noise. The most common use is near the railways, subways or road transport.



Order no.	Product no.	Article name	Thickness	Load	Packing	Weight	Bar code
TMD-4469	1.348188 T	Profile bracket 60/125 (acoustic sylomer)	1.00 mm	0,40 kN	35 pcs	2,76 kg	8595136504499



CROSS CONNECTOR - ACOUSTIC SYLOMER

The cross connector is used for mounting the double cross grid created from drywall steel profiles PC 60. It is produced by compression molding of the rolled galvanized steel sheet with a thickness of 1.00 mm and subsequent gluing the acoustic sylomer which helps to reduce a vibration and structural noise. The most common use is near the railways, subways or road transport



Order no.	Product no.	Article name	Thickness	Load	Packing	Weight	Bar code
TMD-4470	1.348189 T	Cross connector PC 60/27 (acoustic sylomer)	1.00 mm	0,40 kN	35 pcs	2,76 kg	8595136504543

PROFILE BRACKET - ACOUSTIC RUBBER

The profile bracket is used as a mounting element for direct anchoring of the steel drywall profiles into a solid vertical, horizontal or the sloping construction of the building. It is produced by compression molding from rolled galvanized steel sheet with thickness of 0.80 mm, 1.00 mm and subsequent attachment of the acoustic rubber which helps to reduce a vibration and structural noise. The most common use is near the railways, subways or road transport.



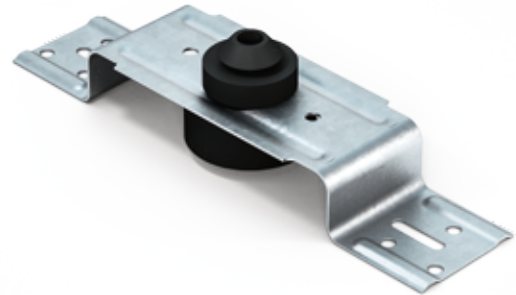
Order no.	Product no.	Article name	Thickness	Load	Packing	Weight	Pallet	Bar code
TMD-4853	TMD-4853	Profile bracket 50/125 (acoustic rubber)	0.80 mm	0,40 kN	100 pcs	5,70 kg	6 600 pcs	8595136504505
TMD-3791	TMD-3791	Profile bracket 50/125 (acoustic rubber)	1.00 mm	0,40 kN	100 pcs	6,65 kg	6 600 pcs	8595136504840



Order no.	Product no.	Article name	Thickness	Load	Packing	Weight	Pallet	Bar code
TMD-4083	TMD-4083	Profile bracket 60/125 (acoustic rubber)	0.80 mm	0,40 kN	100 pcs	5,90 kg	6 600 pcs	8595136504512
TMD-3111	TMD-3111	Profile bracket 60/125 (acoustic rubber)	1.00 mm	0,40 kN	100 pcs	7,10 kg	6 600 pcs	8595136504529
TMD-3411	TMD-3411	Profile bracket 60/200 (acoustic rubber)	0.80 mm	0,40 kN	100 pcs	7,99 kg	2 000 pcs	8595136504857
TMD-4071	TMD-4071	Profile bracket 60/200 (acoustic rubber)	1.00 mm	0,40 kN	100 pcs	8,20 kg	2 000 pcs	8595136504536

ADJUSTING ROCKER BAR - ACOUSTIC RUBBER

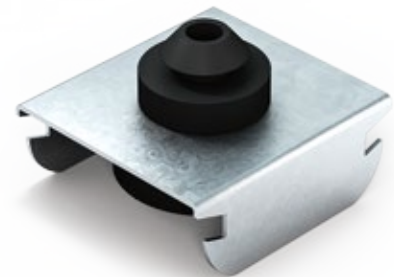
Similarly to the profile bracket also the adjusting rocker bar is used for direct mounting of drywall steel profiles into vertical, horizontal or sloping solid structure of the building. A main difference in comparison with profile bracket is pressed bend which gives to the hanger acoustic properties and higher loading. It is mostly used in the rooms where the higher fire resistance is needed. The element is produced by compression molding from rolled galvanized steel sheet with thickness of 0.80 mm and subsequent attachment of the acoustic rubber which helps to reduce a vibration and structural noise. The most common use is near the railways, subways or road transport.



Order no.	Product no.	Article name	Thickness	Load	Packing	Weight	Bar code
• TMD-0088	TMD-0088	Adjusting rocker bar 60/035 (acoustic rubber)	0.80 mm	0,40 kN	100 pcs	4,40 kg	8595136504550
• TMD-4810	TMD-4810	Adjusting rocker bar 60/065 (acoustic rubber)	0.80 mm	0,40 kN	100 pcs	5,40 kg	8595136504567
• TMD-0109	TMD-0109	Adjusting rocker bar 60/095 (acoustic rubber)	0.80 mm	0,40 kN	100 pcs	6,40 kg	8595136504574

DIRECT HANGER BA / BS - ACOUSTIC RUBBER

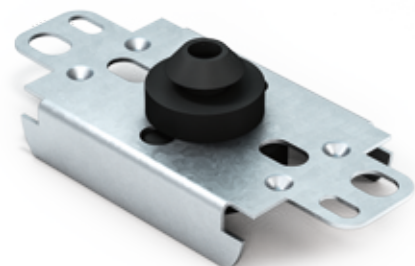
The hanger is used for low direct mounting of drywall steel profiles BA 50 or BS 50 into a vertical, horizontal or the sloping construction of the building. It is produced by compression molding from rolled galvanized steel sheet with thickness of 1.00 mm and subsequent attachment of the acoustic rubber which helps to reduce a vibration and structural noise. The most common use is near the railways, subways or road transport.



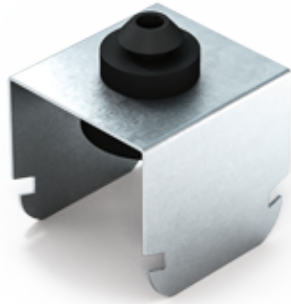
Order no.	Product no.	Article name	Thickness	Load	Packing	Weight	Bar code
• TMD-5062	TMD-5062	Direct hanger BA 50/15 (acoustic rubber)	1.00 mm	0,20 kN	100 pcs	3,95 kg	8595136504864
• TMD-5063	TMD-5063	Direct hanger BS 50/15 (acoustic rubber)	1.00 mm	0,20 kN	100 pcs	3,95 kg	8595136504871

DIRECT HANGER CD – ACOUSTIC RUBBER

The hanger is used for low direct mounting of drywall steel profiles CD 60 into a vertical horizontal or the sloping construction of the building. It is produced by compression molding from rolled metal zinc sheet with thickness of 1.00 mm and subsequent attachment of the acoustic rubber which helps to reduce a vibration and structural noise. The most common use is near the railways, subways or road transport.



Order no.	Product no.	Article name	Thickness	Load	Packing	Weight	Pallet	Bar code
TMD-5062	TMD-5062	Direct hanger CD 60/27 (acoustic rubber)	1.00 mm	0,40 kN	100 pcs	4,20 kg	10 800 pcs	8595136502860



CROSS CONNECTOR BA / BS – ACOUSTIC RUBBER

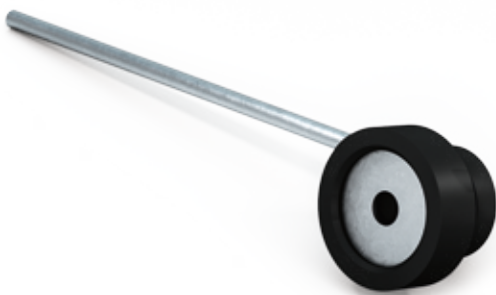
The cross connector is used for mounting the double cross grid created from drywall steel profiles BA 50 or BS 50. It is produced by compression molding of the rolled galvanized steel sheet with a thickness of 1.00 mm and subsequent attachment of the acoustic rubber which helps to reduce a vibration and structural noise. The most common use is near the railways, subways or road transport.



Order no.	Product no.	Article name	Thickness	Load	Packing	Weight	Bar Code
• TMD-5064	TMD-5064	Cross connector BA 50/27 (acoustic rubber)	1.00 mm	0,80 kN	100 pcs	6,10 kg	8595136504888
• TMD-5065	TMD-5065	Cross connector BS 50/27 (acoustic rubber)	1.00 mm	0,80 kN	100 pcs	6,10 kg	8595136504895

SUSPENSION WIRE – ACOUSTIC RUBBER

The element is made of galvanized steel wire with diameter of 4.00 mm and subsequent attachment of the acoustic rubber which helps to reduce a vibration and structural noise. It is used for suspension of the steel drywall or main profile structures into construction of the building. The straight end of suspension wire can be used for sliding in the butterfly double clip or spring hanger brackets. The most common use is near the railways, subways or road transport.



Order no.	Product no.	Article name	Thickness	Load	Packing	Weight	Bar Code
• TMD-4846	TMD-4846	Suspension wire - 0125 mm (acoustic rubber)	4.00 mm	0,40 kN	100 pcs	2,90 kg	8595136504581
• TMD-4847	TMD-4847	Suspension wire - 0250 mm (acoustic rubber)	4.00 mm	0,40 kN	100 pcs	4,15 kg	8595136504598
• TMD-4829	TMD-4829	Suspension wire - 0375 mm (acoustic rubber)	4.00 mm	0,40 kN	50 pcs	2,68 kg	8595136504604
• TMD-4848	TMD-4848	Suspension wire - 0500 mm (acoustic rubber)	4.00 mm	0,40 kN	25 pcs	1,64 kg	8595136504611
• TMD-4849	TMD-4849	Suspension wire - 0750 mm (acoustic rubber)	4.00 mm	0,40 kN	25 pcs	2,27 kg	8595136504628
• TMD-4850	TMD-4850	Suspension wire - 1000 mm (acoustic rubber)	4.00 mm	0,40 kN	25 pcs	2,87 kg	8595136504635
• TMD-4851	TMD-4851	Suspension wire - 1500 mm (acoustic rubber)	4.00 mm	0,40 kN	25 pcs	4,08 kg	8595136504642
• TMD-4852	TMD-4852	Suspension wire - 2000 mm (acoustic rubber)	4.00 mm	0,40 kN	25 pcs	5,30 kg	8595136504659



NONIUS UPPER PART - ACOUSTIC RUBBER

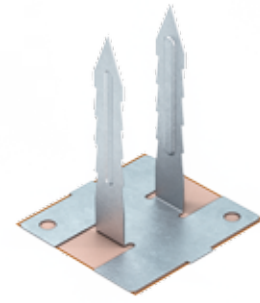
The element is used as upper part of nonius set for a drywall construction in horizontal system. It is produced by compression molding of rolled, galvanized metal sheet with thickness of 1.00 mm and subsequent attachment of the acoustic rubber which helps to reduce a vibration and structural noise. The most common use is near the railways, subways or road transport.



Order no.	Product no.	Article name	Thickness	Load	Packing	Weight	Bar Code
• TMD-3657	TMD-3657	Nonius upper part - 0140 mm (acoustic rubber)	1.00 mm	0,40 kN	100 pcs	4,50 kg	8595136504666
• TMD-3656	TMD-3656	Nonius upper part - 0240 mm (acoustic rubber)	1.00 mm	0,40 kN	100 pcs	6,20 kg	8595136504673
• TMD-3659	TMD-3659	Nonius upper part - 0340 mm (acoustic rubber)	1.00 mm	0,40 kN	50 pcs	4,35 kg	8595136504680
• TMD-3660	TMD-3660	Nonius upper part - 0440 mm (acoustic rubber)	1.00 mm	0,40 kN	50 pcs	5,15 kg	8595136504697
• TMD-3661	TMD-3661	Nonius upper part - 0540 mm (acoustic rubber)	1.00 mm	0,40 kN	50 pcs	6,15 kg	8595136504703
• TMD-3662	TMD-3662	Nonius upper part - 0640 mm (acoustic rubber)	1.00 mm	0,40 kN	50 pcs	8,05 kg	8595136504710
• TMD-3663	TMD-3663	Nonius upper part - 0740 mm (acoustic rubber)	1.00 mm	0,40 kN	50 pcs	8,05 kg	8595136504727
• TMD-3664	TMD-3664	Nonius upper part - 0840 mm (acoustic rubber)	1.00 mm	0,40 kN	50 pcs	8,85 kg	8595136504734
• TMD-3665	TMD-3665	Nonius upper part - 0940 mm (acoustic rubber)	1.00 mm	0,40 kN	50 pcs	9,95 kg	8595136504741

PENDEX

Pendex is used for mineral wool attaching in drywall partition walls as safety element against falling. It is produced by compression molding of a rolled, galvanized metal sheet with thickness of 0.60 mm and self adhesive double side tape. It is attached by sticking or screwing onto already mounted gypsum board from one side. Wool is thereafter spiked onto pendex so it would not fall out before the second side of wall is covered.



Order no.	Product no.	Article name	Thickness	Packing	Weight	Pallet	Bar code
TMD-0152	1.348127 T	Pendex	0.60 mm	100 pcs	1,67 kg	6 000 pcs	8595136500231

SPECIAL HOLDER FOR STEEL SHEETING

The hanger is used for low direct mounting of drywall steel profiles CD 60 onto steel construction of the building in horizontal vertical or sloping systems. It is produced by compression molding from rolled metal zinc sheet with thickness of 1.00 mm. The installation is done directly onto steel beam and snapping into profile.



Order no.	Product no.	Article name	Thickness	Packing	Weight	Pallet	Bar code
TMD-0158-Z	1.348129.1 T	Special holder for steel sheeting	1.00 mm	100 pcs	3,80 kg	5 250 pcs	8595136501948

BEAM CLAMP

The element is used for mounting drywall steel profiles onto a steel construction of the building in horizontal systems. It is produced by compression molding from rolled metal zinc sheet with thickness of 2.00 mm and threaded rod. The installation is done by clamping onto steel beam and mounting suspension wire with eyelet. The straight end of suspension wire can be used for sliding in the butterfly double clip or spring hanger brackets. The clamps are produced in three different sizes for beams with width of 50-210 mm.



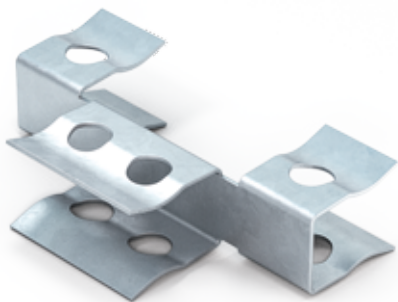
Order no.	Product no.	Article name	Diameter	Load	Packing	Weight	Pallet	Bar code
TMD-0177	1.348148 T	Beam clamp 050-085 mm	4.00 mm	0,50 kN	100 pcs	4,00 kg	10 800 pcs	8595136500415
TMD-0178	1.348149 T	Beam clamp 085-130 mm	4.00 mm	0,50 kN	100 pcs	4,80 kg	10 800 pcs	8595136500422
TMD-0179	1.348150 T	Beam clamp 130-210 mm	4.00 mm	0,50 kN	100 pcs	6,00 kg	10 800 pcs	8595136500439

HAMMER BEAM CLAMP

The element is used for mounting drywall steel profiles onto a steel construction of the building in horizontal systems. It is produced by compression molding from spring metal sheet with thickness of 1.00 mm which is covered by anticorrosive surface. The installation is done by hammering onto steel beam and mounting suspension wire with hook. The straight end of suspension wire can be used for sliding in the butterfly double clip or spring hanger brackets.



Order no.	Product no.	Article name	Thickness	Packing	Weight	Bar code	Bar code
TMD-2706-Z	1.348150,1 T	Hammer beam clamp 4-10 mm	1.00mm	0,50 kN	100 pcs	1.70 kg	8595136501528



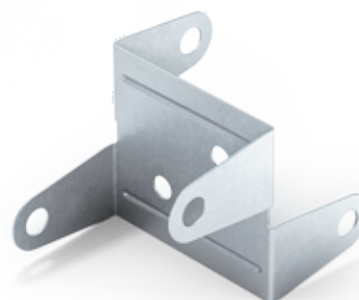
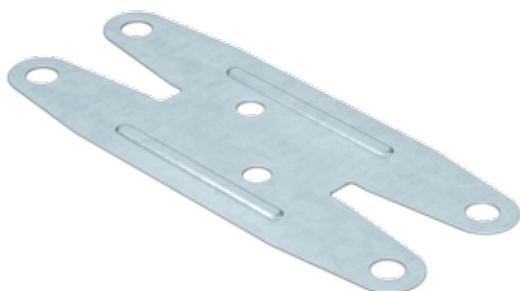
CLIP FOR TRANSVERSE JOINT

The clip is used for level connection of two gypsum boards with thickness of 9.5 mm. It is produced by compression molding of the rolled galvanized steel sheet with a thickness of 0.60 mm.

Product no.	Order no.	Article name	Thickness	Packing	Weight	Pallet	Bar code
TMD-3584	1.348181 T	Clip for transverse joint	0.60 mm	100 pcs	0,73 kg	26 400 pcs	8595136504390

WALL CLASP

The clip is used for level connection of two Eco-panel boards from pressed straw. It is produced by compression molding of the rolled galvanized steel sheet with a thickness of 0.60 mm. It is sold in flat form and bends during the mounting.



Product no.	Order no.	Article name	Thickness	Packing	Weight	Pallet	Bar code
TMD-0615	1.348170 T	Wall clasp	0.60 mm	100 pcs	1,91 kg	10 500 pcs	8595136500965

HANGER FOR MAIN RUNNERS - L

The bracket is used for mounting the steel main runner (T) profiles into a horizontal construction of the building. It is produced by compression molding of rolled galvanized metal sheet with thickness of 1.25 mm. The hole is used for anchoring by nail plug or screw into a solid structure. The installation is done by sliding onto the profile.



Product no.	Order no.	Article name	Thickness	Packing	Weight	Pallet	Bar code
TMD-2005	TMD-2005	Hanger for main runners - L 75 mm	1.25 mm	100 pcs	1,65 kg	20 000 pcs	8595136504772

HANGER FOR MAIN RUNNERS - ADJUSTABLE

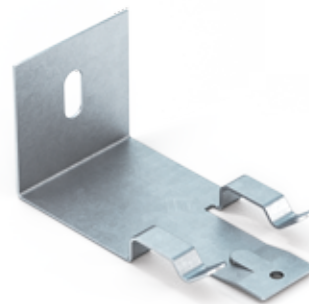
The bracket is used for mounting the steel main runner (T) profiles into a solid horizontal construction of the building. It is produced by compression molding of rolled galvanized metal sheet with thickness of 1.25 mm. The set is composed of two parts where each one can be used separately in different constructions



Product no.	Order no.	Article name	Thickness	Packing	Weight	Pallet
TMD-5116	TMD-5116	Hanger for main runners - adjustable	1.25 mm	100 pcs	0,75 kg	20 000 pcs
TMD-5117	TMD-5117	Adjustable angle 20x23x35 mm	1.50 mm	100 pcs	1,00 kg	20 000 pcs

HANGER FOR MAIN RUNNERS

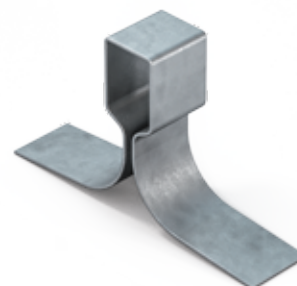
The bracket is used for mounting the steel main runner (T) profiles into a horizontal construction of the building. It is produced by compression molding of rolled galvanized metal sheet with thickness of 1.00 mm which is covered by anticorrosive Delta Protekt surface. The hole is used for anchoring by nail plug or screw into a solid structure. The installation is done by sliding onto the profile.



Order no.	Product no.	Article name	Thickness	Load	Packing	Weight	Bar code
TMD-3850-Z	1.348172 T	Hanger for main runners - 46.4 mm	1.00 mm	0,40 kN	100 pcs	2,57 kg	8595136502556
TMD-3852-Z	1.348172.1 T	Hanger for main runners - 56.4 mm	1.00 mm	0,40 kN	100 pcs	2,87 kg	8595136502563
TMD-3851-Z	1.348172.2 T	Hanger for main runners - 76.4 mm	1.00 mm	0,40 kN	100 pcs	3,55 kg	8595136502570
TMD-3853-Z	1.348172.3 T	Hanger for main runners - 96.4 mm	1.00 mm	0,40 kN	100 pcs	4,35 kg	8595136502587

SPRING FOR MINERAL

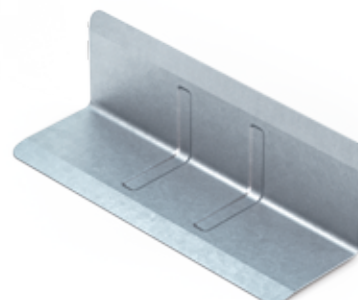
The spring is used for securing of mineral cassette board in main runner constructions against self-lifting. It is produced by compression molding of spring metal sheet with thickness of 0.60 mm which is covered by anticorrosive Delta Protekt surface. The installation is done by snapping onto the profile.



Order no.	Product no.	Article name	Thickness	Board	Packing	Weight	Bar code
TMD-0155-Z	1.348128.2 T	Spring for mineral 20 mm	0.60 mm	15 mm	100 pcs	0,290 kg	8595136504789
TMD-0156-Z	1.348128.3 T	Spring for mineral 25 mm	0.60 mm	10 mm	100 pcs	0,320 kg	8595136501511

CORNER PROTECTION

The corner is used as safety guard for gypsum boards or other material during the transportation. It is produced by compression molding of rolled galvanized metal sheet with thickness of 0.55 mm.



Product no.	Order no.	Article name	Thickness	Packing	Weight	Bar code
TMD-0200	1.348168 T	Corner protection for plasterboard	0,55 mm	100 pcs	3,20 kg	8595136500941

BLISTER PACKAGING

Special packaging in plastic transparent wrap which allows to expose the important elements in the shop and attract the interest of the customer. The benefits appreciate not only buyers but also employees which do not have to count individual pieces.



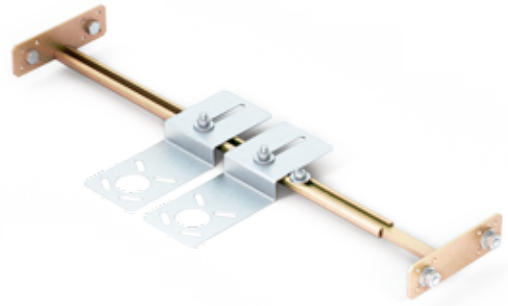
Order no.	Product no.	Article name	Thickness	Load	Packing	Weight	Bar code
TMD-3881	1.348131 T15	Suspension wire with eyelet - 0250 mm (blister 15)	4.00 mm	0,50 kN	15 pcs	0,38 kg	8595136502303
TMD-3877	1.348120 T15	Cross connector CD 60/27 - straight (blister 15)	0.80 mm	0,33 kN	15 pcs	0,57 kg	8595136502266
TMD-3873	1.348100 T15	Profile bracket 60/125 (blister 15)	0.80 mm	0,40 kN	15 pcs	0,77 kg	8595136502228
TMD-3876	1.348115 T15	Quick hanger bracket CD 60/27 - rounded (blister 15)	0.80 mm	0,25 kN	15 pcs	0,38 kg	8595136502259
TMD-3878	1.348123 T15	Section connector CD 60/27 - arch (blister 15)	0.80 mm	-	15 pcs	0,62 kg	8595136502273
TMD-3886	1.348104 T15	Adjusting rocker bar 60/065 (blister 15)	0.80 mm	0,60 kN	15 pcs	0,62 kg	8595136502327
TMD-3887	1.348105 T15	Adjusting rocker bar 60/095 (blister 15)	0.80 mm	0,60 kN	15 pcs	0,96 kg	8595136502334
TMD-3874	1.348107.2T15	Chevron hanger CD 60/27 - N 170 mm (blister 15)	1.00 mm	0,25 kN	15 pcs	0,57 kg	8595136502235
TMD-3875	1.348107.3 T15	Chevron hanger CD 60/27 - N 270 mm (blister 15)	1.00 mm	1,36 kN	15 pcs	1,08 kg	8595136502242



**SANITARY
SUPPORTS**

SUPPORT FOR DOUBLE FAUCETS

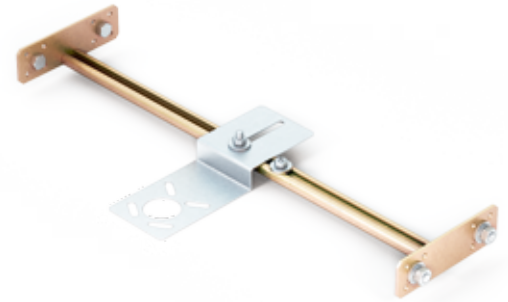
Sanitary support for wall mount double faucets is construction element which is produced by compression molding and sheet metal sections of „C“ shape. The metal profiles are attached to side plate-by welding and thus form two sliding spacers. To maintain the required resistance in humid environments, both structures are after welding protected with yellow (standard) or blue (on request) galvanized zinc. Fasteners provide attachment to the structure and fixing spacers.



Order no.	Product no.	Article name	Packing	Weight	Carton	Pallet	Bar code
TMD-0223	1.348308 T	RKB-01 support for double faucets	1 pc	1,02 kg	12 pcs	216 pcs	8595136500705

SUPPORT FOR SINGLE FAUCET

Sanitary support for wall mount single faucet is construction element which is produced by compression molding and sheet metal sections of „C“ shape. The metal profiles are attached to side plate-by welding and thus form two sliding spacers. To maintain the required resistance in humid environments, both structures are after welding protected with yellow (standard) or blue (on request) galvanized zinc. Fasteners provide attachment to the structure and fixing spacers.



Order no.	Product no.	Article name	Packing	Weight	Carton	Pallet	Bar code
TMD-0224	1.348309 T	RKB-02 support for single faucet	1 pc	0,88 kg	12 pcs	216 pcs	8595136500712

SUPPORT FOR FAUCET AND PIPE

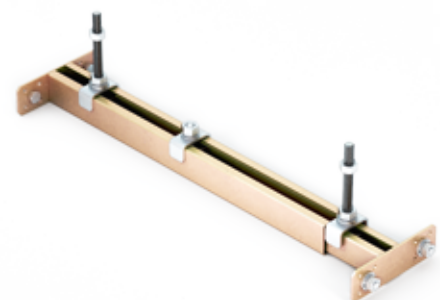
Sanitary support for double faucet and drain pipe is construction element which is produced by compression molding and sheet metal sections of „C“ shape. The metal profiles are attached to side plate-by welding and thus form two sliding spacers. To maintain the required resistance in humid environments, both structures are after welding protected with yellow (standard) or blue (on request) galvanized zinc. Fasteners provide attachment to the structure and fixing spacers.



Order no.	Product no.	Article name	Packing	Weight	Carton	Pallet	Bar code
TMD-0225	1.348310 T	RKBO-01 support for faucet and pipe	1 pc	1,20 kg	12 pcs	216 pcs	8595136500729

SUPPORT FOR BOILER AND RADIATOR

Sanitary support for boiler and radiator is construction element which is produced by compression molding and sheet metal sections of „C“ shape. The metal profiles are attached to side plate-by welding and thus form two sliding spacers. To maintain the required resistance in humid environments, both structures are after welding protected with yellow (standard) or blue (on request) galvanized zinc. Fasteners provide attachment to the structure and fixing spacers.



Order no.	Product no.	Article name	Packing	Weight	Carton	Pallet	Bar code
TMD-0863	1.348315 T	RKB-04 support for boiler and radiator	1 pc	1,85 kg	12 pcs	216 pcs	8595136501566

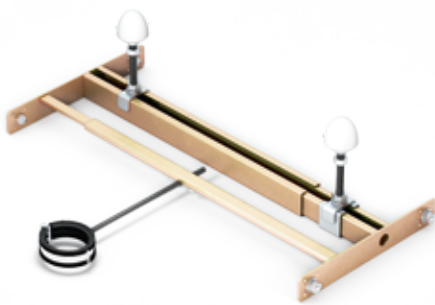
SUPPORT FOR PIPE



Sanitary support for drain pipe is construction element which is produced by compression molding and sheet metal sections of „C“ shape. The metal profiles are attached to side plate-by welding and thus form two sliding spacers. To maintain the required resistance in humid environments, both structures are after welding protected with yellow (standard) or blue (on request) galvanized zinc. Fasteners provide attachment to the structure and fixing spacers.

Order no.	Product no.	Article name	Packing	Weight	Carton	Pallet	Bar code
TMD-0218	1.348303 T	RKO-40 support for pipe 40 mm	1 pc	0,89 kg	12 pcs	216 pcs	8595136500736
TMD-0219	1.348304 T	RKO-50 support for pipe 50 mm	1 pc	0,89 kg	12 pcs	216 pcs	8595136500743
TMD-0220	1.348305 T	RKO-63 support for pipe 63 mm	1 pc	0,89 kg	12 pcs	216 pcs	8595136500750
TMD-0221	1.348306 T	RKO-70 support for pipe 70 mm	1 pc	0,89 kg	12 pcs	216 pcs	8595136500767
TMD-0222	1.348307 T	RKO-90 support for pipe 90/110 mm	1 pc	0,89 kg	12 pcs	216 pcs	8595136500774

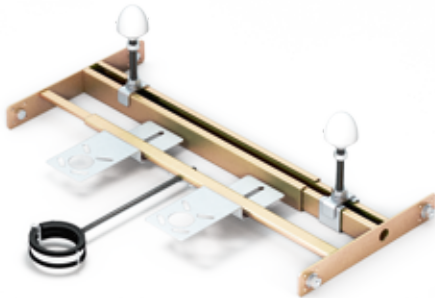
SUPPORT FOR SINK AND FAUCET



Sanitary support for sink and faucet is construction element which is produced by compression molding and sheet metal sections of „C“ shape. The metal profiles are attached to side plate-by welding and thus form two sliding spacers. To maintain the required resistance in humid environments, both structures are after welding protected with yellow (standard) or blue (on request) galvanized zinc. Fasteners provide attachment to the structure and fixing spacers.

Order no.	Product no.	Article name	Packing	Weight	Carton	Pallet	Bar code
TMD-0216	1.348301 T	RKU-01 support for sink and faucet	1 pc	2,60 kg	6 pcs	108 pcs	8595136500798

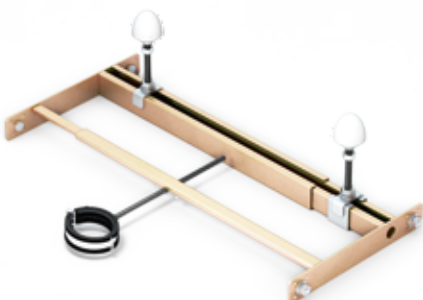
SUPPORT FOR SINK AND TAP



Sanitary support for sink and tap is construction element which is produced by compression molding and sheet metal sections of „C“ shape. The metal profiles are attached to side plate-by welding and thus form two sliding spacers. To maintain the required resistance in humid environments, both structures are after welding protected with yellow (standard) or blue (on request) galvanized zinc. Fasteners provide attachment to the structure and fixing spacers.

Order no.	Product no.	Article name	Packing	Weight	Carton	Pallet	Bar code
TMD-0214	1.348300 T	RKU-02 support for sink and tap	1 pc	2,90 kg	6 pcs	108 pcs	8595136500804

SUPPORT FOR URINAL

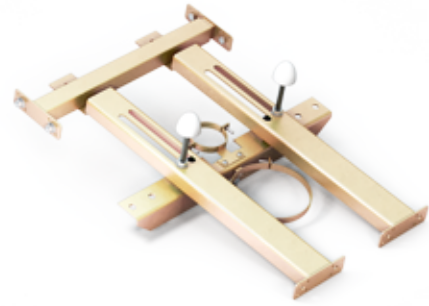


Sanitary support for urinal is construction element which is produced by compression molding and sheet metal sections of „C“ shape. The metal profiles are attached to side plate-by welding and thus form two sliding spacers. To maintain the required resistance in humid environments, both structures are after welding protected with yellow (standard) or blue (on request) galvanized zinc. Fasteners provide attachment to the structure and fixing spacers.

Order no.	Product no.	Article name	Packing	Weight	Carton	Pallet	Bar code
TMD-0217	1.348302 T	RKP-01 support for urinal	1 pc	2,58 kg	6 pcs	108 pcs	8595136500781

SUPPORT FOR TOILET

Sanitary support for toilet is construction element which is produced by compression molding and sheet metal sections of „C” shape. The metal profiles are attached to side plate-by welding and thus form two sliding spacers. To maintain the required resistance in humid environments, both structures are after welding protected with yellow (standard) or blue (on request) galvanized zinc. Fasteners provide attachment to the structure and fixing spacers.



Order no.	Product no.	Article name	Packing	Weight	Bar code
TMD-0226	1.348311 T	RKW-01 support for toilet	1 pc	5,10 kg	8595136500880

SUPPORT FOR BIDET

Sanitary support for bidet is construction element which is produced by compression molding and sheet metal sections of „C” shape. The metal profiles are attached to side plate-by welding and thus form two sliding spacers. To maintain the required resistance in humid environments, both structures are after welding protected with yellow (standard) or blue (on request) galvanized zinc. Fasteners provide attachment to the structure and fixing spacers.



Order no.	Product no.	Article name	Packing	Weight	Bar code
TMD-0227	1.348312 T	RKW-02 support for bidet	1 pc	5,40 kg	8595136500811

SUPPLEMENTAL LEG

The leg is used for mounting the sanitary supports into solid buildings tructure. It is produced by compression molding and sheet metal sections of „C” shape.To maintain the required resistance in humid environments, both structures are after welding protected with yellow (standard) or blue (on request) galvanized zinc.



Order no.	Product no.	Article name	Packing	Weight	Bar code
• TMD-0215	1.348300.1 T	RKS-01 supplemental leg	1 pair	3,80 kg	8595136501542

Notes

DOWELS



CEILING NAIL DN6

The nail is used as a mounting element for fastening the hangers into the concrete or solid materials. It allows the quick and easy installation by hammering into a predrilled hole. It is primarily intended for ceiling construction due to safety reasons in case of fire.



Order no.	Product no.	Article name	Diameter	Load	Packing	Weight	Carton	Pallet	Bar code
TMD-0431-Z	1.348806.1 T	Ceiling nail DN6 - 6x40 mm	6.00 mm	2,00 kN	100 pcs	1,15 kg	2 000 pcs	100 000 pcs	8595136508770

CEILING NAIL ZHOP

The nail is used as a mounting element for fastening the hangers into the concrete or solid materials. It allows the quick and easy installation by hammering into a predrilled hole. It is primarily intended for ceiling construction due to safety reasons in case of fire.



Order no.	Product no.	Article name	Diameter	Load	Packing	Weight	Carton
TMD-0430-Z	1.348806.1,2 T	Ceiling nail ZHOP - 6x35 mm	6.00 mm	0,35 kN	100 pcs	1,00 kg	1 000 pcs
TMD-0432-Z	1.348806.2 T	Ceiling nail ZHOP - 6x45 mm	6.00 mm	0,35 kN	100 pcs	1,20 kg	1 000 pcs
TMD-0433-Z	1.348806.3 T	Ceiling nail ZHOP - 6x55 mm	6.00 mm	0,35 kN	100 pcs	1,44 kg	1 000 pcs

CEILING NAIL ALLOY

The nail is used as a mounting element for fastening the hangers into the concrete or solid materials. It allows the quick and easy installation by hammering into a pre-drilled hole. It is primarily intended for ceiling construction due to safety reasons in case of fire.



Order no.	Product no.	Article name	Diameter	Load	Packing	Weight	Carton	Bar code
TMD-0434-Z	1.348807 T	Ceiling nail alloy - 6x30 mm	6.00 mm	0,70 kN	100 pcs	0,78 kg	2 400 pcs	8590108601695
TMD-0435-Z	1.348808 T	Ceiling nail alloy - 6x40 mm	6.00 mm	0,70 kN	100 pcs	1,02 kg	2 400 pcs	8590108601701
TMD-0436-Z	1.348809 T	Ceiling nail alloy - 6x50 mm	6.00 mm	0,70 kN	100 pcs	1,22 kg	1 800 pcs	8590108602289

STANDARD PLUG

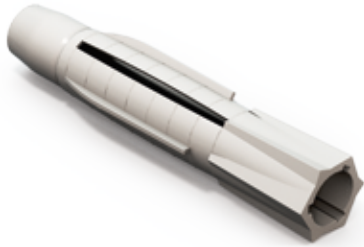
The standard plug is used in all types of building materials. It is made from high quality polypropylene material with temperature resistance from -20°C to +80°C. It allows the quick and easy installation by hammering into a pre-drilled hole followed by inserting the screw.

UPA plug is produced from nylon with resistance from -40 °C + 100 °C



Order no.	Product no.	Article name	Diameter	Length	Load	Packing	Weight	Bar code
TMD-1400-Z	1.348916.O T	UPP 06x30 standard plug	6.00 mm	30 mm	0,42 kN	100 pcs	0,05 kg	8590108601612
TMD-0512-Z	1.348916.1 T	UPP 08x40 standard plug	8.00 mm	40 mm	0,60 kN	100 pcs	0,11 kg	8590108600359
TMD-0513-Z	1.348916.2 T	UPP 10x50 standard plug	10.00 mm	50 mm	0,74 kN	50 pcs	0,11 kg	8590108600373
TMD-0514-Z	1.348916.3 T	UPA 14x75 standard plug	14.00 mm	75 mm	1,76 kN	20 pcs	0,17 kg	8590108400137

PLUG FOR HOLLOW SPACES



The plug is used in all type of building materials. It creates a knot in the cavities of material after tightening. The length of the screw must always exceed the length of the plug with fastening materials.

Order no.	Product no.	Article name	Diameter	Load	Packing	Weight	Bar code
TMD-0508-Z	1.348913 T	UH 06x37 - plug for hollow spaces	6.00 mm	0,35 kN	100 pcs	0,060 kg	8590108600599
TMD-0511-Z	1.348913,1 T	UH 06x51 - plug for hollow spaces	6.00 mm	0,35 kN	100 pcs	0,100 kg	8590108603057
TMD-0509-Z	1.348914 T	UH 08x50 - plug for hollow spaces	8.00 mm	0,48 kN	100 pcs	0,800 kg	8590108600605
TMD-0510-Z	1.348915 T	UH 10x60 - plug for hollow spaces	10.00 mm	0,60 kN	50 pcs	0,140 kg	8590108600612

NAIL PLUG



The nail plug is used for anchoring the wooden laths, beams, steel profiles into an existing support structures of solid building materials. The product consists of the nylon plug and the steel nail. It allows the quick and easy installation by hammering into a pre-drilled hole.

Order no.	Product no.	Article name	Load	Packing	Carton	Weight	Pallet	Bar code
TMD-0406-Z	1.348800.01 T	Nail plug 6x25 (TTT)	0,48 kN	200 pcs	4 800 pcs	0,610 kg	86 400 pcs	8590108403886
TMD-0405-Z	1.348800 T	Nail plug 6x35 (TTT)	0,48 kN	100 pcs	2 400 pcs	0,400 kg	86 400 pcs	8590108400977
TMD-0407-Z	1.348801 T	Nail plug 6x40 (TTT)	0,48 kN	100 pcs	2 400 pcs	0,440 kg	86 400 pcs	8590108400984
TMD-0408-Z	1.348802 T	Nail plug 6x45 (TTT)	0,48 kN	100 pcs	2 400 pcs	0,480 kg	86 400 pcs	8590108400991
TMD-0409-Z	1.348803 T	Nail plug 6x55 (TTT)	0,48 kN	100 pcs	2 000 pcs	0,540 kg	72 000 pcs	8590108401004
TMD-0410-Z	1.348804 T	Nail plug 6x60 (TTT)	0,48 kN	50 pcs	1 200 pcs	0,320 kg	43 200 pcs	8590108401011
TMD-0411-Z	1.348805 T	Nail plug 6x70 (TTT)	0,48 kN	50 pcs	1 200 pcs	0,360 kg	43 200 pcs	8590108401028
TMD-2013-Z	1.348805.00 T	Nail plug 6x80 (TTT)	0,65 kN	50 pcs	1 200 pcs	0,380 kg	43 200 pcs	8590108406191
TMD-0412-Z	1.348805.01 T	Nail plug 8x045 (TTT)	0,65 kN	50 pcs	1 200 pcs	0,400 kg	43 200 pcs	8590108401035
TMD-0413-Z	1.348805.02 T	Nail plug 8x060 (TTT)	0,65 kN	50 pcs	1 200 pcs	0,480 kg	43 200 pcs	8590108401042
TMD-0708-Z	1.348805.02.16 T	Nail plug 8x075 (TTT)	0,65 kN	50 pcs	1 200 pcs	0,580 kg	43 200 pcs	8590108401059
TMD-0414-Z	1.348805.03 T	Nail plug 8x080 (TTT)	0,65 kN	50 pcs	1 200 pcs	0,620 kg	43 200 pcs	8590108400960
TMD-0415-Z	1.348805.04 T	Nail plug 8x100 (TTT)	0,65 kN	50 pcs	1 200 pcs	0,740 kg	43 200 pcs	8590108401066
TMD-0416-Z	1.348805.05 T	Nail plug 8x120 (TTT)	0,65 kN	50 pcs	1 000 pcs	0,860 kg	36 000 pcs	8590108401073
TMD-0427-Z	1.348805.05.18 T	Nail plug 8x135 (TTT)	0,65 kN	50 pcs	1 000 pcs	0,980 kg	36 000 pcs	8590108401080

NAIL PLUG KEW



The nail plug is used for anchoring the wooden laths, beams, steel profiles into an existing support structures of solid building materials. The product consists of the nylon plug and the steel nail. It allows the quick and easy installation by hammering into a pre-drilled hole.

Order no.	Product no.	Article name	Diameter	Load	Packing	Weight	Bar code
TMD-0417-Z	1.348805.06 T	Nail plug 6x35 (KEW)	6.00 mm	50 pcs	0,18 kg	1 800 pcs	4013211331753
TMD-0417-Z	1.348805.07 T	Nail plug 6x40 (KEW)	6.00 mm	50 pcs	0,22 kg	1 800 pcs	4013211326872
TMD-0419-Z	1.348805.08 T	Nail plug 6x50 (KEW)	6.00 mm	50 pcs	0,24 kg	1 800 pcs	4013211331777
TMD-0420-Z	1.348805.09 T	Nail plug 6x60 (KEW)	6.00 mm	50 pcs	0,28 kg	1 800 pcs	4013211326896
TMD-0421-Z	1.348805.10 T	Nail plug 6x75 (KEW)	6.00 mm	50 pcs	0,36 kg	1 350 pcs	4013211331791
TMD-1382-Z	1.348805.10.1 T	Nail plug 6x80 (KEW)	6.00 mm	50 pcs	0,37 kg	1 350 pcs	4013211331807
TMD-0422-Z	1.348805.11 T	Nail plug 8x060 (KEW)	8.00 mm	50 pcs	0,54 kg	800 pcs	4013211326926
TMD-0423-Z	1.348805.12 T	Nail plug 8x080 (KEW)	8.00 mm	50 pcs	0,65 kg	800 pcs	4013211326933
TMD-0424-Z	1.348805.14 T	Nail plug 8x100 (KEW)	8.00 mm	50 pcs	0,78 kg	800 pcs	4013211326940
TMD-0425-Z	1.348805.15 T	Nail plug 8x120 (KEW)	8.00 mm	50 pcs	0,94 kg	400 pcs	4013211326957
TMD-1581-Z	1.348805.151 T	Nail plug 8x140 (KEW)	8.00 mm	50 pcs	1,08 kg	400 pcs	4013211326964
TMD-1456-Z	1.348805.18 T	Nail plug 8x160 (KEW)	8.00 mm	50 pcs	1,24 kg	300 pcs	4013211326971

NAIL PLUG TOTAL - FIXX

The unique universal nail plug for all types of material. It is produced from quality nylon casing and galvanized steel nail. The installation is done by hammering into a solid brick, screwing into a drywall board or hollow brick.



Order no.	Product no.	Article name	Diameter	Load	Packing	Weight	Carton	Bar code
TMD-0922-Z	1.348805.16,1 T	Nail plug 6x40 (TOTAL-FIXX)	6.00 mm	0,10 kN	200 pcs	0,86 kg	2 000 pcs	8713678701651

STEEL CAVITY PLUG HSD

The steel cavity plug is used for fastening hollow ceiling spaces. The steel cavity plug is automatically anchored when it is inserted into the hole. The installation is very simple without the need of any tools.



Order no.	Product no.	Article name	Dimension	Load	Packing	Carton	Weight	Bar code
TMD-0506-Z	1.348911 T	HSD - Steel cavity plug (hook)	M4x75mm	0,20 kN	25 pcs	0,40 kg	500 pcs	8590108600186
TMD-1290-Z	1.348912,1 T	HSD - Steel cavity plug (nut)	M4x75mm	0,20 kN	25 pcs	0,42 kg	600 pcs	8590108600155
TMD-0505-Z	1.348910 T	HSD - Steel cavity plug (eye)	M4x75mm	0,20 kN	25 pcs	0,40 kg	500 pcs	8590108600162
TMD-0507-Z	1.348912 T	HSD - Steel cavity plug (screw)	M4x75mm	0,20 kN	25 pcs	0,35 kg	600 pcs	8590108600179

STEEL CAVITY PLUG HOD

The steel cavity plug is used for mounting into the hollow materials. It is fitted by using a screwdriver or mounting pliers. It will not spin during the mounting due to the teeth on the rim.



Order no.	Product no.	Article name	Diameter	Thread	Load	Packing	Weight	Carton	Bar code
TMD-0502-Z	1.348900, T	HOS-S 08x21 M4 Steel cavity plug	8.00 mm	M4	0,25 kN	100 pcs	0,52 kg	2 400 pcs	8590108605020
TMD-0497-Z	1.348900,1T	HOS-S 08x32 M4 Steel cavity plug	8.00 mm	M4	0,25 kN	100 pcs	0,70 kg	2 400 pcs	8590108604009
TMD-0498-Z	1.348901 T	HOS-S 08x38 M4 Steel cavity plug	8.00 mm	M4	0,25 kN	100 pcs	0,78 kg	2 400 pcs	8590108600674
TMD-0503-Z	1.348901.1 T	HOS-S 08x54 M4 Steel cavity plug	8.00 mm	M4	0,25 kN	100 pcs	1,00 kg	2 400 pcs	8590108605037
TMD-0504-Z	1.348902.1 T	HOS-S 10x52 M5 Steel cavity plug	10.00 mm	M5	0,30 kN	50 pcs	0,82 kg	1 200 pcs	8590108600681
TMD-0499-Z	1.348902 T	HOS-S 10x65 M5 Steel cavity plug	10.00 mm	M5	0,30 kN	50 pcs	1,02 kg	1 200 pcs	8590108604016
TMD-0501-Z	1.348904 T	HOS-S 12x52 M6 Steel cavity plug	12.00 mm	M6	0,40 kN	50 pcs	1,10 kg	1 000 pcs	8590108600698
TMD-0500-Z	1.348903 T	HOS-S 12x65 M6 Steel cavity plug	12.00 mm	M6	0,40 kN	25 pcs	0,66 kg	600 pcs	8590108604023
TMD-3365-Z	1.348910.1	HOD-S Mounting pliers	-	-	-	1 pc	0,54 kg	-	-

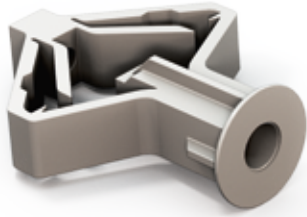
PLUG HPK

The plug is used in all types of building materials. It is produced from high quality material - Polyamide (nylon 6). The brass cone ensures reliable mounting (installation).



Order no.	Product no.	Article name	Diameter	Thread	Load	Packing	Weight	Carton	Bar code
TMD-0515-Z	1.348917.1 T	HPK 08x40 plug (hook)	8.00 mm	M4	0,20 kN	50 pcs	0,60 kg	1 200 pcs	8590108602791
TMD-0518-Z	1.348917.4 T	HPK 08x40 plug (hooked nail)	8.00 mm	M4	0,20 kN	50 pcs	0,48 kg	1 200 pcs	8590108602777
TMD-0516-Z	1.348917.2 T	HPK 08x40 plug (eye)	8.00 mm	M4	0,20 kN	50 pcs	0,68 kg	1 200 pcs	8590108602807
TMD-0517-Z	1.348917.3 T	HPK 08x40 plug (screw)	8.00 mm	M4	0,20 kN	50 pcs	0,48 kg	1 200 pcs	8590108602784

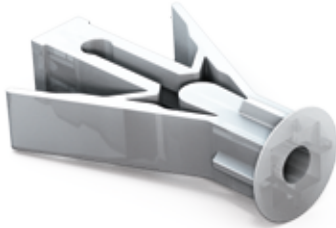
CAVITY PLUG FOR HOLLOW SPACE KEW



The cavity plug is used for mounting into the hollow materials. The length of the screw must always exceed the length of the plug with fastening materials

Order no.	Product no.	Article name	Diameter	Load	Packing	Weight	Carton	Bar code
TMD-0437-Z	1.348810 T	Cavity plug for hollow space - KHD 10	10 mm	0,43 kN	100 pcs	0,31 kg	800 pcs	4013211333894

CAVITY PLUG FOR HOLLOW SPACE



The cavity plug is used for mounting into the hollow materials. The length of the screw must always exceed the length of the plug with fastening materials.

Order no.	Product no.	Article name	Diameter	Wall	Load	Packing	Weight	Carton	Bar code
TMD-0438-Z	1.348811 T	Cavity plug for hollow space - KU 12	10 mm	4-12 mm	0,25 kN	100 pcs	0,26 kg	1 000 pcs	8590108601190
TMD-0439-Z	1.348812 T	Cavity plug for hollow space - KU 19	10 mm	13-19 mm	0,25 kN	100 pcs	0,30 kg	1 000 pcs	8590108601206

WORM PLUG

The special worm plug is used for drywall systems. It is cuted into the gypsum board by screwing without the need of any tools. The material is fixed into the plug by self-drilling or self-tapping screws.



Order no.	Product no.	Article name	Diameter	Load	Packing	Weight	Carton	Bar code
TMD-0441-Z	1.348813 T	Worm plug	7.00 mm	0,09 kN	100 pcs	0,14 kg	2 400 pcs	8590108403909
TMD-0442-Z	1.348814 T	Worm plug with tip	10.00 mm	0,15 kN	100 pcs	0,16 kg	10 500 pcs	8590108700909
TMD-0440-Z	1.348812.1 T	Worm plug with tip (metal)	10.00 mm	0,21 kN	100 pcs	0,48 kg	10 500 pcs	8590108401738

Notes



SCREWS



DRYWALL SCREW – FINE THREAD

The screw is used for mounting gypsum board into metal structure consisting of profiles with maximum thickness of 0.75 mm. It is produced in several length variations with a fine thread and phosphate surface.



Order no.	Product no.	Article name	Diameter	Packing	Weight	Carton	Pallet	Bar code
TMD-3788-Z	1,348815.3 E	Drywall screw excellent 3.5x25 - fine thread	3.5 mm	1 000 pcs	1,24 kg	18 000 pcs	432 000 pcs	8595136508428
TMD-3789-Z	1,348816.3 E	Drywall screw excellent 3.5x35 - fine thread	3.5 mm	1 000 pcs	1,64 kg	9 000 pcs	216 000 pcs	8595136508435
TMD-4553-Z	1,348815.1 T	Drywall screw 3.5x19 - fine thread	3.5 mm	1 000 pcs	1,00 kg	22 000 pcs	528 000 pcs	8595136508749
TMD-0447-Z	1,348815.3 T	Drywall screw 3.5x25 - fine thread	3.5 mm	1 000 pcs	1,24 kg	18 000 pcs	432 000 pcs	8595136508008
TMD-0456-Z	1,348816.3 T	Drywall screw 3.5x35 - fine thread	3.5 mm	1 000 pcs	1,64 kg	9 000 pcs	216 000 pcs	8595136508015
TMD-0459-Z	1,348817.3 T	Drywall screw 3.5x45 - fine thread	3.5 mm	1 000 pcs	2,16 kg	7 000 pcs	168 000 pcs	8595136508022
TMD-0462-Z	1,348818.3 T	Drywall screw 3.5x55 - fine thread	3.5 mm	500 pcs	1,34 kg	4 500 pcs	108 000 pcs	8595136508039
TMD-0463-Z	1,348819 T	Drywall screw 4.2x70 - fine thread	4.2 mm	500 pcs	2,04 kg	3 500 pcs	84 000 pcs	8595136508046
TMD-0924-Z	1,348819.2 T	Drywall screw 4.2x80 - fine thread	4.2 mm	200 pcs	0,94 kg	1 600 pcs	57 600 pcs	8595136508053
TMD-0465-Z	1,348820 T	Drywall screw 4.2x90 - fine thread	4.2 mm	200 pcs	1,08 kg	1 800 pcs	43 200 pcs	8595136508060

*Packaging per 100 pcs

Order no.	Product no.	Article name	Diameter	Packing	Weight	Carton	Pallet	Bar code
TMD-0445-Z	1,348814.3,1 T	Drywall screw 3.5x25 - fine thread (100 pc)	3.5 mm	100 pcs	0,12 kg	14 000 pcs	336 000 pcs	8595136508138
TMD-0454-Z	1,348814.3,3 T	Drywall screw 3.5x35 - fine thread (100 pc)	3.5 mm	100 pcs	0,18 kg	8 800 pcs	211 200 pcs	8595136508145
TMD-1339-Z	1,348814.3,4 T	Drywall screw 3.5x45 - fine thread (100 pc)	3.5 mm	100 pcs	0,22 kg	6 300 pcs	151 200 pcs	8595136508220
TMD-1340-Z	1,348814.3,5 T	Drywall screw 3.5x55 - fine thread (100 pc)	3.5 mm	100 pcs	0,28 kg	4 400 pcs	105 600 pcs	8595136508237

* Collated packaging

Order no.	Product no.	Article name	Diameter	Packing	Weight	Carton	Bar code
TMD-3492-Z	1,348820	Drywall screw 3.5x25 - fine thread (collated)	3.5 mm	1 000 pcs	1,50 kg	10 000 pcs	8595136508725
TMD-3493-Z	1,348820.35	Drywall screw 3.5x35 - fine thread (collated)	3.5 mm	1 000 pcs	1,93 kg	10 000 pcs	8595136508732
• TMD-3494-Z	1,348820.45	Drywall screw 3.5x45 - fine thread (collated)	3.5 mm	1 000 pcs	-	-	8595136504901
• TMD-3495-Z	1,348820.55	Drywall screw 3.5x55 - fine thread (collated)	3.5 mm	1 000 pcs	-	-	8595136504918

DRYWALL SCREW – COARSE THREAD

The screw is used for mounting gypsum board into wooden structure. It is produced in several length variations with a coarse thread and phosphate surface.



Order no.	Product no.	Article name	Diameter	Packing	Weight	Carton	Pallet	Bar code
TMD-0466-Z	1,348821 T	Drywall screw 3.5x35 - coarse thread	3.5 mm	1 000 pcs	1,62 kg	9 000 pcs	216 000 pcs	8595136508077
TMD-0470-Z	1,348822 T	Drywall screw 3.5x45 - coarse thread	3.5 mm	1 000 pcs	2,06 kg	7 000 pcs	168 000 pcs	8595136508084
TMD-0472-Z	1,348823 T	Drywall screw 3.5x55 - coarse thread	3.5 mm	500 pcs	1,32 kg	4 500 pcs	108 000 pcs	8595136508091
TMD-0473-Z	1,348824 T	Drywall screw 3.9x65 - coarse thread	3.9 mm	500 pcs	1,72 kg	3 500 pcs	84 000 pcs	8595136508107
TMD-0474-Z	1,348825 T	Drywall screw 4.2x75 - coarse thread	4.2 mm	200 pcs	2,16 kg	2 000 pcs	72 000 pcs	8595136508114
TMD-0475-Z	1,348826 T	Drywall screw 4.2x90 - coarse thread	4.2 mm	200 pcs	1,17 kg	1 800 pcs	43 200 pcs	8595136508121
TMD-2432-Z	1,348829,9 T	Drywall screw 5.5x38 - GKB+GKB (coarse thread)	5.5 mm	1 000 pcs	3,65 kg	-	-	4019786274068

*Packaging per 100 pcs

Order no.	Product no.	Article name	Diameter	Packing	Weight	Carton	Pallet	Bar code
TMD-0467-Z	1,348821.1 T	Drywall screw 3.5x35 - coarse thread (100 pc)	3.5 mm	100 pcs	0,16 kg	8 800 pcs	211 200 pcs	8595136508244
TMD-0471-Z	1,348821.1.2 T	Drywall screw 3.5x45 - coarse thread (100 pc)	3.5 mm	100 pcs	0,22 kg	6 300 pcs	151 200 pcs	8595136508251
TMD-0889-Z	1,348821.1.3 T	Drywall screw 3.5x55 - coarse thread (100 pc)	3.5 mm	100 pcs	0,26 kg	4 400 pcs	105 600 pcs	8595136508268

* Collated packaging

Order no.	Product no.	Article name	Diameter	Packing	Weight	Carton	Bar code
• TMD-3496-Z	1,348821.35	Drywall screw 3.8x35 - coarse thread (collated)	3.5 mm	1 000 pcs	0,16 kg	10 000 pcs	211 200 ks

FLAT HEAD SCREW WITH COARSE THREAD



The screw is used for mounting of metal drywall accesories into the wooden structure. It is produced in several length variations with a coarse thread, flat head and phosphate surface.

Order no.	Product no.	Article name	Diameter	Packing	Weight	Carton	Pallet	Bar code
TMD-3724-Z	1.348827.14 T	Flat head screw 4.2x35 - coarse thread	4.2 mm	1 000 pcs	1,55 kg	-	-	-
TMD-0476-Z	1.348827 T	Flat head screw 4.2x45 - coarse thread	4.2 mm	500 pcs	1,32 kg	7 000 pcs	168 000 pcs	8595136508152
TMD-0482-Z	1.348828 T	Flat head screw 4.2x55 - coarse thread	4.2 mm	500 pcs	1,50 kg	4 500 pcs	108 000 pcs	8595136508169
TMD-0483-Z	1.348829 T	Flat head screw 4.2x55 - coarse thread	4.2 mm	500 pcs	1,94 kg	3 500 pcs	84 000 pcs	8595136508176

*Packaging per 100 pcs

Order no.	Product no.	Article name	Diameter	Packing	Weight	Carton	Pallet	Bar code
TMD-4379-Z	1.348827.01 T	Flat head screw 4.2x35 - coarse thread	4.2 mm	100 pcs	0,28 kg	6 300 pcs	151 200 pcs	8595136508664
TMD-4380-Z	1.348828.02 T	Flat head screw 4.2x45 - coarse thread	4.2 mm	100 pcs	0,34 kg	4 400 pcs	105 600 pcs	8595136508671
TMD-4381-Z	1.348829.03 T	Flat head screw 4.2x55 - coarse thread	4.2 mm	100 pcs	0,41 kg	3 300 pcs	79 200 pcs	8595136508688

DRYWALL SCREW – SELF DRILLING



The screw is used for mounting gypsum board into metal structure consisting of profiles with thickness of 2.00 mm. It is produced in several length variations with a fine thread and phosphate surface.

Order no.	Product no.	Article name	Diameter	Packing	Weight	Carton	Pallet	Bar code
TMD-0484-Z	1.348830 T	Drywall screw TB 25 - self drilling	3.5 mm	1 000 pcs	1,44 kg	16 000 pcs	384 000 pcs	8595136508183
TMD-0485-Z	1.348831 T	Drywall screw TB 35 - self drilling	3.5 mm	1 000 pcs	1,94 kg	9 000 pcs	216 000 pcs	8595136508190
TMD-0486-Z	1.348832 T	Drywall screw TB 45 - self drilling	3.5 mm	1 000 pcs	2,36 kg	7 000 pcs	168 000 pcs	8595136508206
TMD-0487-Z	1.348832.1 T	Drywall screw TB 55 - self drilling	3.5 mm	1 000 pcs	2,92 kg	4 000 pcs	96 000 pcs	8595136508213

SELF-DRILLING SCREW



The screw is used for a mutual connection of metal elements in drywall constructions. It is made from galvanized steel with drilling tip for easy mounting.

Order no.	Product no.	Article name	Diameter	Packing	Weight	Carton	Pallet	Bar code
TMD-0490-Z	1.348834 T	Self-drilling screw TEX 3.5x9.5	3.5 mm	1 000 pcs	0,08 kg	28 000 pcs	1 008 000 pcs	8595136508282
TMD-0491-Z	1.348835 T	Self-drilling screw TEX 4.2x13	4.2 mm	1 000 pcs	1,42 kg	13 000 pcs	-	8595136508299
TMD-0493-Z	1.348836 T	Self-drilling screw TEX 4.2x16	4.2 mm	1 000 pcs	1,58 kg	12 000 pcs	-	8595136508305
TMD-0495-Z	1.348837 T	Self-drilling screw TEX 4.2x19	4.2 mm	1 000 pcs	1,84 kg	9 000 pcs	-	8595136508312

*Packaging per 100 pcs

Order no.	Product no.	Article name	Diameter	Packing	Weight	Carton	Pallet	Bar code
TMD-0489-Z	1.348833 T	Self-drilling screw TEX 3.5x9.5 (100 pc)	3.5 mm	100 pcs	0,76 kg	23 000 pcs	552 000 pcs	8595136508275

SELF-DRILLING SCREW WITH FLAT HEAD

The screw is used for a mutual connection of metal elements in drywall constructions. It is made from galvanized steel with drilling tip for easy mounting and flat head.



Order no.	Product no.	Article name	Diameter	Packing	Weight	Carton
TMD-1651-Z	1.348827.3 T	Self drilling screw TEX 4.2x13 – flat head	4.2 mm	1 000 pcs	1,58 kg	13 000 pcs

*Packaging per 100 pcs

Order no.	Product no.	Article name	Diameter	Packing	Carton	Weight	Bar code
TMD-4121-Z	1.348827.3.1 T	Self drilling screw TEX 4.2x13 – flat head (100 pc)	4.2 mm	100 pcs	14 500 pcs	0,159 kg	8595136508572

SELF-DRILLING SCREW SHARP

The screw is used for a mutual connection of metal elements in drywall constructions. It is made from steel with tip for easy mounting and phosphate surface.



Order no.	Product no.	Article name	Diameter	Packing	Weight	Carton	Pallet	Bar code
TMD-3387-Z	1.348827.11 LN	Self drilling screw 3.5x11 - Sharp	3.5 mm	1 000 pcs	1,00 kg	20 000 pcs	720 000 pcs	8595136504925

*Packaging per 100 pcs

Order no.	Product no.	Article name	Diameter	Packing	Weight	Carton	Pallet	Bar code
TMD-4774-Z	1.348827.111 LN	Self drilling screw 3.5x11 - Sharp (100 pc)	3.5 mm	100 pcs	0,11 kg	23 000 pcs	828 200 pcs	8595136508756

WOOD SCREW CETRIS

The wood screw is used for mounting of cement-splinter boards into a construction. It is produced in several lengths with hi-low thread.



Order no.	Product no.	Article name	Diameter	Packing	Carton	Weight
TMD-0448-Z	1.348839.2 T	Wood screw 4.2x25 - cetriz	4.2 mm	1 000 pcs	6 000 pcs	1,60 kg
TMD-0450-Z	1.348839.3 T	Wood screw 4.2x35 - cetriz	4.2 mm	1 000 pcs	6 000 pcs	2,30 kg
TMD-0451-Z	1.348839.4 T	Wood screw 4.2x45 - cetriz	4.2 mm	500 pcs	3 000 pcs	1,42 kg
TMD-0452-Z	1.348839.5 T	Wood screw 4.2x55 - cetriz	4.2 mm	500 pcs	3 000 pcs	1,73 kg

Notes



BINDERS

ROKOPLAST

The Rokoplast is powder joint sealer designed for the preparation of binder which is used for filling the cracks and joints between the gypsum boards. It stands out thanks to its high strength, low density, excellent workability and comfortable application. It is designed for indoor usage and it is not suitable for permanently wet and humid environment.



Order no.	Product no.	Article name	Packing	Weight	Pallet	Bar code
TMD-0329-Z	1.348651,5 T	Rokoplast - 2 kg	1 pc	2 kg	200 pcs	8595088810310
TMD-0320-Z	1.348652 T	Rokoplast - 5 kg	1 pc	5 kg	160 pcs	8595088810211
TMD-0322-Z	1.348653 T	Rokoplast - 20 kg	1 pc	20 kg	42 pcs	8595088810112

ROKOFINAL

Pasty building material intended for thin-final finishing of drywall constructions. It consists of fine-grained mineral fillers, special binders cultivates, additives and water. It is applied in a thickness up to 1 mm in one step designed for interior use. Paste is not suitable for permanently damp and wet environments.



Order no.	Product no.	Article name	Packing	Weight	Carton	Pallet	Bar code
TMD-4771-Z	TMD-4771-Z	Rokofinal - 1.5 kg	1 pc	1,5 kg	12 pcs	-	8595088815018
TMD-0318-Z	1.348650 T	Rokofinal - 5 kg	1 pc	5 kg	-	100 pcs	8595088811218
TMD-0319-Z	1.348651 T	Rokofinal - 15 kg	1 pc	15 kg	-	39 pcs	8595088811317

UNIFLOT

The powdered binder intended for making filler putty joints between gypsum boards. It is also used to compensate for uneven surfaces. Designed for indoor environment only and not suitable for permanently wet and humid environments.



Order no.	Product no.	Article name	Packing	Weight	Pallet	Bar code
TMD-0326-Z	1.348656 T	Uniflott - 5 kg	1 pc	5 kg	42 pcs	4003982245694
TMD-0325-Z	1.348657 T	Uniflott - 25 kg	1 pc	25 kg	200 pcs	4003982245687

ADHESIVE TRIM-TEX

The adhesive is used for gluing plastic dilatation profiles to gypsum boards in drywall systems. It comes as a spray in a 454 g package.



Order no.	Product no.	Article name	Packing	Weight	Carton	Bar code
TMD-1001-Z	1.348509,4,2 T	Adhesive TRIM-TEX (spray)	1 pc	0,25 kg	12 pcs	726372008498

ACRYL BINDER

The sealant intended for filling joints between window frames, doors and masonry, corner joints in drywall constructions, partition walls, chipboard and wood braces. The acrylic sealant is paintable after aging. During maturation the acrylic sealant lightly forfeits and creates the typical coves. The expansion joints can absorb up to 12.5% of the movement.



Order no.	Product no.	Article name	Packing	Weight	Carton	Bar code
TMD-0327-Z	1.348658 T	Acryl binder	1 pc	0,58 kg	25 pcs	8595169212231

TAPES



FIBERGLASS TAPE

The tape is designed for the creation of an exterior and interior corners, gaps, joints and also for connection of the incurred gaps in drywall construction. It strengthens already filled joints of the gypsum boards and prevents further formation of visible cracks. The advantage of the fiberglass is sandability and recoatability of this material.



Order no.	Product no.	Article name	Width	Length	Packing	Weight	Carton	Pallet	Bar code
TMD-0289-Z	1.348600 T	Fiberglass tape 25 m	50 mm	25 m	1 pc	1,70 kg	48 pcs	1 248 pcs	8590930580113

MESH ADHESIVE TAPE

The reinforcing tape is designed to create internal and external corner joints in dry-wall structures. It strengthens already filled joints of the gypsum boards and prevents further formation of visible cracks in single and double constructions, ceilings and attic sheathing. The carrier is a fiberglass grid provided with an acrylic adhesive.



Order no.	Product no.	Article name	Width	Length	Packing	Carton	Weight	Bar code
TMD-0290-Z	1.348601 T	Mesh adhesive tape - 20 m	50 mm	20 m	1 pc	72 pcs	4,32 kg	8595573512590
TMD-0291-Z	1.348601.1T	Mesh adhesive tape - 45 m	50 mm	45 m	1 pc	54 pcs	7,56 kg	8595573512606
TMD-0292-Z	1.348602 T	Mesh adhesive tape - 90 m	50 mm	90 m	1 pc	24 pcs	5,76 kg	8595244816279
TMD-0293-Z	1.348602.1T	Mesh adhesive tape - 153 m	50 mm	153 m	1 pc	16 pcs	6,08 kg	8595244816286

MESH ADHESIVE TAPE FIBA

The reinforcing tape is designed to create internal and external corner joints in dry-wall structures. It strengthens already filled joints of the gypsum boards and prevents further formation of visible cracks in single and double constructions, ceilings and attic sheathing. The carrier is a fiberglass grid provided with an acrylic adhesive.



Order no.	Product no.	Article name	Width	Length	Packing	Carton	Weight	Pallet	Bar code
TMD-0294-Z	1.348602.2T	Mesh adhesive tape - 20 m (FIBA TAPE)	48 mm	20 m	1 pc	24 pcs	1,92 kg	1 440 pcs	8590930580069
TMD-0295-Z	1.348602.3T	Mesh adhesive tape - 45 m (FIBA TAPE)	48 mm	45 m	1 pc	24 pcs	3,36 kg	960 pcs	8590930580076
TMD-0296-Z	1.348602.4T	Mesh adhesive tape - 90 m (FIBA TAPE)	48 mm	90 m	1 pc	24 pcs	7,20 kg	980 pcs	8590930580083
TMD-1006-Z	1.348602.5	Mesh adhesive tape - 153 m (FIBA TAPE)	48 mm	153 m	1 pc	12 pcs	6,24 kg	280 pcs	8590930580090

FOAM RUBBER SEAL TAPE

The tape is manufactured from PE foam, laminated with silicone separation foil on one side and deposited with polyacrylate layer dispersion on the other. The adhesive secure high stickiness to each supporting material. It is mainly used as a foam sealant for drywall, metal profiles UW and UD or for facade board and metal construction with purpose of reducing the vibrations.



Order no.	Product no.	Article name	Width	Length	Packing	Carton	Weight	Pallet	Bar code
TMD-4273-Z	1.348603 S	Foam rubber seal tape 25 mm x 30 m	25 mm	30 m	1 pc	38 ks	6,72 kg	456 pcs	8595136508701
TMD-0297-Z	1.348603 T	Foam rubber seal tape 30 mm x 30 m	30 mm	30 m	1 pc	32 ks	6,30 kg	384 pcs	8595136508497
TMD-0298-Z	1.348604 T	Foam rubber seal tape 45 mm x 30 m	45 mm	30 m	1 pc	20 ks	6,44 kg	240 pcs	8595136508503
TMD-0299-Z	1.348605 T	Foam rubber seal tape 65 mm x 30 m	65 mm	30 m	1 pc	14 ks	5,12 kg	168 pcs	8595136508510
TMD-0300-Z	1.348606 T	Foam rubber seal tape 90 mm x 30 m	90 mm	30 m	1 pc	10 ks	5,06 kg	120 pcs	8595136508527

STRAITFLEX TAPE



The Straitflex is a comprehensive series of reinforcing and sealing tapes designed especially for covering all joints in gypsum boards to prevent the formation of cracks. A unique advantage is the water resistance and easy mold ability.

Original - a professional solution for connecting walls and ceilings.

Medium - perforation edges of the tape provides up to 30% greater bonding strength than the design without holes. Intended primarily for builders without previous experience with reinforced tape.

Tuff-tape - extremely resistant to moisture and is therefore suitable for use in bathrooms and other places where other tapes might be disrupted by water. The tape is also extremely thin allowing to be used in places where other insulating tapes would not be appropriate.

Order no.	Product no.	Article name	Width	Length	Packing	Carton	Weight	Bar code
TMD-3867-Z	1.348509.7 M	Straitflex tape (Medium)	57 mm	30 m	1 pc	12 pcs	11,40 kg	5907437026052
TMD-2955-Z	1.348509.7 O	Straitflex tape (Original)	61 mm	30 m	1 pc	12 pcs	13,20 kg	5907937026090
TMD-4914-Z	TMD-4914-Z	Straitflex tape (Tuff-tape)	57 mm	30 m	1 pc	12 pcs	8,20 kg	8588005642125
TMD-5119-Z	TMD-5119-Z	Straitflex tape (Medium)	57 mm	10 m	1 pc	27 pcs	3,80 kg	5907437026021
TMD-5118-Z	TMD-5118-Z	Straitflex tape (Original)	61 mm	10 m	1 pc	27 pcs	4,40 kg	5907437026069
TMD-5120-Z	TMD-5120-Z	Straitflex tape (Tuff-tape)	57 mm	10 m	1 pc	27 pcs	2,73 kg	5907437026205



ALUX TAPE

Paper tape with the metal layer is intended for reinforcing the inner and outer corners in drywall structures. This creates a high strength bond which reduces the formation of cracks.

Order no.	Product no.	Article name	Width	Length	Packing	Carton	Weight	Bar code
TMD-0271-Z	1.348509.5 T	Alux tape - paper + steel	50 mm	30 m	1 pc	10 pcs	1,40 kg	8595136508718



ALUMINUM TAPE

The tape is used to wrap the perfect thermal insulation on hot water lines, the endless linking of aluminum foil and serve also as a good vapor barrier. The tape is flame resistant and resists most chemicals which means the possibility of long-term use indoors and outdoors.

Order no.	Product no.	Article name	Width	Length	Packing	Carton	Weight
TMD-0303-Z	1.348606.3 T	Alu tape 050 mm x 50 m (aluminum)	50 mm	50 m	1 pcs	24 pcs	8,64 kg
TMD-0301-Z	1.348606.1T	Alu tape 050 mm x 50 m (metalized)	50 mm	50 m	1 pcs	96 pcs	11,52 kg
TMD-0302-Z	1.348606.2T	Alu tape 050 mm x 100 m (metalized)	50 mm	100 m	1 pcs	54 pcs	12,96 kg
TMD-0748-Z	1.348606.4T	Alu tape 100 mm x 50 m (metalized)	100 mm	50 m	1 pcs	48 pcs	12,00 kg

PAPER TAPE



The tape is used for surface protection in construction and industry, varnishing or painting work and from mechanical damage. Adhesion to most materials and resistance to thermal shock, paints and solvents is a big advantage. The tape must be removed within 24 hours after gluing due to adhesive clinging on the surface.

Order no.	Product no.	Article name	Width	Length	Packing	Carton	Weight
TMD-0304-Z	1.348607 T	Paper tape 30 mm x 50 m	30 mm	50 m	1 pcs	36 pcs	5,04 kg
TMD-0306-Z	1.348608 T	Paper tape 38 mm x 50 m	38 mm	50 m	1 pcs	24 pcs	3,91 kg
TMD-0307-Z	1.348608.12T	Paper tape 50 mm x 50 m	50 mm	50 m	1 pcs	24 pcs	5,47 kg

MASKING TAPE

The tape is used to protect wood and metal surfaces in construction and industry, varnishing, painting and plastering work. Adhesion to most materials and resistance to thermal shock, paints and solvents is a big advantage. The tape must be removed within 7 days after gluing due to adhesive clinging on the surface.



Order no.	Product no.	Article name	Width	Length	Packing	Carton	Weight
TMD-0305-Z	1.348608.1 T	Masking tape 30 mm x 33 m (UV resistant)	30 mm	33 m	1 pc	60 pcs	12,00 kg
TMD-0308-Z	1.348608.2 T	Masking tape 38 mm x 33 m (UV resistant)	38 mm	33 m	1 pc	48 pcs	10,56 kg
TMD-0309-Z	1.348608.3 T	Masking tape 48 mm x 33 m (UV resistant)	48 mm	33 m	1 pc	36 pcs	9,36 kg

DOUBLE SIDE ADHESIVE TAPE

The tape is used for a variety of mounting works of decorative objects, warning and information signs, fixing prefabricated objects and other applications. Double-sided adhesive tapes are very thin, perfectly transparent and adhesive to various surfaces.



Order no.	Product no.	Article name	Width	Length	Packing	Weight	Carton
TMD-0315-Z	1.348615 T	Double side adhesive tape 25 mm x 25 m	25 mm	25 m	1 pc	10,08 kg	72 pcs
TMD-0314-Z	1.348614 T	Double side adhesive tape 25 mm x 50 m	25 mm	50 m	1 pc	15,84 kg	72 pcs
TMD-0313-Z	1.348611 T	Double side adhesive tape 50 mm x 25 m	50 mm	25 m	1 pc	9,36 kg	36 pcs
TMD-0312-Z	1.348610 T	Double side adhesive tape 50 mm x 50 m	50 mm	50 m	1 pc	18,72 kg	36 pcs

VAPOR BARRIER TAPE

The tape is waterproof, airtight and moreover excels in durability. Because it is flexible it can be used also in places where building structures undergoing expansion joint. Polyacrylate adhesive glue is moisture-proof, extremely high initial and durable adhesion.



Order no.	Product no.	Article name	Width	Length	Packing	Weight	Carton	Bar code
TMD-4416-Z	1.348606.6 T	Vapor barrier tape 50 mm x 25 m	50 mm	25 m	1 pc	0,69 kg	12 pcs	8595140125109

ADHESIVE TAPE

One side wrapping tape is made of polypropylene material with a layer of acrylic adhesive. The tape is waterproof and designed for conventional hand and machine packaging.



Order no.	Product no.	Article name	Width	Length	Packing	Weight	Carton
TMD-0311-Z	1.348619.01 T	Adhesive tape – brown	48 mm	60 m	1 pc	0,13 kg	36 pcs
TMD-0956-Z	1.348619.1 T	Adhesive tape – transparent	48 mm	50 m	1 pc	0,13 kg	36 pcs



LATHS

ALU LATH 90°

Aluminum lath is intended for the reinforcement of 90° corners. They are made by pressing of aluminum tape in different lengths and thicknesses.

- For mounting into drywall constructions to reinforce and protect the corners of walls and window linings against damage, it is necessary to use certificated variant in thickness of 0,40 mm with CE labeling.



Order no.	Product no.	Article name	Thickness	Width	Bundle	Weight	Carton	Pallet	Bar code
TMD-0252-Z	1.348500 T	Alu lath 90° - 2.0 m	0.30 mm	23 x 23 mm	50 pcs	2,60 kg	200 pcs	8 800 pcs	8595136503355
TMD-0253-Z	1.348501 T	Alu lath 90° - 2.5 m	0.30 mm	23 x 23 mm	50 pcs	3,25 kg	200 pcs	8 800 pcs	8595136503362
TMD-0254-Z	1.348502 T	Alu lath 90° - 3.0 m	0.30 mm	23 x 23 mm	50 pcs	3,90 kg	200 pcs	8 800 pcs	8595136503379

ALU FINISHING LATH

Aluminum lath is intended for finishing of 90° corners. They are made by pressing of aluminum tape in different lengths.

- For mounting into drywall constructions to reinforce and protect the corners of walls and window linings against damage, it is necessary to use certificated variant in thickness of 0,40 mm with CE labeling.



Order no.	Product no.	Article name	Thickness	Width	Bundle	Weight	Carton	Pallet	Bar code
TMD-0257-Z	1.348504 T	Alu lath finishing - 2.5 m	0.30 mm	13 x 24 mm	50 pcs	3,00 kg	200 pcs	8 800 pcs	8595136503386
TMD-0260-Z	1.348504,3 T	Alu lath finishing - 3.0 m	0.30 mm	13 x 24 mm	50 pcs	3,60 kg	200 pcs	8 800 pcs	8595136508817

ALU LATH 135°

Aluminum lath is intended for the reinforcement of obtuse corners. They are made by pressing of aluminum tape in different lengths.

- For mounting into drywall constructions to reinforce and protect the corners of walls and window linings against damage, it is necessary to use certificated variant in thickness of 0,40 mm with CE labeling.



Order no.	Product no.	Article name	Thickness	Width	Bundle	Weight	Carton	Pallet	Bar code
TMD-0256-Z	1.348503.1 T	Alu lath 135° - 2.5 m	0.30 mm	23 x 23 mm	50 pcs	3,25 kg	150 pcs	8 800 pcs	8595136508800
TMD-0255-Z	1.348503 T	Alu lath 135° - 3.0 m	0.30 mm	23 x 23 mm	50 pcs	3,90 kg	150 pcs	8 800 pcs	8595136500637

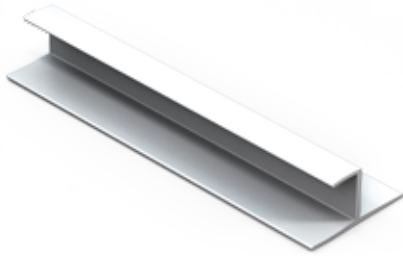
PVC FINISHING PROFILE

Plastic lath designed for installation in a drywall construction. It is used to clean and protect gypsum boards against damage.



Order no.	Product no.	Article name	Board	Bundle	Weight	Carton	Pallet
TMD-0258-Z	1.348504.1 T	PVC finishing profile 09.5 - 2.5 m	9.5 mm	10 pcs	1,33 kg	50 pcs	1 250 pcs
TMD-0259-Z	1.348504.2 T	PVC finishing profile 09.5 - 3.0 m	9.5 mm	10 pcs	1,59 kg	50 pcs	1 250 pcs
TMD-0262-Z	1.348505 T	PVC finishing profile 12.5 - 2.5 m	12.5 mm	10 pcs	1,38 kg	50 pcs	1 250 pcs
TMD-0263-Z	1.348506 T	PVC finishing profile 12.5 - 3.0 m	12.5 mm	10 pcs	1,65 kg	50 pcs	1 250 pcs
TMD-0264-Z	1.348507 T	PVC finishing profile 15.0 - 2.5 m	15.0 mm	10 pcs	1,78 kg	50 pcs	1 250 pcs
TMD-0265-Z	1.348508 T	PVC finishing profile 15.0 - 3.0 m	15.0 mm	10 pcs	2,08 kg	50 pcs	1 250 pcs

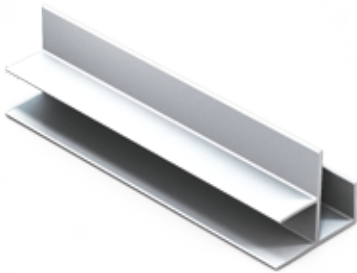
PVC FINISHING PROFILE „h“



Plastic lath designed for installation in a drywall construction. It is used for clean connection and protection of gypsum boards against damage.

Order no.	Product no.	Article name	Length	Bundle	Weight
TMD-0268-Z	1.348509.2 T	PVC finishing profile "h" - 2.5 m	2.5 m	25 pcs	7,00 kg

PVC FINISHING PROFILE „F“



Plastic lath designed for installation in a drywall construction. It is used to clean and protect gypsum boards against damage.

Order no.	Product no.	Article name	Length	Bundle	Weight
TMD-0272-Z	1.348509.2,1 T	PVC finishing profile „F“ - 2.5 m	2.5 m	10 pcs	3,80 kg

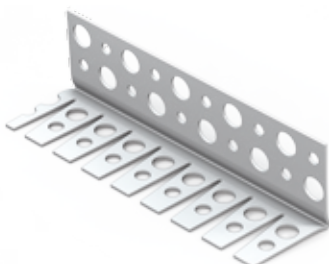
PVC FLEXIBLE EDGE GUARD FULL



Flexible plastic profile is designed for straight or curved outer edges and is only used in case of total or patching plaster application.

Order no.	Product no.	Article name	Length	Bundle	Weight
TMD-0269-Z	1.348509,1 T	PVC flexible edge guard full - 2.5 m	2.5 m	40 pcs	4,00 kg

PVC FLEXIBLE EDGE GUARD



Flexible plastic strip for protection of arch edges in drywall constructions.

Order no.	Product no.	Article name	Length	Bundle	Weight	Carton	Pallet	Bar code
TMD-0266-Z	1.348509 T	PVC flexible edge guard 30x34 mm - 3.0 m	3.0 m	50 pcs	12,15 kg	50 pcs	1 500 pcs	8595136508541

INSULATION



ALU CORNER WITH MESH

The profile is designed to reinforce and protect all edges, windows or doors corners in thermal insulation system. It is produced by molding aluminum strip in a variety of lengths and then gluing the glass fiber mesh imprinted with „Vertex“ or without him.



Order no.	Product no.	Article name	Mesh	Length	Packing	Weight	Pallet	Bar code
TMD-1795-Z	3.1068	Alu corner + mesh - 2.5 m (Hobby)	100 x 100 mm	2.5 m	50 pcs	7,13 kg	2000 pcs	8595136508787
TMD-1646-Z	3.1067	Alu corner + mesh - 2.0 m (Vertex)	100 x 100 mm	2.0 m	50 pcs	5,70 kg	2000 pcs	-
TMD-3191-Z	3.1068 V	Alu corner + mesh - 2.5 m (Vertex)	100 x 100 mm	2.5 m	50 pcs	8,55 kg	2000 pcs	8595136508794

PVC CORNER WITH MESH

The profile is designed to reinforce and protect all edges, windows or doors corners in thermal insulation system. It is produced by molding PVC strip in a variety of lengths and then gluing the glass fiber mesh imprinted with „Vertex“ or without him.



Order no.	Product no.	Article name	Mesh	Length	Packing	Weight	Pallet	Bar code
TMD-0287-Z	3.1063	PVC corner + mesh - 2.5 m (Hobby)	100 x 100 mm	2.5 m	50 pcs	11,00 kg	2 000 pcs	8595136508916
TMD-3755-Z	3.1062 V	PVC corner + mesh - 2.0 m (Vertex)	100 x 100 mm	2.0 m	50 pcs	8,80 kg	2 000 pcs	8595136508902
TMD-3190-Z	3.1063 V	PVC corner + mesh - 2.5 m (Vertex)	100 x 100 mm	2.5 m	50 pcs	11,00 kg	2 000 pcs	8595136508923

PVC WINDOW PROFILE

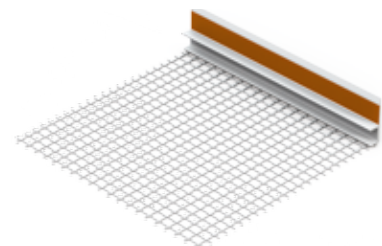
The window profile creates an expansion joint between plaster and frames of building openings. When used correctly it will not pollute the frames during plaster application. It is made of PVC material and double-sided tape for easy installation. Profile consists also of side plate which can be used to stick the protective film and tear off after application.



Order no.	Product no.	Article name	Thickness	Length	Packing	Weight	Pallet	Bar code
TMD-2848-Z	3.1225 BM	PVC window profile - 2.4 m	6.0 mm	2.4 m	30 pcs	2,59 kg	3 000 pcs	8595136508879

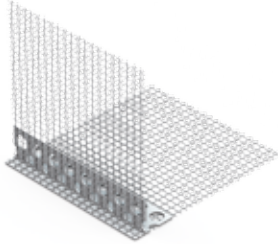
PVC WINDOW PROFILE WITH MESH

The window profile creates an expansion joint between plaster and frames of building openings in thermal insulation systems. When used correctly it will not pollute the frames during plaster application. It is made of PVC material, glass fiber mesh and double-sided tape for easy installation. Profile consists also of side plate which can be used to stick the protective film and tear off after application.



Order no.	Product no.	Article name	Thickness	Length	Packing	Weight	Pallet	Bar code
TMD-1649-Z	3.1225	PVC window profile + mesh 6 mm - 2.4 m	6.0 mm	2.4 m	50 pcs	7,32 kg	1 500 pcs	8595136508886
TMD-2490-Z	3.1225,5	PVC window profile + mesh 9 mm - 2.4 m	9.0 mm	2.4 m	50 pcs	8,28 kg	1 500 pcs	8595136508893

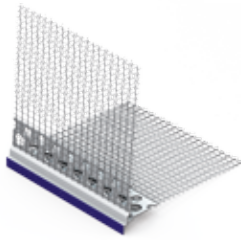
PVC LT WINDOW PROFILE WITH MESH



The profile with under drip is used for clean finish of the window edge in the thermal insulation system. This variant has hidden eaves strip and ensures dripping of water in the vertical direction which prevents the wicking of water into the structure. It is made of PVC material and glued glass fiber grid.

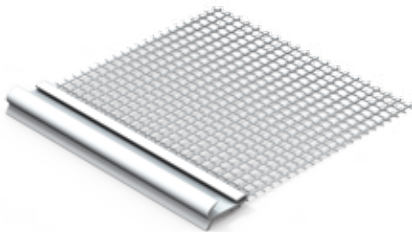
Order no.	Product no.	Article name	Mesh	Length	Packing	Weight	Pallet	Bar code
TMD-2489-Z	3.1231	PVC LT window profile + mesh - 2.0 m	100 x 100 mm	2.0 m	20 pcs	3,68 kg	1 200 pcs	8595136508855

PVC VLT WINDOW PROFILE WITH MESH



The profile with under drip is used for clean finish of the window edge in the thermal insulation system. This variant has visible eaves strip and ensures dripping of water in the vertical direction which prevents the wicking of water into the structure. It is made of PVC material and glued glass fiber grid.

Order no.	Product no.	Article name	Mesh	Length	Packing	Weight	Pallet	Bar code
TMD-1648-Z	3.1220	PVC VLT window profile + mesh- 2.5 m	100 x 100 mm	2.5 m	20 pcs	0,63 kg	2 000 pcs	8595136508930



PVC CLIP FOR BASE PROFILE WITH MESH

The profile will allow perfect finish of the plaster in the lower part of the thermal insulation system. Easy mechanical assembly over the joints of base profiles creates solid connection. This minimizes the formation of cracks and increases the quality and durability of the structure. It is made of PVC and glass fiber grid.

Order no.	Product no.	Article name	Mesh	Length	Packing	Weight	Pallet	Bar code
TMD-4258-Z	3.1216	PVC LTO clip for base profile + mesh - 2.5 m	100 mm	2.0 m	30 pcs	4,56 kg	1 200 pcs	8595136508862



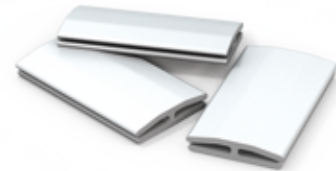
PVC MOVEMENT BEAD

Dilatation profile allows connecting the various areas of thermal insulation composite system admitting the gap. Quality connection will protect the expansion joints against the weather.

Order no.	Product no.	Article name	Length	Packing	Weight
TMD-4260-Z	3.1236	PVC movement bead straight - 2.0 m	2.0 m	25 pcs	9,90 kg
TMD-4261-Z	3.1237	PVC movement bead corner - 2.0 m	2.0 m	25 pcs	5,90 kg

CONNECTOR FOR BASE PROFILE

The coupling serves to connect the two base profiles in the thermal insulation system. It is made from PVC material in length of 30 mm. Connector helps mounting the profiles not only lengthwise but also in the corners.



Order no.	Product no.	Article name	Length	Packing	Weight	Carton	Bar code
TMD-1642-Z	3.1210	Section connector for base profile - 30 mm	30 mm	100 pcs	0,20 kg	1 600 pcs	4013211367196

BASE PROFILE CHOCK

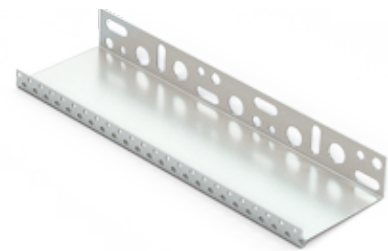
The washer is used to compensate for uneven walls and clearance during mounting of base profiles in the thermal insulation system. Pads can be stack together and thus achieve greater compensations. It is made from PVC material and in several thickness variants. Anchoring is done using nail plugs into the prepared hole.



Order no.	Product no.	Article name	Thickness	Packing	Weight	Carton	Bar code
TMD-1643-Z	3.1211	Plastic chock for base profiles - 03 mm	3 mm	50 pcs	0,15 kg	1 200 pcs	4013211335782
TMD-1644-Z	3.1212	Plastic chock for base profiles - 05 mm	5 mm	50 pcs	0,20 kg	800 pcs	4013211335799
TMD-1851-Z	3.1214	Plastic chock for base profiles - 08 mm	8 mm	50 pcs	0,25 kg	600 pcs	4013211335805
TMD-1645-Z	3.1213	Plastic chock for base profiles - 10 mm	10 mm	50 pcs	0,50 kg	500 pcs	4013211335812

BASE PROFILE

Aluminium profile for a horizontal foundation of insulation boards in thermal insulation system. Drip edge which guarantees draining the water vertically and prevents the rise of water into the structure is a part of the profile. Another important function is to protect the underside of the system against mechanical damage. It is made by pressing an aluminum strip in a variety of widths.



Order no.	Product no.	Article name	Thickness	Width	Length	Bundle	Weight	Pallet	Bar code
TMD-1633-Z	3.1082	Base profile 020	0.60 mm	20 mm	2.0 m	10 pcs	1,92 kg	2 000 pcs	8595136508947
TMD-1634-Z	3.1083	Base profile 030	0.60 mm	30 mm	2.0 m	10 pcs	2,24 kg	1 500 pcs	8595136508954
TMD-1635-Z	3.1084	Base profile 040	0.60 mm	40 mm	2.0 m	10 pcs	2,56 kg	1 500 pcs	8595136508961
TMD-1636-Z	3.1085	Base profile 050	0.60 mm	50 mm	2.0 m	10 pcs	2,86 kg	1 250 pcs	8595136508978
TMD-1637-Z	3.1086	Base profile 060	0.60 mm	60 mm	2.0 m	10 pcs	3,18 kg	1 000 pcs	8595136508985
TMD-1638-Z	3.1087	Base profile 070	0.60 mm	70 mm	2.0 m	10 pcs	3,40 kg	900 pcs	8595136508992
TMD-1639-Z	3.1088	Base profile 080	0.60 mm	80 mm	2.0 m	10 pcs	3,82 kg	800 pcs	8595136509005
TMD-1640-Z	3.1110	Base profile 100	0.70 mm	100 mm	2.0 m	10 pcs	5,22 kg	600 pcs	8595136509012
TMD-1641-Z	3.1112	Base profile 120	0.70 mm	120 mm	2.0 m	10 pcs	5,96 kg	500 pcs	8595136509029
TMD-1629-Z	3.1144	Base profile 140	1.00 mm	140 mm	2.0 m	10 pcs	8,48 kg	450 pcs	8595136509036
TMD-4281-Z	3.1145	Base profile 150	1.00 mm	150 mm	2.0 m	10 pcs	8,94 kg	400 pcs	8595136509043
TMD-1630-Z	3.1146	Base profile 160	1.00 mm	160 mm	2.0 m	10 pcs	9,42 kg	400 pcs	8595136509050
TMD-4257-Z	3.1148	Base profile 180	1.00 mm	180 mm	2.0 m	10 pcs	10,36 kg	350 pcs	8595136509067

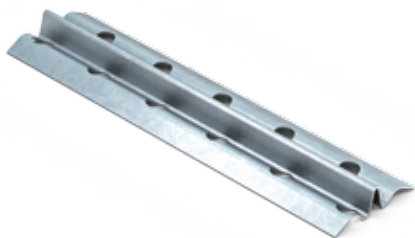
PLASTER CORNER

The profile is used for precise plastering in the areas of edges, corners, joints or indoor connections. It is made by pressing from a galvanized strip in different variants.



Order no.	Product no.	Article name	Width	Length	Bundle	Weight
TMD-3742-Z	3.2012	Plaster corner sharp 34x34mm - 3.00 m	34 x 34 mm	3.00 m	25 pcs	7,50 kg
TMD-3743-Z	3.2022	Plaster corner rounded 34x34mm - 3.00 m	34 x 34 mm	3.00 m	25 pcs	7,50 kg
TMD-3756-Z	3.2031	Plaster corner fine 32x32mm - 3.00 m	32 x 32 mm	3.00 m	25 pcs	10,87 kg

PLASTER LATH



The profile is designed for easy and quick application of internal and external plastering at the appropriate height. It is made by pressing from galvanized strip.

Order no.	Product no.	Article name	Width	Length	Bundle	Weight	Pallet
TMD-3744-Z	3.2041	Plaster lath 06 mm - 3.00 m	6 mm	3.00 m	50 pcs	13,20 kg	4 000 pcs
TMD-3745-Z	3.2043	Plaster lath 10 mm - 3.00 m	10 mm	3.00 m	25 pcs	8,77 kg	2 000 pcs
TMD-3746-Z	3.2045	Plaster lath 13 mm - 3.00 m	13 mm	3.00 m	25 pcs	9,30 kg	2 000 pcs

PLATE DOWEL TTT WITH NYLON PIN



The dowel is used as an anchoring element for fixing insulation boards in thermal insulation system. It is made from quality materials in several lengths. Installation into the structure is performed by inserting into prepared hole and hammering the plastic mandrel.

Order no.	Product no.	Article name	Diameter	Length	Load	Packing	Weight	Pallet	Bar code
TMD-0519-Z	1.348920 T	Plate dowel TTT 10/070 - nylon pin	10/60 mm	70 mm	0,20 kN	200 pcs	2,26 kg	13 200 pcs	8590108405392
TMD-0520-Z	1.348921 T	Plate dowel TTT 10/090 - nylon pin	10/60 mm	90 mm	0,20 kN	200 pcs	2,44 kg	13 200 pcs	8590108406306
TMD-0521-Z	1.348922 T	Plate dowel TTT 10/110 - nylon pin	10/60 mm	110 mm	0,20 kN	200 pcs	2,90 kg	9 600 pcs	8590108406313
TMD-2284-Z	1.348922,5 T	Plate dowel TTT 10/120 - nylon pin	10/60 mm	120 mm	0,20 kN	200 pcs	3,08 kg	9 600 pcs	8590108406320
TMD-0522-Z	1.348923 T	Plate dowel TTT 10/130 - nylon pin	10/60 mm	130 mm	0,20 kN	200 pcs	3,14 kg	9 600 pcs	8590108406337
TMD-2285-Z	1.348923,5 T	Plate dowel TTT 10/140 - nylon pin	10/60 mm	140 mm	0,20 kN	200 pcs	3,20 kg	9 600 pcs	8590108406344
TMD-0523-Z	1.348924 T	Plate dowel TTT 10/150 - nylon pin	10/60 mm	150 mm	0,20 kN	200 pcs	3,32 kg	9 600 pcs	8590108406351
TMD-2286-Z	1.348924,5 T	Plate dowel TTT 10/160 - nylon pin	10/60 mm	160 mm	0,20 kN	200 pcs	3,54 kg	6 400 pcs	8590108406368
TMD-0524-Z	1.348925 T	Plate dowel TTT 10/170 - nylon pin	10/60 mm	170 mm	0,20 kN	200 pcs	3,72 kg	6 400 pcs	8590108406375
TMD-2287-Z	1.348925,5 T	Plate dowel TTT 10/180 - nylon pin	10/60 mm	180 mm	0,20 kN	200 pcs	3,88 kg	6 400 pcs	8590108406382
TMD-0525-Z	1.348926 T	Plate dowel TTT 10/190 - nylon pin	10/60 mm	190 mm	0,20 kN	200 pcs	3,94 kg	6 400 pcs	8590108406399
TMD-2288-Z	1.348926,5 T	Plate dowel TTT 10/210 - nylon pin	10/60 mm	210 mm	0,20 kN	200 pcs	4,22 kg	6 400 pcs	8590108406405

PLATE DOWEL LTX WITH NYLON PIN



The dowel is used as an anchoring element for fixing insulation boards in thermal insulation system. It is made from quality materials in several lengths. Installation into the structure is performed by inserting into prepared hole and hammering the plastic mandrel.

Order no.	Product no.	Article name	Diameter	Length	Load	Packing	Weight	Pallet	Bar code
TMD-3450-Z	1.348928.070	Plate dowel LTX 10/070 - nylon pin	10/60 mm	70 mm	0,30 kN	200 pcs	1,54 kg	16 000 pcs	5907704471462
TMD-3451-Z	1.348928.090	Plate dowel LTX 10/090 - nylon pin	10/60 mm	90 mm	0,30 kN	200 pcs	1,90 kg	16 000 pcs	5907704471479
TMD-3452-Z	1.348928.110	Plate dowel LTX 10/110 - nylon pin	10/60 mm	110 mm	0,30 kN	200 pcs	2,18 kg	12 800 pcs	5907704471554
TMD-3453-Z	1.348928.120	Plate dowel LTX 10/120 - nylon pin	10/60 mm	120 mm	0,30 kN	200 pcs	2,20 kg	12 800 pcs	5907704471486
TMD-3454-Z	1.348928.140	Plate dowel LTX 10/140 - nylon pin	10/60 mm	140 mm	0,30 kN	200 pcs	2,36 kg	9 600 pcs	5907704471493
TMD-3455-Z	1.348928.160	Plate dowel LTX 10/160 - nylon pin	10/60 mm	160 mm	0,30 kN	200 pcs	2,54 kg	9 600 pcs	5907704471509
TMD-3456-Z	1.348928.180	Plate dowel LTX 10/180 - nylon pin	10/60 mm	180 mm	0,30 kN	200 pcs	2,74 kg	8 000 pcs	5907704471516
TMD-3457-Z	1.348928.200	Plate dowel LTX 10/200 - nylon pin	10/60 mm	200 mm	0,30 kN	200 pcs	2,96 kg	8 000 pcs	5907704471523
TMD-3458-Z	1.348928.220	Plate dowel LTX 10/220 - nylon pin	10/60 mm	220 mm	0,30 kN	100 pcs	1,58 kg	6 400 pcs	5907704471530
TMD-3622-Z	1.348928.260	Plate dowel LTX 10/260 - nylon pin	10/60 mm	260 mm	0,30 kN	100 pcs	1,70 kg	4 800 pcs	5907704471547

PLATE DOWEL LFM WITH METAL PIN

The dowel is used as an anchoring element for fixing insulation boards in thermal insulation system. It is made from quality materials in several lengths. Installation into the structure is performed by inserting into prepared hole and hammering the metal mandrel.



Order no.	Product no.	Article name	Diameter	Length	Load	Packing	Weight	Pallet	Bar code
TMD-4245-Z	1.348929.140	Plate dowel LFM 10/140 - metal pin	10/60 mm	140 mm	0,30 kN	200 pcs	8,00 kg	8 000 pcs	5907704471165
TMD-4246-Z	1.348929.160	Plate dowel LFM 10/160 - metal pin	10/60 mm	160 mm	0,30 kN	200 pcs	9,00 kg	6 400 pcs	5907704471172
TMD-4247-Z	1.348929.180	Plate dowel LFM 10/180 - metal pin	10/60 mm	180 mm	0,30 kN	200 pcs	10,00 kg	6 400 pcs	5907704471189
TMD-4248-Z	1.348929.200	Plate dowel LFM 10/200 - metal pin	10/60 mm	200 mm	0,30 kN	200 pcs	11,00 kg	6 400 pcs	5907704471196
TMD-4249-Z	1.348929.220	Plate dowel LFM 10/220 - metal pin	10/60 mm	220 mm	0,30 kN	100 pcs	6,00 kg	4 800 pcs	5907704411949
TMD-4250-Z	1.348929.260	Plate dowel LFM 10/260 - metal pin	10/60 mm	260 mm	0,30 kN	100 pcs	6,80 kg	4 000 pcs	5907704411956
TMD-4251-Z	1.348929.300	Plate dowel LFM 10/300 - metal pin	10/60 mm	300 mm	0,30 kN	100 pcs	7,20 kg	4 000 pcs	5907704411963

DOWEL DISC

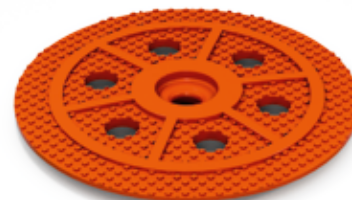
The disc is used to secure the insulation material in wood or chipboard. Plate has a special cap which prevents the creation of thermal bridges. It is made of high quality copolymers.



Order no.	Product no.	Article name	Diameter	Packing	Weight	Pallet	Bar code
TMD-1812-Z	3.1045	Dowel disc - 60 mm	60 mm	500 pcs	2,82 kg	18 000 pcs	8591502100791

DOWEL DISC TIT

The disc is used to secure the insulation material in wood or chipboard. It is made of high quality copolymers.



Order no.	Product no.	Article name	Diameter	Packing	Weight	Carton	Bar code
TMD-1813-Z	3.1046	Dowel disc - TIT 40/6	40 mm	200 pcs	0,60 kg	2 000 pcs	8590108404029
TMD-2741-Z	3.1046/60	Dowel disc - TIT 60/5	60 mm	100 pcs	0,30 kg	1 000 pcs	8590108404098

STYROFOAM CUTTER

Plastic cutter is used when installing thermal insulation systems. Cutter is made to perfectly dug a hole with precise diameter and depth same as the plug.



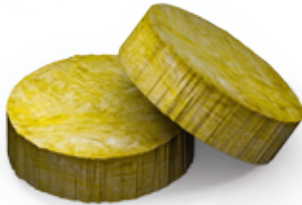
Order no.	Product no.	Article name	Diameter	Packing	Weight	Bar code
TMD-4262-Z	3.1240	Styrofoam cutter	70 mm	1 pc	0,03 kg	8034073101137



FACADE PLUG

The plug is used to cover the plate dowels in thermal insulation systems. This solution minimizes the formation of heat bridges and the subsequent delineation of anchors on the facade. Hole is formed using a plastic cutter.

Order no.	Product no.	Article name	Diameter	Height	Packing	Weight	Bar code
TMD-5027-Z	TMD-5027-Z	Facade plug 65 mm - polystyrene (white)	65 mm	15 mm	200 pcs	0,45 kg	8595136508824
TMD-4263-Z	3.1241	Facade plug 70 mm - polystyrene (white)	70 mm	15 mm	200 pcs	0,52 kg	8595136508831
TMD-4264-Z	3.1242	Facade plug 70 mm - polystyrene (grey)	70 mm	15 mm	200 pcs	0,49 kg	8595136508848



FACADE MINERAL PLUG

The plug is used to cover the plate dowels in thermal insulation systems. This solution minimizes the formation of heat bridges and the subsequent delineation of anchors on the facade. Hole is formed using a metal cutter.

Order no.	Product no.	Article name	Diameter	Height	Packing	Weight
TMD-4769-Z	TMD-4769-Z	Facade plug 70 mm - mineral wool	70 mm	15 mm	225 pcs	1,90 kg



FIBERGLASS MESH

Reinforcing fabric for use in thermal insulation system or interior applications. Glass fiber mesh due to its strength eliminates the occurrence of cracks in the structure and serves as reinforcing layer.

Order no.	Product no.	Article name	Density	Width	Length	Packing	Weight	Pallet	Bar code
TMD-1631-Z	3.1053	Fiberglass mesh 145 g	145 g/m ²	1 000 mm	50 m	50 m ²	7,25 kg	1 650 m ²	8595573513672
TMD-1626-Z	3.1051	Fiberglass mesh VERTEX R 117	145 g/m ²	1 100 mm	50 m	55 m ²	7,92 kg	1 815 m ²	8590930400282
TMD-1627-Z	3.1052	Fiberglass mesh VERTEX R 131	165 g/m ²	1 100 mm	50 m	55 m ²	8,80 kg	1 815 m ²	8590930400961



DIFFUSE FOIL

The composition of this film provides excellent water resistance during a rain and makes perfect water vapor venting from the interior of buildings. In addition the film is also famously built to protect the insulation from moisture, rain or snow when strikethrough or blowing-in under the roof covering.

Order no.	Product no.	Article name	Density	Packing	Weight	Dimension	Bar code
TMD-3762-Z	3.2221	Diffuse foil 110g	110 g/m ²	1 pc	8,96 kg	1,5 x 50 m	8595084080243

VAPOR BARRIER FOIL

The multilayer polyolefin vapor barrier with reinforced mesh gauze is made transparent or with an aluminum layer. It prevents the penetration of water vapor from the interior of the building into thermal insulation and can be used in sloped, flat roofs or vertical wall structures. It is usually used in combination with a diffuse foil.



Order no.	Product no.	Article name	Density	Packing	Weight	Dimension	Bar code
TMD-3760-Z	3.2201	Vapor barrier foil	110 g/m ²	75 m ²	6,84 kg	1,5 x 50 m	8595084080274
TMD-3761-Z	3.2211	Vapor barrier foil with AL	130 g/m ²	75 m ²	6,66 kg	1,5 x 50 m	8595084090365

OTHER PRODUCTS

PAVEMENT TARGET

Target is used for dry laying of flat tiles especially for roof structures, terraces, balconies and in order to access insulated roof cover for further use. It is particularly suitable for large areas with high traffic and it ensures continuous flow of water even in large rainstorms.



Order no.	Product no.	Article name	Packing	Weight	Carton
TMD-3802-Z	TMD-3802-Z	Rubber target under pavement	1 pc	0,07 kg	250 pcs

STRETCH FOIL

Stretch films are used for packaging individual products and fixation of pallets with moderate weight. It supplies to the products protection against mechanical damage, spillage and weathering. Dimensions and weight of the rolls are adapted for easy manual handling.



Order no.	Product no.	Article name	Grammage	Width	Packing	Weight
TMD-0316-Z	1.348616 T	Stretch foil 23 um x 500 mm	23 um	500 mm	1 pc	2,16 kg
TMD-0317-Z	1.348616.1T	Stretch foil 20 um x 100 mm	20 um	100 mm	1 pc	0,28 kg





TAMADEx spol. s r.o.

Factory:

Zbečník 19,
549 31, Hronov
Czech Republic

Žabokrký 50,
549 31, Hronov
Czech Republic

tel.: +420 491 481 797

fax: +420 491 543 016

e-mail: tamadex@tamadex.cz

