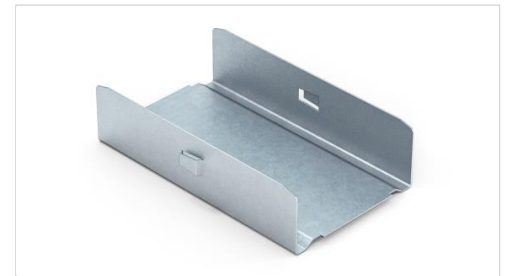


Section connector CD 60

Product description:

The connector is a metal construction element which is produced by compression molding from rolled metal zinc sheet with thickness of 0.55 mm. The product does not serve as supporting element and the strength of construction is achieved after a board mounting. The connectors are produced in different models. Stop embossments on each side are used for correct centering.



Range of usage:

The connector is used for connecting two steel profiles CD 60x27 together in assembled drywall construction. It helps to extend the grid.

Characteristics:

Material	Rolled sheet DX51
Coating	Zinc – min Z100 (ČSN EN 10327)
Thickness	0.80 mm / 1.00 mm (ČSN EN 10143)
Reaction to fire	Class A1 (EN 14195)
Durability	Class B
Hazardous substance	NPD

Product variability:

Code	Name	Load	Pack	Weight
TMD-0145 (1.348122.1 T)	Section connector CD 60 - 80 mm	-	100 pcs	0,0375 kg
TMD-0144 (1.348122 T)	Section connector CD 60 - 100 mm	-	100 pcs	0,0437 kg

Real weight may vary in range of +/-5% according to ČSN EN10143

Mounting:

Press the connector and slide it into a first, already mounted steel profile CD 60x27 as far as the side stoppers. Plug in the second profile onto the other side of the connector and push together with the first one. In order not to disturb the structural strength all the adjacent profiles should be jointed together in different place of the grid.

Packaging:

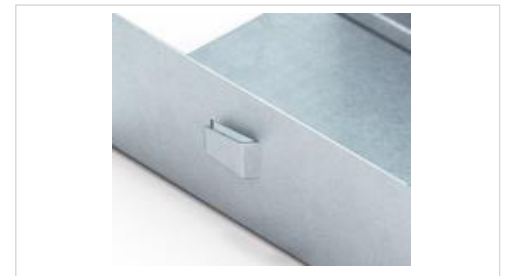
The connectors are packed by 100 pcs in carton box which is labeled with identification tag. Blister packing consists of 15 pcs in transparent plastic casing covered by cardboard plate with a description of the product.



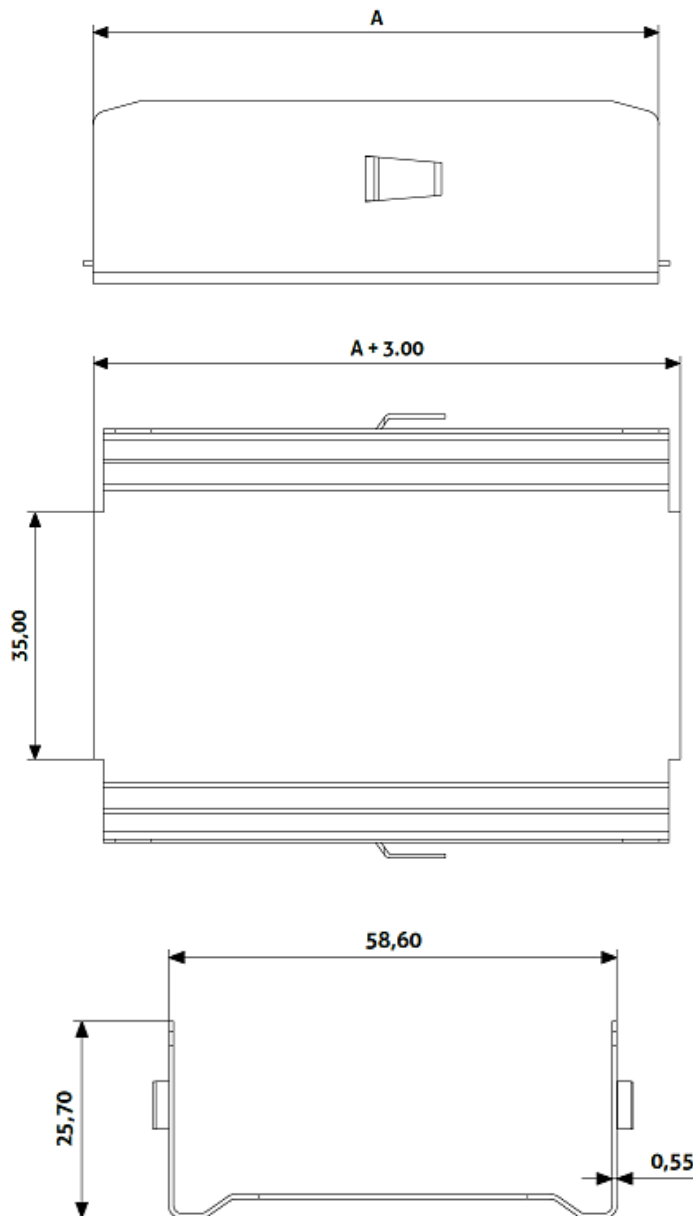
Section connector CD 60

Recommended storage:

The product is required to store in dry and temperate environment in order to prevent condensation on the surface of the product and damage to the packaging.



Technical drawing:



Kód	Produkt	A	Váha
TMD-0145	Spojka CD 60/27 - 080 mm	80 mm	0,0375 kg
TMD-0144	Spojka CD 60/27 - 100 mm	100 mm	0,0437 kg

