

Cross connector BA/BS

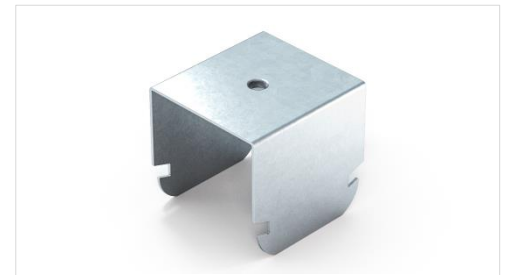
Product description:

The cross connector is used for mounting the two-level cross grid created from drywall steel profiles BA 50 or BS 50. It is produced by compression molding of the rolled galvanized steel sheet with a thickness of 1.00 mm in variant with a hole of 6 mm or a thread M6. To simplify the work it is supplied already in a bent state and it is secured by snapping into the profile.



Range of usage:

The product is used for cross connection of metal profiles into horizontal construction of the buildings.



Characteristics:

Material	Rolled sheet DX51
Coating	Zinc – min Z100 (ČSN EN 10327)
Thickness	1.00 mm (ČSN EN 10143)
Reaction to fire	Class A1 (EN 14195)
Durability	Class B
Hazardous substance	NPD

Product variability:

Code	Name	Load	Pack	Weight
TMD-4439 (1.348213D BA50)	Cross connector BA 50/27	0,80 kN	100 pcs	0,0464 kg
TMD-4441 (1.348213M BA50)	Cross connector BA 50/27 (thread M6)	0.80 kN	100 pcs	0,0464 kg
TMD-4440 (1.348213D BS50)	Cross connector BS 50/27	0.80 kN	100 pcs	0,0464 kg
TMD-4442 (1.348213M BS50)	Cross connector BS 50/27 (thread M6)	0.80 kN	100 pcs	0,0464 kg

Real weight may vary in range of +/-5% according to ČSN EN10143

Mounting:

The connector is anchored by fitting over top profile and then pushing it into the bottom profile until it clicks.

Packaging:

The connectors are packed by 100 pcs in carton box. Every dimension is labeled with identification tag.



Cross connector BA/BS

Recommended storage:

The product is required to store in dry and temperate environment in order to prevent condensation on the surface of the product and damage to the packaging.

Technical drawing:

