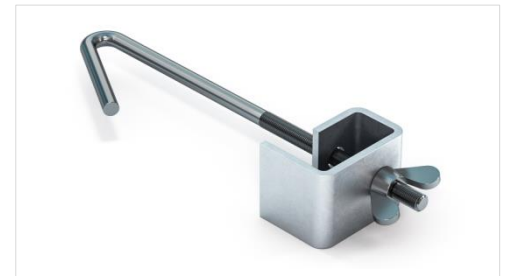


# Beam clamps

## Product description:

The element is used for mounting drywall steel profiles onto a steel construction of the building in horizontal systems. It is produced by compression molding from rolled metal zinc sheet with thickness of 2.00 mm and threaded rod. The installation is done by clamping onto steel beam and mounting suspension wire with eyelet. The straight end of suspension wire can be used for sliding in the butterfly double clip or spring hanger brackets. The clamps are produced in three different sizes for beams with width of 50-210 mm..



## Range of usage:

The product is used for metal profiles mounting into steel construction of the buildings in a horizontal system.

## Characteristics:

<b>Material</b>	Rolled sheet DX51 + threaded rod
<b>Coating</b>	Zinc – min Z100 (ČSN EN 10327)
<b>Thickness</b>	2.00 mm + 4.00 mm (ČSN EN 10143)
<b>Reaction to fire</b>	Class A1 (EN 14195)
<b>Durability</b>	Class B
<b>Hazardous substance</b>	NPD

## Product variability:

Code	Name	Load	Pack	Weight
TMD-0177 (1.348148 T)	Beam clamp 050-085 mm	0,50 kN	100 pcs	0,0400 kg
TMD-0178 (1.348149 T)	Beam clamp 085-130 mm	0,50 kN	100 pcs	0,0480 kg
TMD-0179 (1.348150 T)	Beam clamp 130-210 mm	0,50 kN	100 pcs	0,0600 kg

Real weight may vary in range of +/-5% according to ČSN EN10143

## Mounting:

The assembly is carried out by clamping on the steel beam and fixing the suspension wire with the eye of the required length (the eye of the suspended wire is attached to the wing nut). Subsequent attachment of the quick-hanger to the suspended wire allows precise alignment of the final structure.

## Packaging:

The clamps are packed by 100 pcs in carton box. Every dimension is labeled with identification tag.

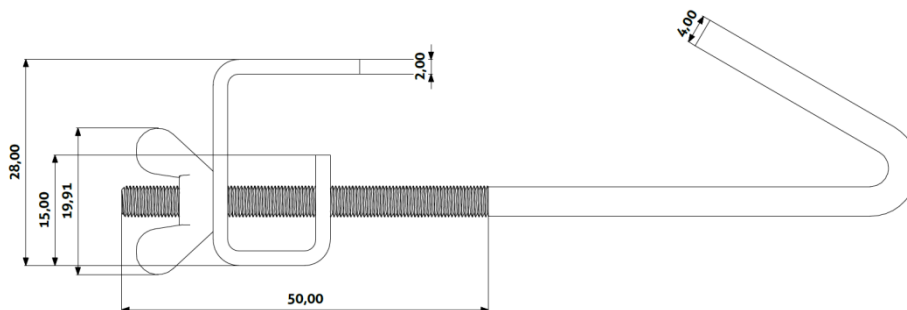
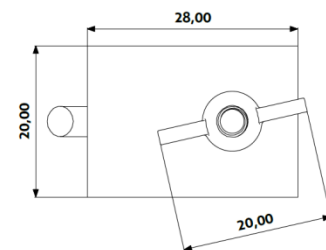
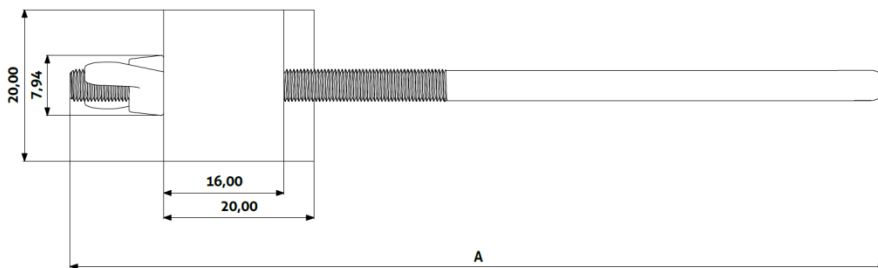
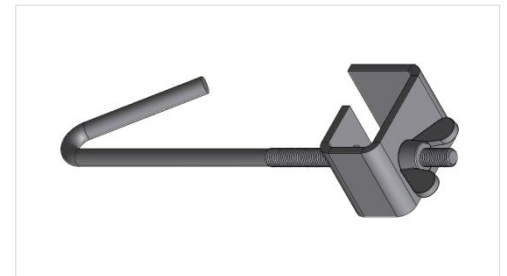


# Beam clamps

## Recommended storage:

The product is required to store in dry and temperate environment in order to prevent condensation on the surface of the product and damage to the packaging.

## Technical drawing:



Code	Název	Dimension A
TMD-0177	Beam clamp 050-085 mm	90 mm
TMD-0178	Beam clamp 085-130 mm	150 mm
TMD-0179	Beam clamp 130-210 mm	245 mm

